



Improvement Area A of Community Facilities District No. 15

Annual Special Tax Report

Fiscal Year Ending June 30, 2025

Poway Unified School District

2025 / 2026



A division of California Financial Services

School District

Poway Unified School District
15250 Avenue of Science
San Diego, CA 92128
T. (858) 521-2800

Fiscal Agent

Zion Bancorporation, National Association
707 Wilshire Boulevard, Suite 5000
Los Angeles, CA 90017
T. (213) 593-3152

Special Tax Administrator

KeyAnalytics
27201 Puerta Real, Suite 260
Mission Viejo, CA 92691
T. (949) 282-1077

Special Assessment Questions
T. (877) 575-0265
taxinfo@calschools.com

Bond Counsel

Chapman & Cutler, LLP
595 Market Street
San Francisco, CA 94105

Table of Contents

Introduction	1
I. CFD Background	3
A. Location	3
B. Formation	3
C. Bonds	4
II. Fiscal Year 2024/2025 Special Tax Levy	6
A. Special Tax Levy	6
B. Special Tax Collections and Delinquencies	7
III. Fund and Account Activity and Balances	8
A. Fiscal Agent Accounts	8
B. Sources and Uses of Funds	10
IV. Senate Bill 165	11
A. Authorized Facilities	11
B. 2014 Special Tax Bonds	15
C. Special Tax Refunding Bonds, Series 2022	16
D. Special Taxes	17
V. Minimum Annual Special Tax Requirement	19
A. Minimum Annual Special Tax Requirement	19
B. Administrative Expense Budget	20
VI. Special Tax Classification	21
A. Developed Property	21
VII. Fiscal Year 2025/2026 Special Tax Levy	22

Exhibit A – Rate and Method of Apportionment

Exhibit B – CFD Boundary Map

Exhibit C – Assessor's Parcel Maps

Exhibit D – Special Tax Refunding Bonds, Series 2022 Debt Service Schedule

Exhibit E – Delinquent Annual Special Tax Report

Exhibit F – Summary of Transactions for Fiscal Agent Accounts

Exhibit G – Annual Special Tax Roll for Fiscal Year 2025/2026

Introduction

Improvement Area (“IA”) A of Community Facilities District (“CFD”) No. 15 of the Poway Unified School District (the “School District”) was formed pursuant to the terms and provisions of the “Mello-Roos Community Facilities Act of 1982”, as amended (the “Act”), being Chapter 2.5, Part 1, Division 2, Title 5 of the Government Code of the State of California. IA A of CFD No. 15 is authorized under the Act to finance certain facilities (the “Authorized Facilities”) as established at the time of formation.

This Annual Special Tax Report (the “Report”) summarizes certain general and administrative information and analyzes the financial obligations of IA A of CFD No. 15 for the purpose of establishing the Annual Special Tax Levy for Fiscal Year 2025/2026. The Annual Special Tax Levy is calculated pursuant to the Rate and Method of Apportionment (the “RMA”) which is attached to this Report as Exhibit A.

All capitalized terms not defined herein are used as defined in the RMA and/or Bond Indenture, dated June 1, 2022, between the School District and Zion Bancorporation, National Association acting as Fiscal Agent (the “Fiscal Agent”).

This Report is organized into the following Sections:

Section I – CFD Background

Section I provides background information relating to the formation of IA A of CFD No. 15 and the long-term obligations issued to finance the Authorized Facilities.

Section II – Fiscal Year 2024/2025 Special Tax Levy

Section II provides information regarding the levy and collection of Special Taxes for Fiscal Year 2024/2025 and an accounting of the remaining collections.

Section III – Fund and Account Balances

Section III examines the financial activity within the funds and accounts associated with IA A of CFD No. 15.

Section IV – Senate Bill 165

Section IV provides information required under Senate Bill 165 regarding the initial allocation of bond proceeds and the expenditure of the Annual Special Taxes and bond proceeds utilized to fund the Authorized Facilities of IA A of CFD No. 15 for Fiscal Year 2024/2025.

Section V – Minimum Annual Special Tax Requirement

Section V calculates the Minimum Annual Special Tax Requirement based on the obligations of IA A of CFD No. 15 for Fiscal Year 2025/2026.

Section VI – Special Tax Classification

Section VI provides updated information regarding the Special Tax classification of parcels within IA A of CFD No. 15.

Section VII – Fiscal Year 2025/2026 Special Tax Levy

Section VII provides the Fiscal Year 2025/2026 Special Tax levy based on updated Special Tax classifications and the Minimum Annual Special Tax Requirement.

I. CFD Background

This Section provides background information regarding the formation of IA A of CFD No. 15 and the bonds issued to fund the Authorized Facilities.

A. Location

CFD No. 15 is located at the northerly end of the City of San Diego and west of Interstate 15, approximately 2.5 miles west of Interstate 15, 8 miles inland from the Pacific Ocean, and 20 miles north of downtown San Diego. CFD No. 15 is contiguous and is generally located south of Camino Del Sur and west of 4S Ranch Parkway. IA A of CFD No. 15 is located within CFD No. 15 in the east central part of Del Sur. For reference, the boundary map of IA A of CFD No. 15 is included as Exhibit B and the current Assessor's Parcel maps are included as Exhibit C.

B. Formation

CFD No. 15 was formed and established by the School District on December 17, 2012, under the Act, following a public hearing conducted by the Board of Education of the School District (the "Board"), as legislative body of CFD No. 15, and a landowner election at which the qualified electors of CFD No. 15 authorized IA A of CFD No. 15 to incur bonded indebtedness in an amount not to exceed \$10,000,000 and approved the levy of Annual Special Taxes.

CFD No. 15 was formed pursuant to a Second Supplement to Subarea I Black Mountain Ranch Phase II School Impact Mitigation Agreement ("Mitigation Agreement") dated November 1, 2012, by and between the School District and Black Mountain Ranch LLC ("Owner"), which supplements the Subarea I Black Mountain Ranch Phase II School Impact Mitigation Agreement, dated as of July 1, 1998, by and between the School District and Black Mountain Ranch Limited Partnership ("BMR LP"), as amended by a First Amendment to Subarea I Black Mountain Ranch Phase II School Impact Mitigation Agreement, dated January 1, 2006, by and between the School District and BMR LP. Additionally, IA A of CFD No. 15 was formed pursuant to the Joint

Community Facilities Agreement, by and among the School District, the City of San Diego, and Black Mountain Ranch, LLC, dated September 10, 2013.

The table below provides information related to the formation of CFD No. 15.

**Board Actions Related to
Formation of CFD No. 15**

Resolution	Board Meeting Date	Resolution No.
Resolution of Intention	November 13, 2012	18-2013
Resolution to Incur Bonded Indebtedness	November 13, 2012	19-2013
Resolution of Formation	December 17, 2012	30-2013
Ordinance Levying Special Taxes	January 22, 2013	2013-1

A Notice of Special Tax Lien was recorded in the real property records of the County on December 27, 2012, on all property within IA A of CFD No. 15 as Document No. 2012-0818722.

C. Bonds

1. 2014 Special Tax Bonds

On August 21, 2014, the 2014 Special Tax Bonds (“2014 Bonds”) of the School District were issued in the amount of \$10,000,000. The 2014 Bonds were issued under and subject to the terms of the Bond Indenture dated July 1, 2014 (“2014 Indenture”), and the Act. The proceeds of the 2014 Bonds were used to (i) finance, either directly or indirectly, the acquisition and construction of certain infrastructure improvements of benefit to IA A of CFD No. 15 (“Infrastructure Improvements”), (ii) deposit money into an Escrow Fund which may be released to finance, either directly or indirectly, the acquisition and construction of Infrastructure Improvements upon satisfaction of certain conditions, (iii) pay capitalized interest on a portion of the 2014 Bonds through March 1, 2016, (iv) pay

the costs of issuing the 2014 Bonds, and (v) fund the deposit to the Reserve Fund to the Reserve Requirement applicable to the 2014 Bonds.

2. Special Tax Refunding Bonds, Series 2022

On June 6, 2022, the Special Tax Refunding Bond, Series 2022 (“2022 Bonds”, collectively with the 2014 Bonds, “Bonds”) of the School District were issued in the amount of \$8,495,000. The 2022 Bonds were issued under and subject to the terms of the Bond Indenture dated June 1, 2022 (“2022 Indenture”), and the Act. The 2022 Bonds were used to defease and refund the 2014 Bonds, fund the Reserve Fund, and pay the Costs of Issuance of the 2022 Bonds. For more information regarding the use of the 2022 Bonds proceeds, please refer to Section IV of this Report.

A copy of the debt service schedule of the 2022 Bonds is included as Exhibit D.

II. Fiscal Year 2024/2025 Special Tax Levy

Each Fiscal Year, IA A of CFD No. 15 levies and collects Special Taxes pursuant to the RMA in order to meet the obligation for that Fiscal Year. This Section provides a summary of the levy and collection of Special Taxes in Fiscal Year 2024/2025.

A. Special Tax Levy

The Special Tax levy for Fiscal Year 2024/2025 is summarized by Special Tax classification in the table below.

**Fiscal Year 2024/2025
Annual Special Tax Levy**

Land Use	Tax Class	Sq. Footage	Number of Units	Assigned Annual Special Tax Rate	Total Assigned Annual Special Taxes
Detached Unit	1	≤ 1,550 Sq. Ft.	0 Units	\$2,421.54 per Unit	\$0.00
Detached Unit	2	1,551 Sq. Ft. to 1,750 Sq. Ft.	0 Units	\$2,550.52 per Unit	0.00
Detached Unit	3	1,751 Sq. Ft. to 1,950 Sq. Ft.	21 Units	\$2,650.20 per Unit	55,654.20
Detached Unit	4	1,951 Sq. Ft. to 2,150 Sq. Ft.	0 Units	\$2,949.24 per Unit	0.00
Detached Unit	5	2,151 Sq. Ft. to 2,350 Sq. Ft.	18 Units	\$3,078.22 per Unit	55,407.96
Detached Unit	6	2,351 Sq. Ft. to 2,550 Sq. Ft.	39 Units	\$3,301.04 per Unit	128,740.56
Detached Unit	7	2,551 Sq. Ft. to 2,750 Sq. Ft.	32 Units	\$3,570.76 per Unit	114,264.32
Detached Unit	8	2,751 Sq. Ft. to 2,950 Sq. Ft.	37 Units	\$3,699.74 per Unit	136,890.38
Detached Unit	9	2,951 Sq. Ft. to 3,150 Sq. Ft.	17 Units	\$3,899.10 per Unit	66,284.70
Detached Unit	10	3,151 Sq. Ft. to 3,350 Sq. Ft.	0 Units	\$4,045.68 per Unit	0.00
Detached Unit	11	3,351 Sq. Ft. to 3,550 Sq. Ft.	0 Units	\$4,121.90 per Unit	0.00
Detached Unit	12	3,551 Sq. Ft. to 3,750 Sq. Ft.	0 Units	\$4,262.62 per Unit	0.00
Detached Unit	13	3,750 Sq. Ft. to 3,950 Sq. Ft.	0 Units	\$4,374.02 per Unit	0.00
Detached Unit	14	3,951 Sq. Ft. to 4,150 Sq. Ft.	0 Units	\$4,561.66 per Unit	0.00
Detached Unit	15	> 4,150 Sq. Ft.	0 Units	\$4,749.28 per Unit	0.00
Attached Unit	16	≤ 1,200 Sq. Ft.	0 Units	\$2,005.24 per Unit	0.00
Attached Unit	17	1,201 Sq. Ft. to 1,350 Sq. Ft.	0 Units	\$2,157.68 per Unit	0.00
Attached Unit	18	1,351 Sq. Ft. to 1,500 Sq. Ft.	0 Units	\$2,269.10 per Unit	0.00
Attached Unit	19	1,501 Sq. Ft. to 1,650 Sq. Ft.	27 Units	\$2,421.54 per Unit	65,381.58
Attached Unit	20	1,651 Sq. Ft. to 1,800 Sq. Ft.	2 Units	\$2,547.60 per Unit	5,095.20
Attached Unit	21	> 1,800 Sq. Ft.	16 Units	\$2,650.20 per Unit	42,403.20
Affordable Unit	22	NA	0 Units	\$0.00 per Unit	0.00
Senior Citizen Unit	23	≤ 1,400 Sq. Ft.	0 Units	\$2,431.90 per Unit	0.00
Senior Citizen Unit	24	1,401 Sq. Ft. to 1,800 Sq. Ft.	0 Units	\$2,676.62 per Unit	0.00
Senior Citizen Unit	25	1,801 Sq. Ft. to 2,200 Sq. Ft.	0 Units	\$3,124.24 per Unit	0.00
Senior Citizen Unit	26	> 2,200 Sq. Ft.	0 Units	\$3,637.52 per Unit	0.00
Developed Property			209 Units	NA	\$670,122.10
Undeveloped Property			0.00 Acres	\$0.00 per Acre	\$0.00
Total			209 Units		\$670,122.10

B. Special Tax Collections and Delinquencies

Delinquent Annual Special Taxes for IA A of CFD No. 15, as of June 30, 2025, for Fiscal Year 2024/2025 is summarized in the table below. Based on the Foreclosure Covenant outlined in the 2022 Bond Indenture and the current delinquency rates, no parcel exceeds the foreclosure threshold. A detailed listing of the Fiscal Year 2024/2025 Delinquent Annual Special Taxes, based on the year end collections and information regarding the Foreclosure Covenant is provided as Exhibit E.

IA A of CFD No. 15 Special Tax Collections and Delinquencies

Fiscal Year	Subject Fiscal Year					June 30, 2025	
	Aggregate Special Tax	Parcels Delinquent ^[1]	Amount Collected	Amount Delinquent	Delinquency Rate	Remaining Amount Delinquent	Remaining Delinquency Rate
2020/2021	\$619,087.00	N/A	\$600,451.00	\$18,636.00	3.01%	\$0.00	0.00%
2021/2022	631,468.00	N/A	618,545.00	12,923.00	2.05%	0.00	0.00%
2022/2023	644,096.04	2	639,658.05	4,437.99	0.69%	0.00	0.00%
2023/2024	656,983.06	0	656,983.06	0.00	0.00%	0.00	0.00%
2024/2025	670,122.10	3	661,687.74	8,434.36	1.26%	8,434.36	1.26%

[1] Information not provided by previous administrator for Fiscal Years 2020/2021 through 2021/2022.

III. Fund and Account Activity and Balances

Special Taxes are collected by the County Tax Collector as part of the regular property tax bills. Once received by the County Tax Collector the Special Taxes are transferred to the School District where they are then deposited into the Special Tax Fund held with the Fiscal Agent. Special Taxes are periodically transferred to make debt service payments on the 2022 Bonds and pay other authorized costs. This Section summarizes the account activity and balances of the funds and accounts associated with IA A of CFD No. 15.

A. Fiscal Agent Accounts

Funds and accounts associated with the Bonds are currently being held by the Fiscal Agent. These funds and accounts were established pursuant to the 2022 Bond Indenture.

The balances, as of June 30, 2025, of the funds, accounts and subaccounts by the Fiscal Agent are listed in the table on the following page. Exhibit F contains a detailed listing of the transactions within these funds for Fiscal Year 2024/2025.

**Fund and Account Balances
as of June 30, 2025**

Account Name	Account Number	Balance
2014 Special Tax Fund	7150907A	\$0.00
2014 Interest Account	7150907B	0.00
2014 Principal Account	7150907C	0.00
2014 Reserve Fund	7150907D	0.00
2014 Administrative Expense Fund	7150907I	0.00
2014 Redemption Fund	7150907R	0.00
2022 Special Tax Fund	7150950A	949,516.76
2022 Interest Account	7150950B	1,495.09
2022 Principal Account	7150950C	0.00
2022 Reserve Fund	7150950D	68,781.20
2022 Administrative Expense Fund	7150950I	43,988.28
2022 Cost of Issuance Fund	7150950J	0.00
Escrow Fund	7150951Z	0.00
Total		\$1,063,781.33

B. Sources and Uses of Funds

The sources and uses of funds collected and expended by IA A of CFD No. 15 are limited based on the restrictions as described within the 2022 Bond Indenture. The table below presents the sources and uses of all funds and accounts for IA A of CFD No. 15 from July 1, 2024, through June 30, 2025. For a more detailed description of the sources and uses of funds please refer to Section III of the 2022 Indenture.

Fiscal Year 2024/2025 Sources and Uses of Funds

Sources	
Bond Proceeds	\$0.00
Annual Special Tax Receipts	661,179.22
Investment Earnings	34,732.12
Total	\$695,911.34
Uses	
Interest Payments	(\$261,396.00)
Principal Payments	(190,000.00)
Authorized Facilities	0.00
Administrative Expenses	(46,450.00)
Total	(\$497,846.00)

IV. Senate Bill 165

Senate Bill 165, or the Local Agency Special Tax and Bond Accountability Act (“SB 165”), requires any local special tax/local bond measure subject to voter approval contain a statement indicating the specific purposes of the Special Tax, require that the proceeds of the Special Tax be applied to those purposes, require the creation of an account into which the proceeds shall be deposited, and require an annual report containing specified information concerning the use of the proceeds. SB 165 only applies to CFDs authorized on or after January 1, 2001, in accordance with Sections 50075.1 and 53410 of the California Government Code.

A. Authorized Facilities

Pursuant to the Mello-Roos Community Facilities Act of 1982, as Amended (“Act”), CFD No. 15 can only be used to fund the “Authorized Facilities” as outlined at the time of formation. The following is an excerpt which describes the Authorized Facilities of CFD No. 15:

School Facilities - School Facilities shall include acquisition, planning, construction and/or financing of those school facilities, including classrooms, multi-purpose, administration and auxiliary space at each school, central support and administrative facilities, interim housing, transportation and special education facilities, together with furniture, equipment, and technology, needed by School District in order to serve directly or indirectly the student population to be generated as a result of the development of the property within the CFD No. 15, together with all land or interests in land required for the construction of such facilities and all land or interests in land required to be provided by the School District as mitigation of environmental impacts associated with the development of such school facilities as well as all that portion of the related incidental expenses and the costs to the School District related to the negotiation, execution and implementation of the Mitigation Agreement. School Facilities shall also mean the acquisition, planning, construction, and/or financing of other additional school facilities including classrooms, multi-purpose, administration, and

auxiliary space at each school, central support and administrative facilities, interim housing, transportation, and special education facilities, together with furniture, equipment, and technology needed by the School District to serve the student population of the School District and which are financed in whole or in part from the revenues of special taxes levied in any fiscal year on Developed Property within any Improvement Area in excess of that required to satisfy the Minimum Annual Special Tax Requirements for such Improvement Area for such fiscal year provided that: (a) all of the Taxable Property in such Improvement Area is Developed Property; (b) Improvement Area Bonds have been issued in the Maximum principal amount authorized to be issued for such Improvement Area and Owner and the School District have agreed to additional Improvement Area Bonds shall be issued for such Improvement Area; and (c) such Improvement Area has funded the Purchase Price of City Improvements from all moneys deposited in the improvement Fund established pursuant to the Indenture related to each Series of Improvement Area Bonds issued for such Improvement Area.

The School facilities shall also include the attributable costs of engineering, design, planning, materials testing, coordination, construction staking, and construction, together with the expenses related to the issuance and sale of any debt as defined in Section 53317(d) of the Act, including but not limited to, underwriters' discount, appraisals, market studies, reserve fund, capitalized interest, bond counsel, special tax consultant, bond and official statement printing, administrative expenses of the School District, CFD No. 15, and bond trustee or fiscal agent related to the CFD No. 15 and any such debt and all the other incidental expenses.

The School Facilities shall be constructed, whether or not acquired in their completed states, pursuant to plans and specifications approved by the School District. The School Facilities listed are representative of all types of improvements authorized to be financed by CFD No. 15.

Detailed scope and limits of specific projects will be determined as appropriate, consistent with the standards of the School District. Addition, deletion, or modification of descriptions of School Facilities may be made consistent with the requirements of the Board of Education of the School District, CFD No. 15, and the Act.

City Improvements - City Improvements shall include the acquisition, planning, construction and/or financing of those improvements to be owned by the City of San Diego (the “City”), including the following:

- A. Transportation Improvements.
- B. Park Improvements.
- C. Fire Station Improvements.
- D. Library Improvements.
- E. Water/Sewer Improvements.
- F. City Approved Construction Plans and Drawings for Camino Del Sur paid for by Owner.
- G. Non – FBA Streets and Arterials to Support School Facilities.

The City Improvements shall also include the attributable costs of right of way acquisition, grading and site preparation, slope and erosion control, sanitary sewers, storm drainage, water distribution facilities, traffic signals, street lighting, street paving, curb, gutter, sidewalk, median landscaping, dry utilities, engineering, design, planning, materials testing, coordination, construction staking and construction, construction management and supervision together with the expenses related to the issuance and sale of any debt as defined in Section 53317(d) of the Act including, but not limited to, underwriters’ discount, appraisals, market studies, reserve fund, capitalized interest, bond counsel, special tax consultant, bond and official statement printing, administrative expenses of the School District allocated to the City Improvements, CFD No. 15 and bond trustee or fiscal agent related to IA A of CFD No. 15 and any such debt and all other incidental expenses.

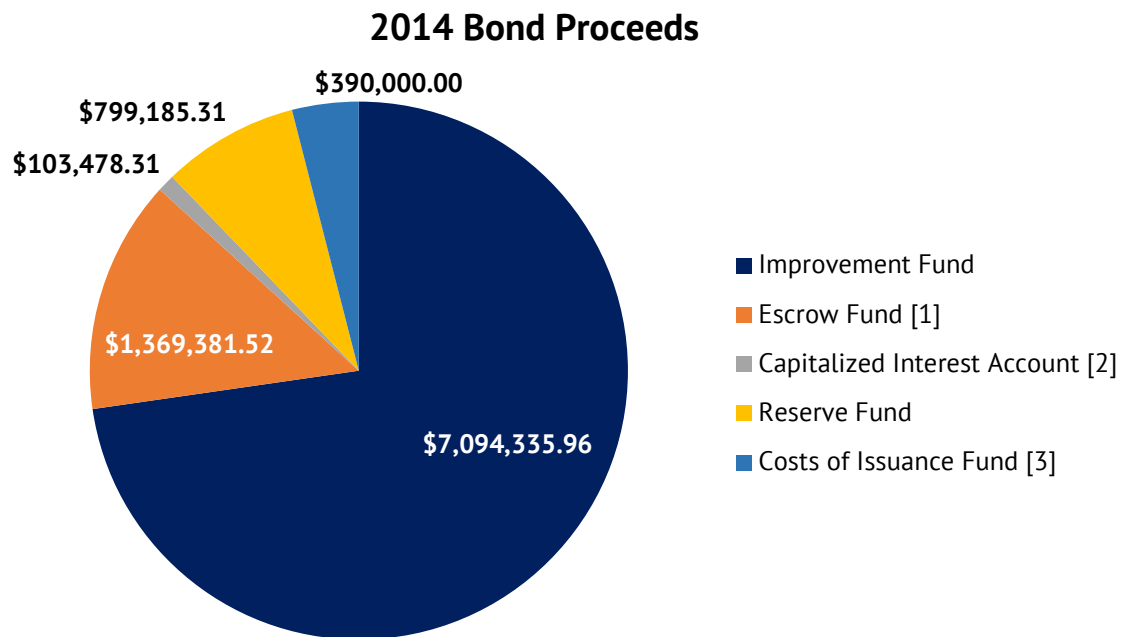
The City Improvements shall be constructed, whether or not acquired in their completed states, pursuant to plans and specifications approved by the City of San Diego.

The City Improvements listed are representative of the types of improvements that are to be owned, operated, and maintained by the City of San Diego and to be financed by CFD No. 15. Detailed scope and limits of specific projects will be determined as appropriate, consistent with the standards of the City of San Diego. Addition, deletion, or modification of descriptions of the City Improvements may be made consistent with the requirements of the City of San Diego subject to the approval by the Board of Education of the School District, CFD No. 15, and the Act.

B. 2014 Special Tax Bonds

1. Bond Proceeds

In accordance with the 2014 Indenture by and between IA A of CFD No. 15 and the Fiscal Agent, the proceeds of the 2014 Bonds were deposited in the amount \$10,000,000, less \$243,618.90 in Original Issue Discount, into the funds and accounts shown in the graph below.



[1] Funds released for Improvement Facilities after certain conditions are met.

[2] Capitalized Interest through March 1, 2016.

[3] Costs of Issuance includes Underwriter's Discount, Bond Counsel fees, Disclosure Counsel fees, Special Tax Consultant fees, Municipal Advisor fees, Trustee fees, Printing Costs, and other issuance costs. The actual amount deposited into the Costs of Issuance Fund was \$230,000.00.

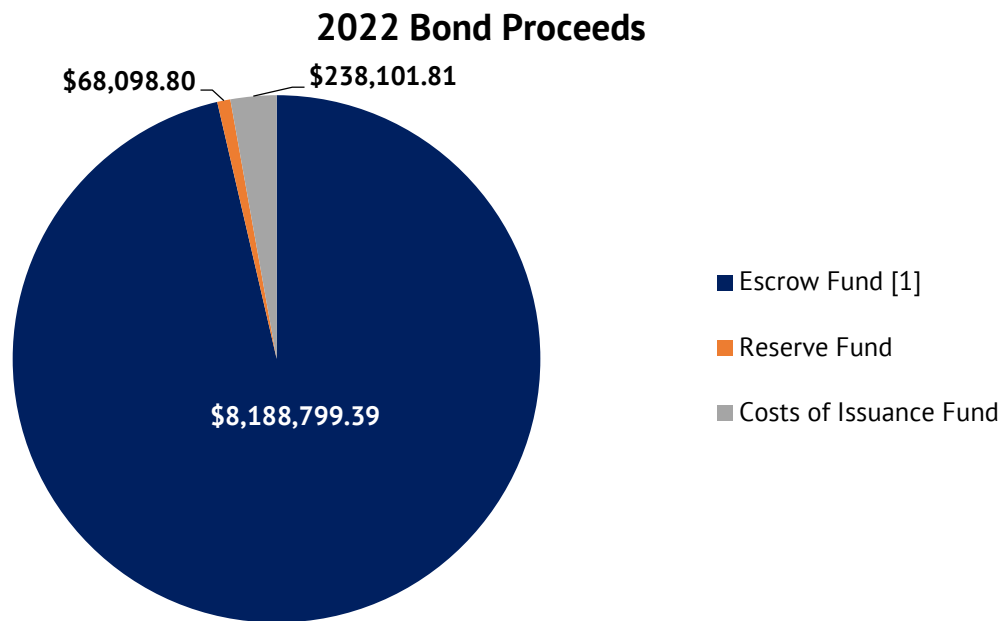
2. Construction Funds and Accounts

All construction funds generated from the issuance of the 2014 Bonds for Authorized Facilities have been expended on the Authorized Facilities of IA A of CFD No. 15 and all construction accounts have been closed. For information on the expenditures of these accounts, please refer to prior years' Reports.

C. Special Tax Refunding Bonds, Series 2022

1. Bond Proceeds

In accordance with the 2022 Indenture by and between IA A of CFD No. 15 and the Fiscal Agent, the proceeds of the 2022 Bonds were deposited in the amount \$8,495,000 into the funds and accounts shown in the graph below.



[1] Funds used to redeem the 2014 Bonds on September 1, 2022.

D. Special Taxes

IA A of CFD No. 15 has covenanted to levy the Special Taxes in accordance with the RMA. The Special Taxes collected can only be used for the purposes as outlined in the 2014 Bond Indenture. The table below presents a detailed accounting of the Special Taxes collected and expended by IA A of CFD No. 15 within the 2014 Special Tax Fund created under the 2014 Indenture.

2014 Special Tax Fund

Balance as of July 1, 2024		\$48.78
Accruals		\$0.69
Investment Earnings	\$0.69	
Expenditures		(\$49.47)
Transfer to the 2022 Special Tax Fund	(\$49.47)	
Balance as of June 30, 2025		\$0.00

IA A of CFD No. 15 has covenanted to levy the Special Taxes in accordance with the RMA. The Special Taxes collected can only be used for the purposes as outlined in the 2022 Bond Indenture. The table below presents a detailed accounting of the Special Taxes collected and expended by IA A of CFD No. 15 within the 2022 Special Tax Fund created under the 2022 Indenture.

2022 Special Tax Fund

Balance as of July 1, 2024		\$730,654.06
Accruals		\$690,309.54
Special Tax Deposits	\$661,179.22	
Investment Earnings	29,080.85	
Transfer from the 2014 Special Tax Fund	49.47	
Expenditures		(\$471,446.84)
Transfer to the Administrative Expense Fund	(\$23,779.54)	
Transfer to the Interest Account	(257,667.30)	
Transfer to the Principal Account	(190,000.00)	
Balance as of June 30, 2025		\$949,516.76

The table below presents a detailed listing of the Annual Special Taxes collected and expended within the IA A of CFD No. 15 Custodial Account

IA A of CFD No. 15 Custodial Account

Balance as of July 1, 2024		\$4,556.94
Accruals		\$203.82
Investment Earnings	\$203.82	
Expenditures		\$0.00
Balance as of June 30, 2025		\$4,760.76

V. Minimum Annual Special Tax Requirement

This Section outlines the calculation of the Minimum Annual Special Tax Requirement of IA A of CFD No. 15 based on the financial obligations for Fiscal Year 2025/2026.

A. Minimum Annual Special Tax Requirement

The Annual Special Taxes of IA A of CFD No. 15 are calculated in accordance and pursuant to the RMA. Pursuant to the 2022 Indenture, any amounts not required to pay Administrative Expenses and Debt Service on the Bonds may be used to purchase/construct the Authorized Facilities of IA A of CFD No. 15. The table below shows the calculation of the Minimum Annual Special Tax Requirement for Fiscal Year 2025/2026.

Minimum Annual Special Tax Requirement for IA A of CFD No. 15

Fiscal Year 2024/2025 Remaining Sources		\$954,280.09
Balance of Special Tax Fund	\$949,516.76	
Balance of Interest Fund	1,495.09	
Balance of Principal Fund	0.00	
Anticipated Special Taxes	3,268.24	
Fiscal Year 2024/2025 Remaining Obligations		(\$954,280.09)
September 1, 2025 Interest Payment	(\$129,187.50)	
September 1, 2025 Principal Payment	(210,000.00)	
Direct Construction of Authorized Facilities	(615,092.59)	
Fiscal Year 2024/2025 Surplus (Reserve Fund Draw)		\$0.00
Fiscal Year 2025/2026 Obligations		(\$683,524.74)
Administrative Expense Budget	(\$24,254.97)	
Anticipated Special Tax Delinquencies ^[1]	(8,603.05)	
March 1, 2026 Interest Payment	(125,848.50)	
September 1, 2026 Interest Payment	(125,848.50)	
September 1, 2026 Principal Payment	(220,000.00)	
Direct Construction of Authorized Facilities	(178,969.72)	
Fiscal Year 2025/2026 Minimum Annual Special Tax Requirement		\$683,524.74

[1] Assumes the Fiscal Year 2024/2025 Year End delinquency rate of 1.26%.

B. Administrative Expense Budget

Each year a portion of the Annual Special Tax levy is used to pay for the administrative expenses incurred by the School District to levy the Annual Special Tax and administer the debt issued to finance Authorized Facilities. The estimated Fiscal Year 2025/2026 Administrative Expenses are shown in the table below.

**Fiscal Year 2025/2026 Budgeted
Administrative Expenses**

Administrative Expense	Budget
District Staff and Expenses	\$10,234.07
Consultant/Trustee Expenses	9,000.00
County Tax Collection Fees	20.90
Contingency for Legal	5,000.00
Total Expenses	\$24,254.97

VI. Special Tax Classification

Each Fiscal Year, parcels within IA A of CFD No. 15 are assigned a Special Tax classification based on the parameters outlined in the RMA. This Section outlines how parcels are classified and the amount of Taxable Property within IA A of CFD No. 15.

A. Developed Property

Pursuant to the RMA, a parcel is considered to be classified as Developed Property once a Building Permit is issued on or prior to May 1st of the prior Fiscal Year. Building Permits have been issued for 209 Units by the City within IA A of CFD No. 15. According to the County Assessor, all property zoned for residential development within IA A of CFD No. 15 has been built and completed. As of the date of this Report, no Units have prepaid their Special Tax obligation and are no longer considered taxable property and are no longer subject to the Special Tax. The table below summarizes the Special Tax classification for the Units within IA A of CFD No. 15.

**Fiscal Year 2025/2026
Special Tax Classification**

Initial Tax Year	Land Use	Number of Units
2013/2014	Developed Property	6
2014/2015	Developed Property	163
2015/2016	Developed Property	40
Total		209

VII. Fiscal Year 2025/2026 Special Tax Levy

Each Fiscal Year, the Special Tax is levied up to the Maximum Special Tax rate, as determined by the provisions of the RMA, in the amount needed to satisfy the Minimum Annual Special Tax Requirement.

Based on the Minimum Annual Special Tax Requirement listed in Section V, IA A of CFD No. 15 will levy at the applied Special Tax rate allowable for each parcel classified as Developed Property. The special tax roll, containing a listing of each parcel's applied Special Tax and Maximum Special Tax, calculated pursuant to the RMA, can be found attached as Exhibit G.

A summary of the Special Tax levy for Fiscal Year 2025/2026 by Special Tax classification as determined by the RMA for IA A of CFD No. 15 can be found in the table on the following page.

Fiscal Year 2025/2026 Annual Special Tax Levy

Land Use	Tax Class	Sq. Footage	Number of Units	Assigned Annual Special Tax Rate	Total Assigned Annual Special Taxes
Detached Unit	1	≤ 1,550 Sq. Ft.	0 Units	\$2,469.96 Per Unit	\$0.00
Detached Unit	2	1,551 Sq. Ft. to 1,750 Sq. Ft.	0 Units	\$2,601.54 Per Unit	0.00
Detached Unit	3	1,751 Sq. Ft. to 1,950 Sq. Ft.	21 Units	\$2,703.22 Per Unit	56,767.62
Detached Unit	4	1,951 Sq. Ft. to 2,150 Sq. Ft.	0 Units	\$3,008.22 Per Unit	0.00
Detached Unit	5	2,151 Sq. Ft. to 2,350 Sq. Ft.	18 Units	\$3,139.80 Per Unit	56,516.40
Detached Unit	6	2,351 Sq. Ft. to 2,550 Sq. Ft.	39 Units	\$3,367.06 Per Unit	131,315.34
Detached Unit	7	2,551 Sq. Ft. to 2,750 Sq. Ft.	32 Units	\$3,642.16 Per Unit	116,549.12
Detached Unit	8	2,751 Sq. Ft. to 2,950 Sq. Ft.	37 Units	\$3,773.74 Per Unit	139,628.38
Detached Unit	9	2,951 Sq. Ft. to 3,150 Sq. Ft.	17 Units	\$3,977.08 Per Unit	67,610.36
Detached Unit	10	3,151 Sq. Ft. to 3,350 Sq. Ft.	0 Units	\$4,126.60 Per Unit	0.00
Detached Unit	11	3,351 Sq. Ft. to 3,550 Sq. Ft.	0 Units	\$4,204.34 Per Unit	0.00
Detached Unit	12	3,551 Sq. Ft. to 3,750 Sq. Ft.	0 Units	\$4,347.88 Per Unit	0.00
Detached Unit	13	3,750 Sq. Ft. to 3,950 Sq. Ft.	0 Units	\$4,461.50 Per Unit	0.00
Detached Unit	14	3,951 Sq. Ft. to 4,150 Sq. Ft.	0 Units	\$4,652.90 Per Unit	0.00
Detached Unit	15	> 4,150 Sq. Ft.	0 Units	\$4,844.28 Per Unit	0.00
Attached Unit	16	≤ 1,200 Sq. Ft.	0 Units	\$2,045.34 Per Unit	0.00
Attached Unit	17	1,201 Sq. Ft. to 1,350 Sq. Ft.	0 Units	\$2,200.82 Per Unit	0.00
Attached Unit	18	1,351 Sq. Ft. to 1,500 Sq. Ft.	0 Units	\$2,314.48 Per Unit	0.00
Attached Unit	19	1,501 Sq. Ft. to 1,650 Sq. Ft.	27 Units	\$2,469.96 Per Unit	66,688.92
Attached Unit	20	1,651 Sq. Ft. to 1,800 Sq. Ft.	2 Units	\$2,598.54 Per Unit	5,197.08
Attached Unit	21	> 1,800 Sq. Ft.	16 Units	\$2,703.22 Per Unit	43,251.52
Affordable Unit	22	NA	0 Units	\$0.00 Per Unit	0.00
Senior Citizen Unit	23	≤ 1,400 Sq. Ft.	0 Units	\$2,480.54 Per Unit	0.00
Senior Citizen Unit	24	1,401 Sq. Ft. to 1,800 Sq. Ft.	0 Units	\$2,730.14 Per Unit	0.00
Senior Citizen Unit	25	1,801 Sq. Ft. to 2,200 Sq. Ft.	0 Units	\$3,186.72 Per Unit	0.00
Senior Citizen Unit	26	> 2,200 Sq. Ft.	0 Units	\$3,710.28 Per Unit	0.00
Developed Property			209 Units	NA	\$683,524.74
Undeveloped Property			0.00 Acres	\$0.00 per Acre	\$0.00
Total			209 Units		\$683,524.74

https://calschools.sharepoint.com/cfs/unregulated/poway unified/developer revenue/cfd admin/cfd no. 15 ia a/fy 2025-26/poway usd_cfd 15 ia a_fy2025-26_specialtaxreport_d1.docx

Exhibit A

Rate and Method of Apportionment

RATE AND METHOD OF APPORTIONMENT FOR IMPROVEMENT AREA A OF COMMUNITY FACILITIES DISTRICT NO. 15 OF POWAY UNIFIED SCHOOL DISTRICT

The following sets forth the Rate and Method of Apportionment for the levy and collection of Special Taxes ("Rate and Method of Apportionment") of Improvement Area A ("IA A") of Community Facilities District No. 15 ("CFD No. 15") of the Poway Unified School District ("School District"). An Annual Special Tax shall be levied on and collected from Taxable Property (defined below) located within the boundaries of IA A of CFD No. 15 each Fiscal Year in an amount determined through the application of the Rate and Method of Apportionment described below. All of the real property in IA A of CFD No. 15, unless exempted by law or by the provisions hereof, shall be taxed for the purposes, to the extent, and in the manner herein provided.

SECTION A DEFINITIONS

For purposes of this Rate and Method of Apportionment the terms hereinafter set forth have the following meanings:

"Acreage" means the number of acres of land area of an Assessor's Parcel as shown on an Assessor's Parcel Map, or if the land area is not shown on an Assessor's Parcel Map, the Board may rely on the land area shown on the applicable final map, parcel map, condominium plan, or other recorded County parcel map.

"Act" means the Mello-Roos Communities Facilities Act of 1982, as amended, being Chapter 2.5, Division 2 of Title 5 of the Government Code of the State of California.

"Actual Costs" shall have the meaning given such term in the Second Supplement.

"Administrative Expenses" means any ordinary and necessary expense incurred by the School District on behalf of IA A of CFD No. 15 related to the determination of the amount of the levy of Special Taxes, the collection of Special Taxes, including the reasonable expenses of collecting delinquencies, the administration of Bonds, the proportionate payment of salaries and benefits of any School District employee whose duties are directly related to the administration of IA A of CFD No. 15, and reasonable costs otherwise incurred in order to carry out the authorized purposes of IA A of CFD No. 15.

"Affordable Unit" means an Attached Unit that is subject to affordable housing restrictions under any applicable law.

"Annual Special Tax" means the Special Tax actually levied in any Fiscal Year on any Assessor's Parcel.

"Assessor's Parcel" means a lot or parcel of land designated on an Assessor's Parcel Map with an assigned Assessor's Parcel Number within the boundaries of IA A of CFD No. 15.

"Assessor's Parcel Map" means an official map of the Assessor of the County designating parcels by Assessor's Parcel Number.

"Assessor's Parcel Number" means that number assigned to an Assessor's Parcel by the County for purposes of identification.

"Assigned Annual Special Tax" means the Special Tax of that name described in Section D.

"Attached Unit" means a Unit that is located or shall be located within a building in which each of the individual Units has or shall have at least one common wall with another Unit.

"Backup Annual Special Tax" means the Special Tax of that name described in Section E.

"Board" means the Board of Education of Poway Unified School District, or its designee, in certain cases acting as the Legislative Body of CFD No. 15.

"Bond Index" means the national Bond Buyer Revenue Index, commonly referenced as the 25-Bond Revenue Index. In the event the Bond Index ceases to be published, the index used shall be based on a comparable index for revenue bonds maturing in 30 year with an average rating equivalent to Moody's A1 and/or S&P's A+, as reasonably determined by the Board.

"Bond Yield" means the yield of the last series of Bonds issued, for purposes of this calculation the yield of the Bonds shall be the yield calculated at the time such Bonds are issued, pursuant to Section 148 of the Internal Revenue Code of 1986, as amended for the purpose of the Non-Arbitrage Certificate or other similar bond issuance document.

"Bonds" means any obligation to repay a sum of money, including obligations in the form of bonds, notes, certificates of participation, long-term leases, loans from government agencies, or loans from banks, other financial institutions, private businesses, or individuals, or long-term contracts, or any refunding thereof, to which the Special Taxes have been pledged for repayment.

"Building Permit" means a permit for the construction of one or more Units issued by the City, or another public agency in the event the City no longer issues said permits for the construction of Units within IA A of CFD No. 15. For purposes of this definition, "Building Permit" shall not include permits for construction or installation of structures, parking structures, retaining walls, utility improvements, or other such improvements not intended for human habitation or commercial/industrial use.

"Building Square Footage" or "BSF" means the square footage of assessable internal living space of a Unit, exclusive of any carports, walkways, garages, overhangs, patios, enclosed patios, detached accessory structures, other structures not used as living space, or any other square footage excluded under Government Code Section 65995 as determined by reference to the Building Permit for such Unit.

"City" means the City of San Diego.

"City Improvements" shall have the meaning given such term in the Second Supplement.

"County" means the County of San Diego.

"Developed Property" means all Assessor's Parcels of Taxable Property for which Building Permits were issued on or before May 1 of the prior Fiscal Year, provided that such Assessor's Parcels were created on or before January 1 of the prior Fiscal Year and that each such Assessor's Parcel is associated with a Lot, as determined reasonably by the Board.

"Detached Unit" means a Unit which is not an Attached Unit.

"Exempt Property" means all Assessor's Parcels designated as being exempt from Special Taxes in Section K each Fiscal Year as determined May 1st of the previous Fiscal Year.

"Final Subdivision Map" means a final tract map, parcel map, lot line adjustment, or functionally equivalent map or instrument that creates individual Lots, recorded in the County Office of the Recorder.

"Fiscal Year" means the period commencing on July 1 of any year and ending the following June 30.

"Homeowner" means any owner of a completed Unit constructed and sold within IA A of CFD No. 15.

"Lot" means an individual legal lot created by a Final Subdivision Map for which a Building Permit for residential construction has been or could be issued. Notwithstanding the foregoing, in the case of an individual legal lot created by such a Final Subdivision Map upon which condominium units are entitled to be developed but for which a condominium plan has not been recorded, the number of Lots allocable to such legal lot for purposes of calculating the Backup Special Tax applicable to such Final Subdivision Map shall equal the number of condominium units which are permitted to be constructed on such legal lot as shown on such Final Subdivision Map.

"Maximum Special Tax" means the maximum Special Tax, determined in accordance with Section C, that can be levied by IA A of CFD No. 15 in any Fiscal Year on any Assessor's Parcel.

"Minimum Annual Special Tax Requirement" means the amount required in any Fiscal Year to pay: (i) the debt service or the periodic costs on all outstanding Bonds, (ii) Administrative Expenses of IA A of CFD No. 15, (iii) the costs associated with the release of funds from an escrow account(s) established in association with the Bonds, and (iv) any amount required to establish or replenish any reserve funds (or accounts thereof) established in association with the Bonds, less (v) any amount(s) available to pay debt service or other periodic costs on the Bonds pursuant to any applicable bond indenture, fiscal agent agreement, trust agreement, or equivalent agreement or document. In arriving at the Minimum Annual Special Tax requirement the Board shall take into account the reasonably anticipated delinquent Special Taxes based on the delinquency rate for Special Taxes levied in the previous Fiscal Year.

"Minimum Taxable Acreage" means the applicable Acreage listed in Table 3 set forth in Section K.

"Net Taxable Acreage" means the total Acreage of all Taxable Property expected to exist in IA A of CFD No. 15 after all Final Subdivision Maps are recorded.

"Partial Prepayment Amount" means the amount required to prepay a portion of the Annual Special Tax obligation for an Assessor's Parcel as described in Section H.

"Prepayment Administrative Fees" means any fees or expenses of the School District or IA A of CFD No. 15 associated with the prepayment of the Special Tax obligation of an Assessor's Parcel. Prepayment Administrative Fees shall include among other things the cost of computing the Prepayment Amount, redeeming Bonds, and recording any notices to evidence the prepayment and redemption of Bonds.

"Prepayment Amount" means the amount required to prepay the Annual Special Tax obligation in full for an Assessor's Parcel as described in Section G.

"Present Value of Taxes" means for any Assessor's Parcel the present value of (i) the unpaid portion, if any, of the Special Tax applicable to such Assessor's Parcel in the current Fiscal Year and (ii) the Annual Special Taxes expected to be levied on such Assessor's Parcel in each remaining Fiscal Year, as determined by the Board, until the termination date specified in Section J. The discount rate used for this calculation shall be equal to the (i) Bond Yield after Bond issuance or (ii) most recently published Bond Index prior to Bond issuance.

"Proportionately" means that the ratio of the actual Annual Special Tax levy to the applicable Assigned Annual Special Tax or Maximum Annual Special Tax is equal for all applicable Assessor's Parcels.

"Reserve Fund Credit" means an amount equal to the lesser of (i) the reduction in the applicable reserve fund requirement(s) resulting from the redemption of Bonds with the Prepayment Amount or (ii) 10% of the amount of Bonds which will be redeemed. In the event that a surety bond or other credit instrument satisfies the reserve requirement or the reserve requirement is underfunded at the time of the prepayment no Reserve Fund Credit shall be given.

"Second Supplement" shall mean that Second Supplement to Subarea I Black Mountain Ranch Phase II School Impact Mitigation Agreement made and entered into as of October 1, 2012 by and between the School District and Black Mountain Ranch LLC.

"Senior Citizen Unit" means a Unit designated as senior citizen housing, part of a residential care facility for the elderly, or part of a multilevel care facility for the elderly as referred to in California Government Code Section 65995.1. For the purpose hereof it shall be sufficient to designate a Unit as a Senior Citizen Unit if Senior Citizen Restrictions have been affected with respect to such Unit.

"Senior Citizen Restriction" means (i) a restriction limiting the use of Units to senior citizen housing under a specific plan, a final map or other governmental entitlements, or a declaration of covenants, conditions and restrictions or any similar recorded instrument or (ii) licensing from appropriate agencies received for residential care facilities for the elderly or multilevel care facilities as those terms are defined in Health and Safety Code Section 1569.23 and Government Code Section 15432(d)(8), respectively.

"Special Tax" means any of the special taxes authorized to be levied by IA A of CFD No. 15 pursuant to the Act.

"Taxable Property" means all Assessor's Parcels which are not Exempt Property.

"Undeveloped Property" means all Assessor's Parcels of Taxable Property which are not Developed Property.

"Unit" means each separate residential dwelling unit which comprises an independent facility capable of conveyance separate from adjacent residential dwelling units. Each Unit shall be classified as an Attached Unit or a Detached Unit.

SECTION B CLASSIFICATION OF ASSESSOR'S PARCELS

For each Fiscal Year, beginning with Fiscal Year 2012/2013, each Assessor's Parcel within IA A of CFD No. 15 shall be classified as Taxable Property or Exempt Property taking into consideration the Minimum Net Taxable Acreage as set forth in Section K. Furthermore, each Assessor's Parcel of Taxable Property shall be classified as Developed Property or Undeveloped Property and Developed Property shall be assigned to a special tax classification according to Table 1 below.

TABLE 1
**SPECIAL TAX CLASSIFICATION FOR
DEVELOPED PROPERTY**

Tax Classification	Unit Type	Building Square Footage
1	Detached Unit	≤ 1,550
2	Detached Unit	1,551 – 1,750

A-5

TABLE 1 (CONTINUED)**SPECIAL TAX CLASSIFICATION FOR
DEVELOPED PROPERTY**

Tax Classification	Unit Type	Building Square Footage
3	Detached Unit	1,751 – 1,950
4	Detached Unit	1,951 – 2,150
5	Detached Unit	2,151 – 2,350
6	Detached Unit	2,351 – 2,550
7	Detached Unit	2,551 – 2,750
8	Detached Unit	2,751 – 2,950
9	Detached Unit	2,951 – 3,150
10	Detached Unit	3,151 – 3,350
11	Detached Unit	3,351 – 3,550
12	Detached Unit	3,551 – 3,750
13	Detached Unit	3,751 – 3,950
14	Detached Unit	3,951 – 4,150
15	Detached Unit	> 4,150
16	Attached Unit	≤ 1,200
17	Attached Unit	1,201 – 1,350
18	Attached Unit	1,351 – 1,500
19	Attached Unit	1,501 – 1,650
20	Attached Unit	1,651 – 1,800
21	Attached Unit	> 1,800
22	Affordable Unit	NA
23	Senior Citizen Unit	≤ 1,400
24	Senior Citizen Unit	1,401 – 1,800
25	Senior Citizen Unit	1,801 – 2,200
26	Senior Citizen Unit	> 2,200

SECTION C MAXIMUM SPECIAL TAXES

1. Developed Property

The Maximum Special Tax for each Assessor's Parcel classified as Developed Property for any Fiscal Year shall be the amount determined by the greater of (a) the application of the Assigned Annual Special Tax or (b) the application of the Backup Annual Special Tax for a given Final Subdivision Map.

2. Undeveloped Property

The Maximum Special Tax for each Assessor's Parcel classified as Undeveloped Property for any Fiscal Year shall be the amount determined by the application of the Assigned Annual Special Tax.

SECTION D ASSIGNED ANNUAL SPECIAL TAXES

1. Developed Property

The Assigned Annual Special Tax in Fiscal Year 2012/2013 for each Assessor's Parcel of Developed Property shall be the amount determined by reference to Table 2 subject to increases as described below.

TABLE 2
**ASSIGNED ANNUAL SPECIAL TAX FOR
DEVELOPED PROPERTY
FISCAL YEAR 2012/2013**

Tax Classification	Unit Type	Building Square Footage	Assigned Annual Special Tax
1	Detached Unit	< 1,550	\$1,909.37 per Unit
2	Detached Unit	1,550 – 1,750	\$2,011.08 per Unit
3	Detached Unit	1,751 – 1,950	\$2,089.68 per Unit
4	Detached Unit	1,951 – 2,150	\$2,325.46 per Unit
5	Detached Unit	2,151 – 2,350	\$2,427.17 per Unit
6	Detached Unit	2,351 – 2,550	\$2,602.85 per Unit
7	Detached Unit	2,551 – 2,750	\$2,815.52 per Unit
8	Detached Unit	2,751 – 2,950	\$2,917.23 per Unit
9	Detached Unit	2,951 – 3,150	\$3,074.42 per Unit

TABLE 2 (CONTINUED)

**ASSIGNED ANNUAL SPECIAL TAX FOR
DEVELOPED PROPERTY
FISCAL YEAR 2012/2013**

Tax Classification	Unit Type	Building Square Footage	Assigned Annual Special Tax
10	Detached Unit	3,151 – 3,350	\$3,190.00 per Unit
11	Detached Unit	3,351 – 3,550	\$3,250.10 per Unit
12	Detached Unit	3,551 – 3,750	\$3,361.06 per Unit
13	Detached Unit	3,751 – 3,950	\$3,448.90 per Unit
14	Detached Unit	3,951 – 4,150	\$3,596.85 per Unit
15	Detached Unit	> 4,150	\$3,744.79 per Unit
16	Attached Unit	< 1,200	\$1,581.12 per Unit
17	Attached Unit	1,200 – 1,350	\$1,701.32 per Unit
18	Attached Unit	1,351 – 1,500	\$1,789.17 per Unit
19	Attached Unit	1,501 – 1,650	\$1,909.37 per Unit
20	Attached Unit	1,651 – 1,800	\$2,008.77 per Unit
21	Attached Unit	> 1,800	\$2,089.68 per Unit
22	Affordable Unit	NA	\$0.00 per Unit
23	Senior Citizen Unit	≤ 1,400	\$1,917.55 per Unit
24	Senior Citizen Unit	1,401 – 1,800	\$2,110.50 per Unit
25	Senior Citizen Unit	1,801 – 2,200	\$2,463.45 per Unit
26	Senior Citizen Unit	> 2,200	\$2,868.17 per Unit

Each July 1, commencing July 1, 2013, the Assigned Annual Special Tax for each Assessor's Parcel of Developed Property shall be increased by two percent (2.00%) of the amount in effect the prior Fiscal Year.

2. Undeveloped Property

The Assigned Annual Special Tax rate in Fiscal Year 2012/2013 for an Assessor's Parcel classified as Undeveloped Property shall be \$9,853.86 per acre of Acreage.

Each July 1, commencing July 1, 2013, the Assigned Annual Special Tax per acre of Acreage for each Assessor's Parcel of Undeveloped Property shall be increased by two percent (2.00%) of the amount in effect the prior Fiscal Year.

SECTION E BACKUP ANNUAL SPECIAL TAXES

Each Fiscal Year, each Assessor's Parcel of Developed Property shall be subject to a Backup Annual Special Tax. The Backup Annual Special Tax rate for an Assessor's Parcel of Developed Property within a Final Subdivision Map in Fiscal Year 2012/2013 or such later Fiscal Year in which such Final Subdivision Map is created shall be the rate per Lot calculated according to the following formula:

$$B = \frac{U \times A}{L}$$

The terms above have the following meanings:

B	=	Backup Annual Special Tax per Lot
U	=	Assigned Annual Special Tax per acre of Acreage for Undeveloped Property in the Fiscal Year which the calculation is performed
A	=	Acreage of Taxable Property in such Final Subdivision Map at time of calculation, as determined by the Board pursuant to Section K
L	=	Lots in the Final Subdivision Map at the time of calculation

Each July 1, commencing the July 1 first following the initial calculation of the Backup Annual Special Tax rate for an Assessor's Parcel of Developed Property with a Final Subdivision Map, the Backup Annual Special Tax for each Lot within such Final Subdivision Map shall be increased by two percent (2.00%) of the amount in effect the prior Fiscal Year.

Notwithstanding the foregoing, if all or any portion of the Final Subdivision Map(s) described in the preceding paragraph is subsequently changed or modified, then the Backup Annual Special Tax for each Assessor's Parcel of Developed Property in such Final Subdivision Map that is changed or modified shall be a rate per square foot of Acreage calculated as follows:

1. Determine the total Backup Annual Special Taxes anticipated to apply to the changed or modified area in the Final Subdivision Map prior to the change or modification in the current Fiscal Year.
2. The result of paragraph 1 above shall be divided by the Acreage of Taxable Property which is ultimately expected to exist in such changed or modified area in the Final Subdivision Map, as reasonably determined by the Board.
3. The result of paragraph 2 above shall be divided by 43,560. The result is the Backup Annual Special Tax per square foot of Acreage which shall be applicable to Assessor's Parcels of Developed

Property in such changed or modified area of the Final Subdivision Map. Each July 1, commencing the July 1 first following the change or modification to be Final Subdivision Map the amount determined by this Section shall be increased by two percent (2.00%) of the amount in effect the prior Fiscal Year.

SECTION F METHOD OF APPORTIONMENT OF THE ANNUAL SPECIAL TAX

Commencing Fiscal Year 2012/2013, and for each subsequent Fiscal Year, the Board shall levy Annual Special Taxes as follows:

- Step One: The Board shall levy an Annual Special Tax on each Assessor's Parcel of Developed Property in an amount equal to the Assigned Annual Special Tax applicable to each such Assessor's Parcel.
- Step Two: If the sum of the amounts collected in step one is insufficient to satisfy the Minimum Annual Special Tax Requirement, then the Board shall Proportionately levy an Annual Special Tax on each Assessor's Parcel of Undeveloped Property up to the Assigned Annual Special Tax applicable to each such Assessor's Parcel to satisfy the Minimum Annual Special Tax Requirement.
- Step Three: If the sum of the amounts collected in steps one and two is insufficient to satisfy the Minimum Annual Special Tax Requirement, then the Board shall Proportionately levy an Annual Special Tax on each Assessor's Parcel of Developed Property up to the Maximum Special Tax applicable to each such Assessor's Parcel to satisfy the Minimum Annual Special Tax Requirement.

SECTION G PREPAYMENT OF ANNUAL SPECIAL TAXES

The Annual Special Tax obligation of an Assessor's Parcel of Developed Property, or an Assessor's Parcel of Undeveloped Property for which a Building Permit has been issued, may be prepaid in full provided that there are no delinquent Special Taxes, penalties, or interest charges outstanding with respect to such Assessor's Parcel at the time the Annual Special Tax obligation would be prepaid.

An owner of an Assessor's Parcel intending to prepay the Annual Special Tax obligation shall provide IA A of CFD No. 15 with written notice of intent to prepay. Within thirty (30) days of receipt of such written notice, the Board shall reasonably determine the Prepayment Amount of such Assessor's Parcel and shall notify such owner of such Prepayment Amount. Notwithstanding the above, the ability to prepay the Annual Special Tax obligation of an Assessor's Parcel may be suspended, by the Superintendent of the School District or his or her designee, acting in his or her absolute and sole discretion for and on behalf of CFD No. 15, without notice to the owners of property within IA A for a period of time, not to exceed sixty (60) days, prior to the scheduled issuance of Bonds by IA A of CFD No. 15 to assist in the efficient preparation of the required bond market disclosure. The Prepayment Amount for an Assessor's Parcel eligible for prepayment shall be determined as described below.

A-10

1. Prior to the Issuance of Bonds

Prior to the issuance of Bonds, the Prepayment Amount shall be determined by reference to Table 3, subject to increase as described below.

TABLE 3

**PREPAYMENT AMOUNT
PRIOR TO THE ISSUANCE OF BONDS
FISCAL YEAR 2012/2013**

Tax Classification	Unit Type	Building Square Footage	Prepayment Amount
1	Detached Unit	< 1,550	\$24,390.27 per Unit
2	Detached Unit	1,550 – 1,750	\$25,689.52 per Unit
3	Detached Unit	1,751 – 1,950	\$26,693.49 per Unit
4	Detached Unit	1,951 – 2,150	\$29,705.40 per Unit
5	Detached Unit	2,151 – 2,350	\$31,004.65 per Unit
6	Detached Unit	2,351 – 2,550	\$33,248.82 per Unit
7	Detached Unit	2,551 – 2,750	\$35,965.45 per Unit
8	Detached Unit	2,751 – 2,950	\$37,264.70 per Unit
9	Detached Unit	2,951 – 3,150	\$39,272.64 per Unit
10	Detached Unit	3,151 – 3,350	\$40,749.07 per Unit
11	Detached Unit	3,351 – 3,550	\$41,516.81 per Unit
12	Detached Unit	3,551 – 3,750	\$42,934.18 per Unit
13	Detached Unit	3,751 – 3,950	\$44,056.26 per Unit
14	Detached Unit	3,951 – 4,150	\$45,946.09 per Unit
15	Detached Unit	> 4,150	\$47,835.91 per Unit
16	Attached Unit	< 1,200	\$20,197.22 per Unit
17	Attached Unit	1,200 – 1,350	\$21,732.70 per Unit
18	Attached Unit	1,351 – 1,500	\$22,854.78 per Unit
19	Attached Unit	1,501 – 1,650	\$24,390.27 per Unit

TABLE 3 (CONTINUED)

**PREPAYMENT AMOUNT
PRIOR TO THE ISSUANCE OF BONDS
FISCAL YEAR 2012/2013**

Tax Classification	Unit Type	Building Square Footage	Prepayment Amount
20	Attached Unit	1,651 – 1,800	\$25,659.99 per Unit
21	Attached Unit	> 1,800	\$26,693.49 per Unit
22	Affordable Unit	NA	\$0.00 per Unit
23	Senior Citizen Unit	< 1,400	\$24,494.82 per Unit
24	Senior Citizen Unit	1,400 – 1,800	\$26,959.51 per Unit
25	Senior Citizen Unit	1,801 – 2,200	\$31,468.08 per Unit
26	Senior Citizen Unit	> 2,200	\$36,637.92 per Unit

Each July 1, commencing July 1, 2013, the Prepayment Amount for each Assessor's Parcel of Developed Property prior to the issuance of Bonds shall be increased by two percent (2.00%) of the amount in effect the prior Fiscal Year.

2. Subsequent to the Issuance of Bonds

Subsequent to the issuance of Bonds the Prepayment Amount shall be calculated according to the following formula:

$$P = PVT - RFC + PAF$$

The terms above have the following meanings:

P	=	Prepayment Amount
PVT	=	Present Value of Taxes
RFC	=	Reserve Fund Credit
PAF	=	Prepayment Administrative Fees

Notwithstanding the foregoing, no prepayment will be allowed unless the amount of Annual Special Taxes that may be levied on Taxable Property, net of Administrative Expenses, shall be at least 1.1 times the regularly scheduled annual interest and principal payments on all currently outstanding Bonds in each future Fiscal Year and such prepayment will not impair the security of all currently outstanding Bonds, as reasonably determined by the Board. Such determination shall include identifying all Assessor's Parcels that are expected to become Exempt Property.

With respect to any Assessor's Parcel that is prepaid, the Board shall indicate in the records of IA A of CFD No. 15 that there has been a prepayment of the Annual Special Tax obligation and shall cause a suitable notice to be recorded in compliance with the

Act to indicate the prepayment of the Annual Special Tax obligation and the release of the Annual Special Tax lien on such Assessor's Parcel, and the obligation of such Assessor's Parcel to pay such Annual Special Tax shall cease.

SECTION H

PARTIAL PREPAYMENT OF ANNUAL SPECIAL TAXES

The Annual Special Tax obligation of an Assessor's Parcel may be partially prepaid at the times and under the conditions set forth in this Section, provided that there are no delinquent Special Taxes, penalties, or interest charges outstanding with respect to such Assessor's Parcel at the time the Annual Special Tax obligation would be prepaid.

1. Partial Prepayment Times and Conditions

Prior to the conveyance of the first production Unit on a Lot within a Final Subdivision Map to a Homeowner, the owner of no less than all the Taxable Property within such Final Subdivision Map may elect in writing to the Board to prepay a portion of the Annual Special Tax obligations for all the Assessor's Parcels within such Final Subdivision Map, as calculated in Section H.2. below. The partial prepayment of each Annual Special Tax obligation shall be collected for all Assessor's Parcels prior to the conveyance of the first production Unit to a Homeowner with respect to such Final Subdivision Map.

2. Partial Prepayment Amount

The Partial Prepayment Amount shall be calculated according to the following formula:

$$PP = P_G \times F$$

The terms above have the following meanings:

PP = the Partial Prepayment Amount
P_G = the Prepayment Amount calculated according to Section G
F = the percent by which the owner of the Assessor's Parcel is partially prepaying the Annual Special Tax obligation

3. Partial Prepayment Procedures and Limitations

With respect to any Assessor's Parcel that is partially prepaid, the Board shall indicate in the records of IA A of CFD No. 15 that there has been a partial prepayment of the Annual Special Tax obligation and shall cause a suitable notice to be recorded in compliance with the Act to indicate the partial prepayment of the Annual Special Tax obligation and the partial release of the Annual Special Tax lien on such Assessor's Parcel, and the obligation of such Assessor's Parcel to pay such prepaid portion of the Annual Special Tax shall cease. Additionally, the notice shall indicate that the Assigned Annual Special Tax and the Backup Annual Special Tax if applicable for the Assessor's Parcel has been reduced by an amount equal to the percentage which was partially prepaid.

Notwithstanding the foregoing, no partial prepayment will be allowed unless the amount of Annual Special Taxes that may be levied on Taxable Property after such partial prepayment, net of Administrative Expenses, shall be at least 1.1 times the regularly scheduled annual interest and principal payments on all currently outstanding Bonds in each future Fiscal Year and such partial prepayment will not impair the security of all currently outstanding Bonds, as reasonably determined by the Board. Such determination shall include identifying all Assessor's Parcels that are expected to become Exempt Property.

SECTION I ANNUAL SPECIAL TAX REMAINDER

In any Fiscal Year prior to the issuance of Bonds which the Annual Special Taxes collected from Developed Property, pursuant to Step 1 of Section F, exceeds the Minimum Annual Special Tax Requirement such amount shall be used to pay Actual Costs of City Improvements. After the issuance of Bonds, the School District shall use such amounts for acquisition, construction or financing of school facilities in accordance with the Act, IA A of CFD No. 15 proceedings and other applicable laws as determined by the Board.

SECTION J TERMINATION OF SPECIAL TAX

Annual Special Taxes shall be levied for a period of thirty-three (33) Fiscal Years after the last series of Bonds have been issued, provided that Annual Special Taxes shall not be levied after Fiscal Year 2055-2056.

SECTION K EXEMPTIONS

The Board shall classify as Exempt Property (i) Assessor's Parcels owned by the State of California, Federal or other local governments, (ii) Assessor's Parcels which are used as places of worship and are exempt from *ad valorem* property taxes because they are owned by a religious organization, (iii) Assessor's Parcels owned by a homeowners' association, (iv) Assessor's Parcels with public or utility easements making impractical their utilization for other than the purposes set forth in the easement, (v) Assessor's Parcels developed or expected to be developed exclusively for non-residential use, including any use directly servicing any non-residential property, such as parking, as reasonably determined by the Board, and (vi) any other Assessor's Parcels at the reasonable discretion of the Board, provided that no such classification would reduce the Net Taxable Acreage to less than the Minimum Net Taxable Acreage listed in Table 4 below. Notwithstanding the above, the Board shall not classify an Assessor's Parcel as Exempt Property if such classification would reduce the sum of all Taxable Property to less than the Minimum Net Taxable Acreage. Assessor's Parcels which cannot be classified as Exempt Property because such classification would reduce the Acreage of all Taxable Property to less than the Minimum Taxable Acreage will continue to be classified as Developed Property or Undeveloped Property, as applicable, and will continue to be subject to Special Taxes accordingly.

TABLE 4

MINIMUM NET TAXABLE ACREAGE

Taxable Acres
56.83 Acres

SECTION L APPEALS

Any property owner claiming that the amount or application of the Special Tax is not correct may file a written notice of appeal with the Board not later than twelve months after having paid the first installment of the Special Tax that is disputed. In order to be considered sufficient, any notice of appeal must: (i) specifically identify the property by address and Assessor's Parcel Number; (ii) state the amount in dispute and whether it is the whole amount or only a portion of the Special Tax; (iii) state all grounds on which the property owner is disputing the amount or application of the Special Tax, including a reasonably detailed explanation as to why the amount or application of such Special Tax is incorrect; (iv) include all documentation, if any, in support of the claim; and (v) be verified under penalty of perjury by the person who paid the Special Tax or his or her guardian, executor or administrator. A representative(s) of IA A of CFD No. 15 shall promptly review the appeal, and if necessary, meet with the property owner, consider written and oral evidence regarding the amount of the Special Tax, and rule on the appeal. If the representative's decision requires that the Special Tax for an Assessor's Parcel be modified or changed in favor of the property owner, a cash refund shall not be made (except for the last year of levy), but an adjustment shall be made to the Annual Special Tax on that Assessor's Parcel in the subsequent Fiscal Year(s) as the representative's decision shall indicate.

SECTION M MANNER OF COLLECTION

The Annual Special Tax shall be collected in the same manner and at the same time as ordinary *ad valorem* property taxes and shall be subject to the same penalties, the same procedure, sale and lien priority in the case of delinquency; provided, however, that IA A of CFD No. 15 may directly bill the Special Tax, may collect Special Taxes at a different time or in a different manner if necessary to meet its financial obligations, and if so collected, a delinquent penalty of 10% of the Special Tax will attach at 5:00 p.m. on the date the Special Tax becomes delinquent and interest at 1.5% per month of the Special Tax will attach on the July 1 after the delinquency date and the first of each month thereafter until such Special Taxes are paid.

S:\Clients\Poway Unified SD\Finance\CFDs\CFD No. 15\Working\RMA\RMA_CFD_15_IA A_Draft_10012012.docx

Exhibit B

CFD Boundary Map

PROPOSED BOUNDARIES OF
POWAY UNIFIED SCHOOL DISTRICT
IMPROVEMENT AREA NO. A OF
COMMUNITY FACILITIES DISTRICT NO. 15
(Del Sur East)
SAN DIEGO COUNTY
STATE OF CALIFORNIA

(1) Filed in the office of the Secretary to the Board of Education this 26th day of November, 2012.

Paul Pellini
Secretary to the Board of Education

(2) I hereby certify that the within map showing the boundaries of IA No. A of Community Facilities District No. 15 (Del Sur East), San Diego County, State of California, was approved by the Board of Education of the Poway Unified School District at a regular meeting thereof held on this 13th day of November, 2012, by its Resolution No. 18-2013.

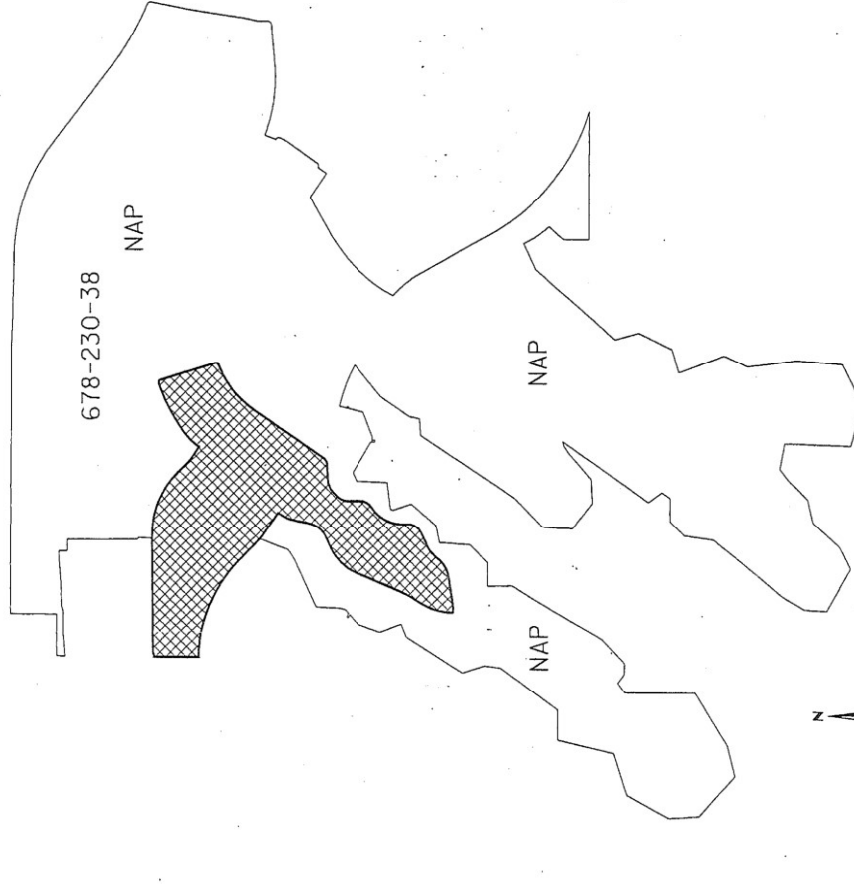
Paul Pellini
Secretary to the Board of Education

(3) Filed this 20th day of NOV., 2012, at the hour of 3:49 o'clock P.M. in Book 43 of Maps of Assessment and Community Facilities Districts at page 92 and as Instrument No. 12-0734512 in the office of the County Recorder of San Diego County, State of California.

Joseph L. Figueroa
County Recorder of San Diego County
Ernest L. Greenburg, Jr.

Reference is hereby made to the Assessor maps of the County of San Diego for an exact description of the lines and dimensions of each lot and parcel.

RICK
ENGINEERING COMPANY
San Diego
5520 PRIMAS ROAD
SAN DIEGO, CA 92110
619.591.1211
(619) 591-1165
Beverly Sacramento Orange Riverside Tucson
J. 10727
rickengineering.com
Phone



LEGEND

Boundaries of IA No. A of
Community Facilities
District No. 15 (Del Sur East)
Boundaries of APN
Exhibit A

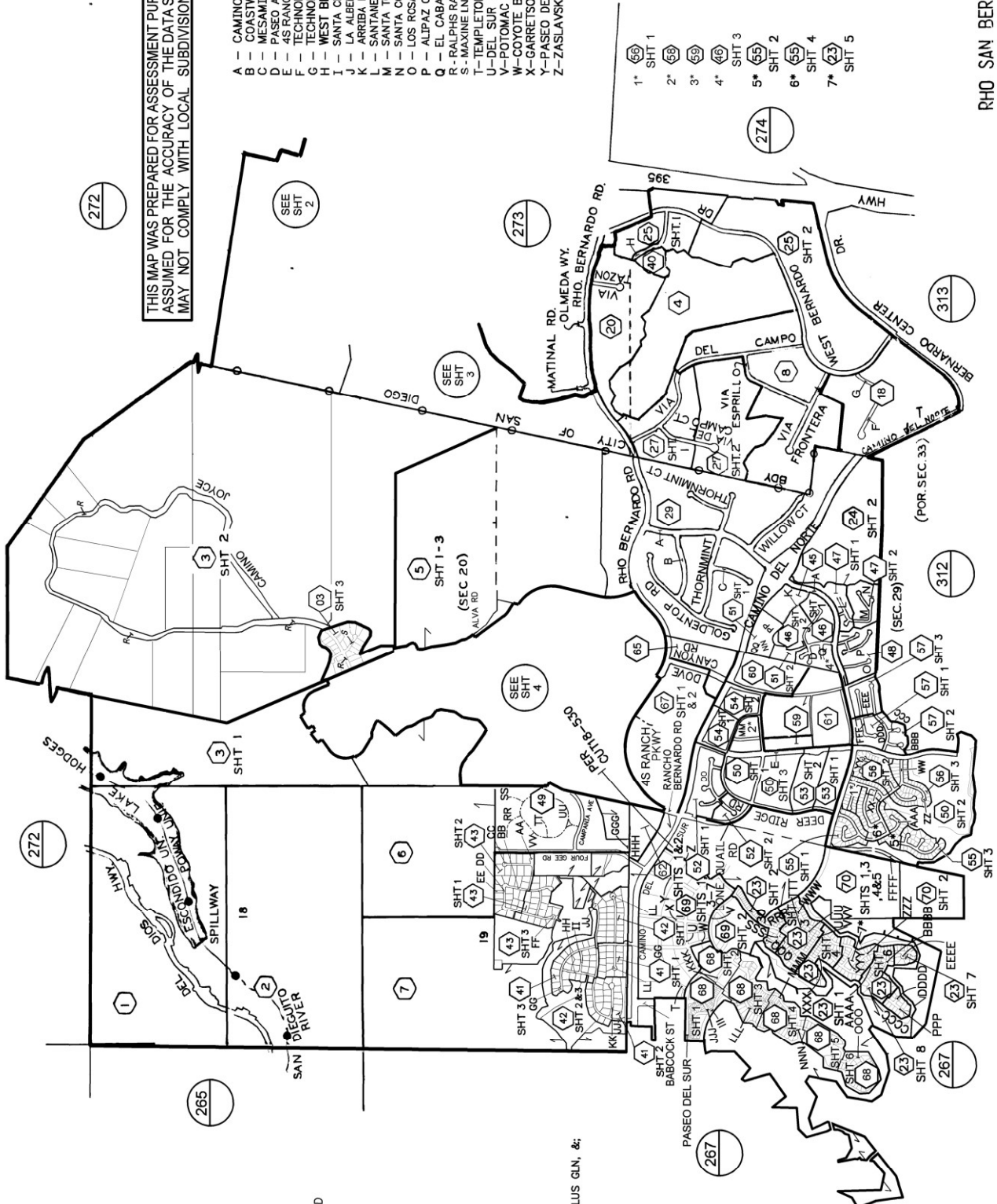
Exhibit C

Assessor's Parcel Maps

- AA LAVENDER STAR DR
BB SILVER GUM WAY
CC HOLLY LEAF CT
DD TEA TREE LN
EE PURPLE LEAF WAY
FF TALLOW TREE LN
GG COYOTE BUSH DR
HH SAW LEAF LN
II ISLAND PINE WAY
JJ BERNARDO LAKES DR
KK WHITE ALDER CT
LL FOSTORIA CT
MM PRAIRIE SPRINGS RD
NN ABUNDANT ST
OO FALCON BLUFF ST
PP ARBIDA LINDA AVE
QQ CLASICO CT
RR SANGALLO LN
SS MURANO LN
TT CASTLE LN
UU CASTLE CIR
VV PIEZA PL
WW DEER TRAIL DR
XX FOX VALLEY DR
YY PINTO RIDGE DR
ZZ DEER TRAIL CT
AAA DEER RIDGE RD
BBB LONE BLUFF WAY
CCC LONE BLUFF DR
DDD LONE HAWK DR
EEE LONE DOVE ST
FFF ARTESIAN RD
GGG SAN JUAN HORSE GLN
HHH TALLUS GLN, &
III LESAR PL
JJJ BABCOCK ST
KKK TANNER RIDGE RD
LLL POTOMAC RIDGE RD
MMM TANNER RIDGE CT
NNN TANNER RIDGE CIR
OOO NICOLE RIDE RD
PPP NEWCOMB ST
QQQ DYER LN
RRR BASS LN
SSS TRENT PL
TTT SIMONS LN
UUU WILKES LN
VVV EDGEMOUNT RD
WWW WAKEFIELD LN
XXX ANGELINE PL
YYY SINCLAIR ST
ZZZ HOPPER LN
AAAA KENNICOTT LN
BBBB WADSWORTH PL
CCCC THOREAU PL
DDDD SHERWIN PL
EEEE BLACK MTN RD
FFFF

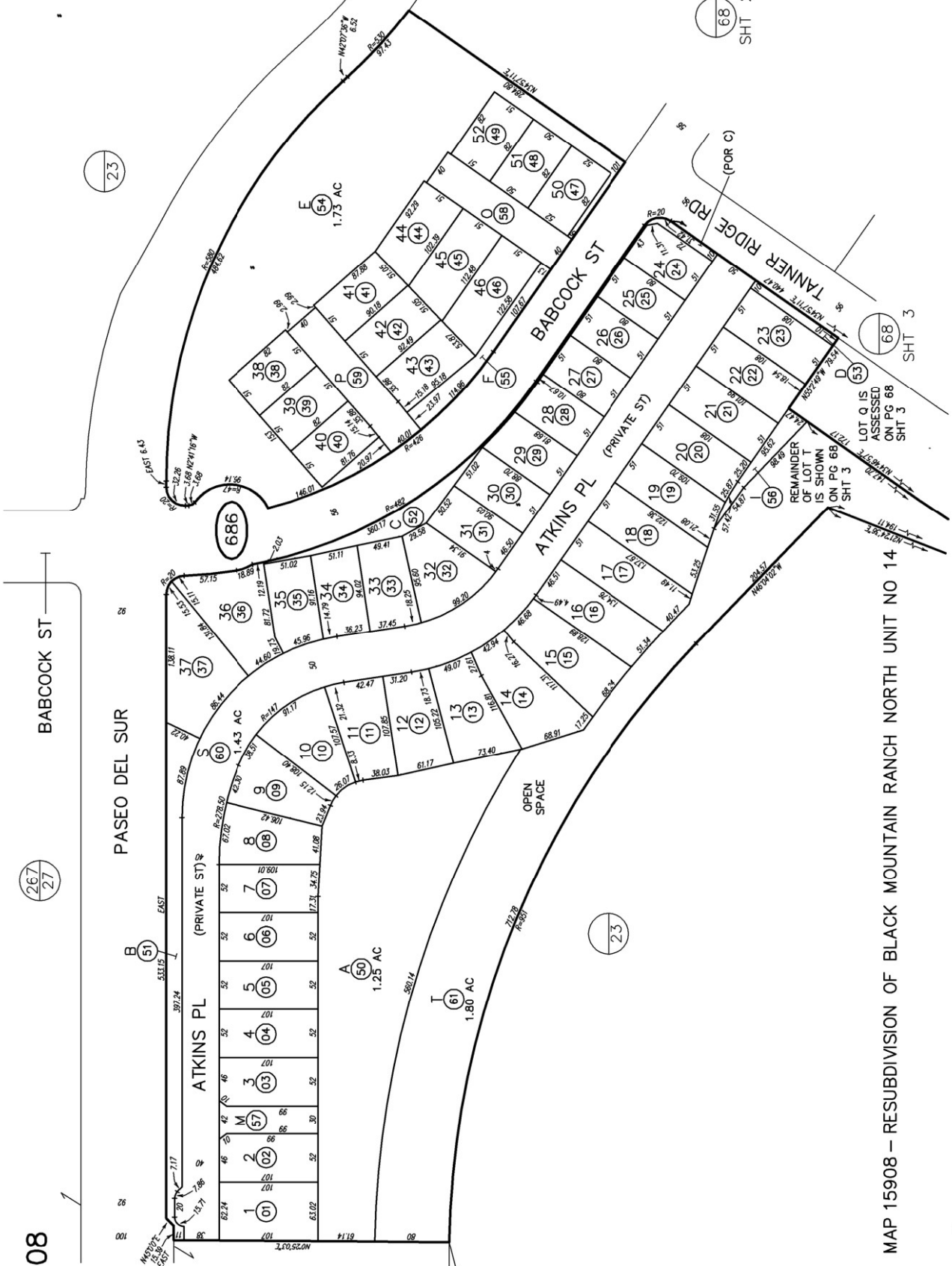
THIS MAP WAS PREPARED FOR ASSESSMENT PURPOSES ONLY. NO LIABILITY IS ASSUMED FOR THE ACCURACY OF THE DATA SHOWN. ASSESSOR'S PARCELS MAY NOT COMPLY WITH LOCAL SUBDIVISION OR BUILDING ORDINANCES.

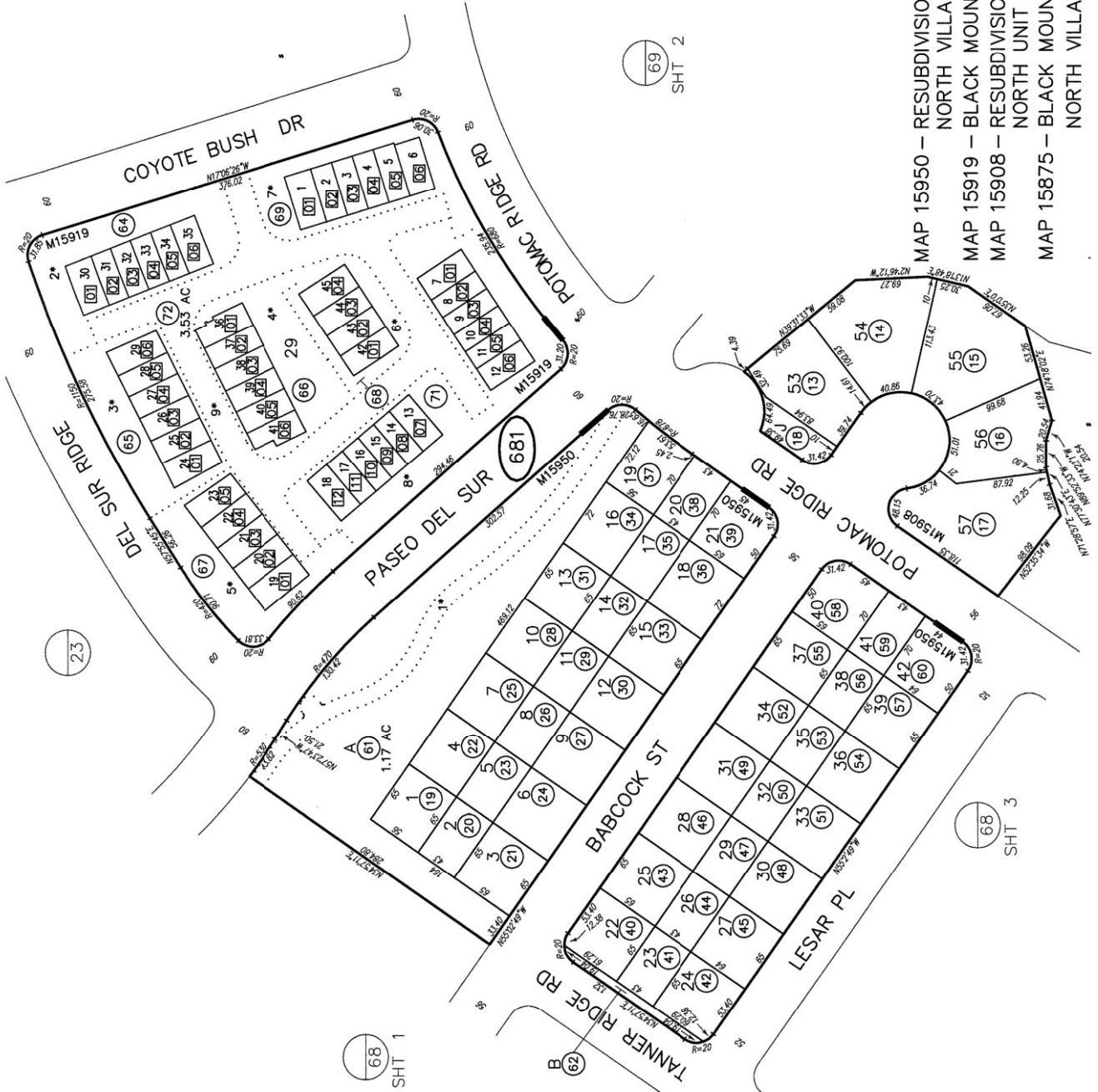
- A - CAMINO SAN BERNARDO
B - COASTWOOD RD
C - MESAMINT ST
D - PASEO ALLEGRIA AVE
E - 45 RANCH PKWY
F - TECHNOLOGY PL
G - TECHNOLOGY DR
H - WEST BERNARDO CT
I - SANTA CRISTOBAL ST
J - LA ALBERCA AVE
K - ARBIDA LINDA AVE
L - SANTA ANIELLA ST
M - SANTA ANIELLA AVE
N - SANTA CORONA CT
O - LOS ROSALES ST
P - ALIPAZ CT
Q - EL CABALLO AVE
R - RALPHS RANCH RD
S - MAXINE LN
T - TEMPLETON ST
U - DEL SUR RIDGE RD
V - POTOMAC RIDGE RD
W - COYOTE BUSH DR
X - GARRETSON ST
Y - PASEO DEL SUR
Z - ZASLAVSKY PL



RHO SAN BERNARDO
T13S-R2W

CHANGES			
BLK	PROJ APN	NEW APN	YR (OUT NO)
688	688-01	1 THRU 87	13 22
688	688-01	1 THRU 61	14 21
688	688-01	1 THRU 61	14 21





SAN DIEGO COUNTY ASSESSOR'S MAP
678-68
SHT 2 OF 6
1" = 100'
12/28/2016 RLW
Drawn: 8/23/12 By: AGC From: 678-230

CHANGES

BLK	PROJ	APN	NEW APN	YR	OUT NO
681					
		1 THRU 6	11 THRU 10	13	22
		8 & 10	11 THRU 18	14	21
		11 & 12	19 THRU 62	14	63
		07 & 08	63	14	32
		63	64 THRU 70	15	532
		70	71 SUO	15	532
			& 72	17	62

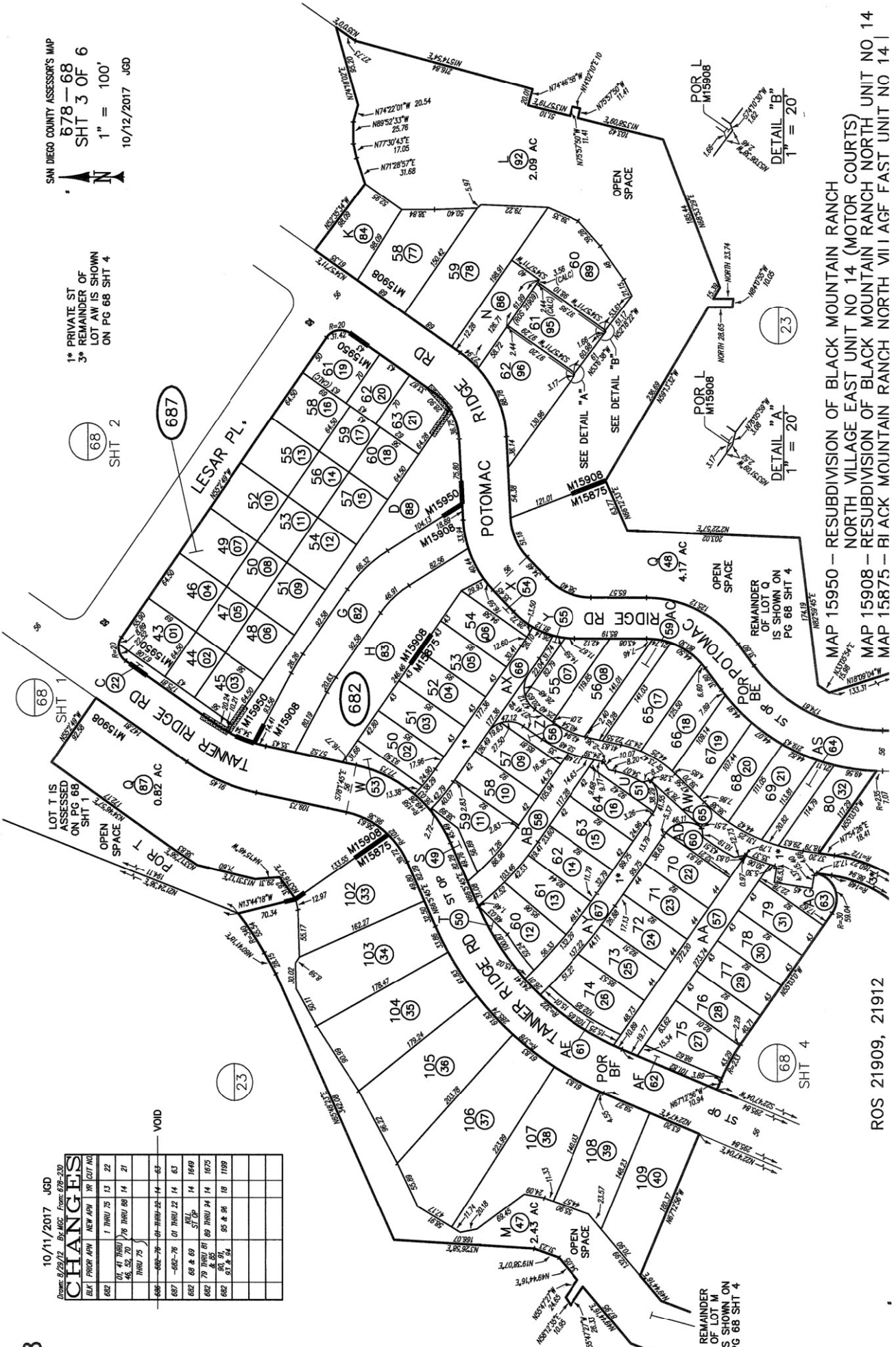
THIS MAP WAS PREPARED FOR ASSESSMENT PURPOSES ONLY. NO LIABILITY IS ASSURED FOR THE ACCURACY OF THE DATA SHOWN. ASSESSOR'S PARCELS MAY NOT COMPLY WITH LOCAL SUBDIVISION OR BUILDING ORDINANCES.

10/11/2017 JGD

Drawn: 9/29/12 By: MGC From: 678-220

CHANGES	NEW	REV	DATE	BY	REASON
687	1	THRU 25	13	22	
688	1	THRU 25	14	21	
689	1	THRU 25	14	21	
690	1	THRU 25	14	21	
691	1	THRU 25	14	21	
692	1	THRU 25	14	21	
693	1	THRU 25	14	21	
694	1	THRU 25	14	21	
695	1	THRU 25	14	21	
696	1	THRU 25	14	21	
697	1	THRU 25	14	21	
698	1	THRU 25	14	21	
699	1	THRU 25	14	21	
700	1	THRU 25	14	21	
701	1	THRU 25	14	21	
702	1	THRU 25	14	21	
703	1	THRU 25	14	21	
704	1	THRU 25	14	21	
705	1	THRU 25	14	21	
706	1	THRU 25	14	21	
707	1	THRU 25	14	21	
708	1	THRU 25	14	21	
709	1	THRU 25	14	21	
710	1	THRU 25	14	21	
711	1	THRU 25	14	21	
712	1	THRU 25	14	21	
713	1	THRU 25	14	21	
714	1	THRU 25	14	21	
715	1	THRU 25	14	21	
716	1	THRU 25	14	21	
717	1	THRU 25	14	21	
718	1	THRU 25	14	21	
719	1	THRU 25	14	21	
720	1	THRU 25	14	21	
721	1	THRU 25	14	21	
722	1	THRU 25	14	21	
723	1	THRU 25	14	21	
724	1	THRU 25	14	21	
725	1	THRU 25	14	21	
726	1	THRU 25	14	21	
727	1	THRU 25	14	21	
728	1	THRU 25	14	21	
729	1	THRU 25	14	21	
730	1	THRU 25	14	21	
731	1	THRU 25	14	21	
732	1	THRU 25	14	21	
733	1	THRU 25	14	21	
734	1	THRU 25	14	21	
735	1	THRU 25	14	21	
736	1	THRU 25	14	21	
737	1	THRU 25	14	21	
738	1	THRU 25	14	21	
739	1	THRU 25	14	21	
740	1	THRU 25	14	21	
741	1	THRU 25	14	21	
742	1	THRU 25	14	21	
743	1	THRU 25	14	21	
744	1	THRU 25	14	21	
745	1	THRU 25	14	21	
746	1	THRU 25	14	21	
747	1	THRU 25	14	21	
748	1	THRU 25	14	21	
749	1	THRU 25	14	21	
750	1	THRU 25	14	21	
751	1	THRU 25	14	21	
752	1	THRU 25	14	21	
753	1	THRU 25	14	21	
754	1	THRU 25	14	21	
755	1	THRU 25	14	21	
756	1	THRU 25	14	21	
757	1	THRU 25	14	21	
758	1	THRU 25	14	21	
759	1	THRU 25	14	21	
760	1	THRU 25	14	21	
761	1	THRU 25	14	21	
762	1	THRU 25	14	21	
763	1	THRU 25	14	21	
764	1	THRU 25	14	21	
765	1	THRU 25	14	21	
766	1	THRU 25	14	21	
767	1	THRU 25	14	21	
768	1	THRU 25	14	21	
769	1	THRU 25	14	21	
770	1	THRU 25	14	21	
771	1	THRU 25	14	21	
772	1	THRU 25	14	21	
773	1	THRU 25	14	21	
774	1	THRU 25	14	21	
775	1	THRU 25	14	21	
776	1	THRU 25	14	21	
777	1	THRU 25	14	21	
778	1	THRU 25	14	21	
779	1	THRU 25	14	21	
780	1	THRU 25	14	21	
781	1	THRU 25	14	21	
782	1	THRU 25	14	21	
783	1	THRU 25	14	21	
784	1	THRU 25	14	21	
785	1	THRU 25	14	21	
786	1	THRU 25	14	21	
787	1	THRU 25	14	21	
788	1	THRU 25	14	21	
789	1	THRU 25	14	21	
790	1	THRU 25	14	21	
791	1	THRU 25	14	21	
792	1	THRU 25	14	21	
793	1	THRU 25	14	21	
794	1	THRU 25	14	21	
795	1	THRU 25	14	21	
796	1	THRU 25	14	21	
797	1	THRU 25	14	21	
798	1	THRU 25	14	21	
799	1	THRU 25	14	21	
800	1	THRU 25	14	21	

VOID



SAN DIEGO COUNTY ASSESSOR'S MAP
678-68
SHT 3 OF 6
1" = 100'
10/12/2017 JGD

1* PRIVATE ST
3* REMAINDER OF
LOT AW IS SHOWN
ON PG 68 SHT 4

SHT 2

LOT 1 IS
ASSESSED
ON PG 68
SHT 1

10/11/2017 JGD

Drawn: 9/29/12 By: MGC From: 678-220

CHANGES	NEW	REV	DATE	BY	REASON
687	1	THRU 25	13	22	
688	1	THRU 25	14	21	
689	1	THRU 25	14	21	
690	1	THRU 25	14	21	
691	1	THRU 25	14	21	
692	1	THRU 25	14	21	
693	1	THRU 25	14	21	
694	1	THRU 25	14	21	
695	1	THRU 25	14	21	
696	1	THRU 25	14	21	
697	1	THRU 25	14	21	
698	1	THRU 25	14	21	
699	1	THRU 25	14	21	
700	1	THRU 25	14	21	
701	1	THRU 25	14	21	
702	1	THRU 25	14	21	
703	1	THRU 25	14	21	
704	1	THRU 25	14	21	
705	1	THRU 25	14	21	
706	1	THRU 25	14	21	
707	1	THRU 25	14	21	
708	1	THRU 25	14	21	
709	1	THRU 25	14	21	
710	1	THRU 25	14	21	
711	1	THRU 25	14	21	
712	1	THRU 25	14	21	
713	1	THRU 25	14	21	
714	1	THRU 25	14	21	
715	1	THRU 25	14	21	
716	1	THRU 25	14	21	
717	1	THRU 25	14	21	
718	1	THRU 25	14	21	
719	1	THRU 25	14	21	
720	1	THRU 25	14	21	
721	1	THRU 25	14	21	
722	1	THRU 25	14	21	
723	1	THRU 25	14	21	
724	1	THRU 25	14	21	
725	1	THRU 25	14	21	
726	1	THRU 25	14	21	
727	1	THRU 25	14	21	
728	1	THRU 25	14	21	
729	1	THRU 25	14	21	
730	1	THRU 25	14	21	
731	1	THRU 25	14	21	
732	1	THRU 25	14	21	
733	1	THRU 25	14	21	
734	1	THRU 25	14	21	
735	1	THRU 25	14	21	
736	1	THRU 25	14	21	
737	1	THRU 25	14	21	
738	1	THRU 25	14	21	
739	1	THRU 25	14	21	
740	1	THRU 25	14	21	
741	1	THRU 25	14	21	
742	1	THRU 25	14	21	
743	1	THRU 25	14	21	
744	1	THRU 25	14	21	
745	1	THRU 25	14	21	
746	1	THRU 25	14	21	
747	1	THRU 25	14	21	
748	1	THRU 25	14	21	
749	1	THRU 25	14	21	
750	1	THRU 25	14	21	
751	1	THRU 25	14	21	
752	1	THRU 25	14	21	
753	1	THRU 25	14	21	
754	1	THRU 25	14	21	
755	1	THRU 25	14	21	
756	1	THRU 25	14	21	
757	1	THRU 25	14	21	
758	1	THRU 25	14	21	
759	1	THRU 25	14	21	
760	1	THRU 25	14	21	
761	1	THRU 25	14	21	
762	1	THRU 25	14	21	
763	1	THRU 25	14	21	
764	1	THRU 25	14	21	
765	1	THRU 25	14	21	
766	1	THRU 25	14	21	
767	1	THRU 25	14	21	
768	1	THRU 25	14	21	
769	1	THRU 25	14	21	
770	1	THRU 25	14	21	
771	1	THRU 25	14	21	
772	1	THRU 25	14	21	
773	1	THRU 25	14	21	
774	1	THRU 25	14	21	
775	1	THRU 25	14	21	
776	1	THRU 25	14	21	
777	1	THRU 25	14	21	
778	1	THRU 25	14	21	
779	1	THRU 25	14	21	
780	1	THRU 25	14	21	
781	1	THRU 25	14	21	
782	1	THRU 25	14	21	
783	1	THRU 25	14	21	
784	1	THRU 25	14	21	
785	1	THRU 25	14	21	
786	1	THRU 25	14	21	
787	1	THRU 25	14	21	
788	1	THRU 25	14	21	
789	1	THRU 25	14	21	
790	1	THRU 25	14	21	
791	1	THRU 25	14	21	
792	1	THRU 25	14	21	
793	1	THRU 25	14	21	
794	1	THRU 25	14	21	
795	1	THRU 25	14	21	
796	1	THRU 25	14	21	
797	1	THRU 25	14	21	
798	1	THRU 25	14	21	
799	1	THRU 25	14	21	
800	1	THRU 25	14	21	

MAP 15950 - RESUBDIVISION OF BLACK MOUNTAIN RANCH
NORTH VILLAGE EAST UNIT NO 14 (MOTOR COURTS)
MAP 15908 - RESUBDIVISION OF BLACK MOUNTAIN RANCH NORTH UNIT NO 14
MAP 15875 - BLACK MOUNTAIN RANCH NORTH VILLAGE EAST UNIT NO 14

ROS 21909, 21912

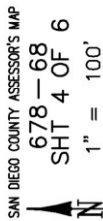


Exhibit D

Special Tax Refunding Bonds, Series 2022

Debt Service Schedule

Poway Unified School District
Improvement Area A of Community Facilities District No. 15
Series 2022 Special Tax Refunding Bonds
Debt Service Schedule

Period Ending	Series 2022 Special Tax Refunding Bonds		Semi-Annual Debt Service Payment	Annual Debt Service Payment
	Principal	Interest		
3/1/2025	\$0.00	\$129,187.50	\$129,187.50	468,375.00
9/1/2025	210,000.00	129,187.50	339,187.50	
3/1/2026	0.00	125,848.50	125,848.50	471,697.00
9/1/2026	220,000.00	125,848.50	345,848.50	
3/1/2027	0.00	122,350.50	122,350.50	489,701.00
9/1/2027	245,000.00	122,350.50	367,350.50	
3/1/2028	0.00	118,455.00	118,455.00	496,910.00
9/1/2028	260,000.00	118,455.00	378,455.00	
3/1/2029	0.00	114,321.00	114,321.00	503,642.00
9/1/2029	275,000.00	114,321.00	389,321.00	
3/1/2030	0.00	109,948.50	109,948.50	514,897.00
9/1/2030	295,000.00	109,948.50	404,948.50	
3/1/2031	0.00	105,258.00	105,258.00	525,516.00
9/1/2031	315,000.00	105,258.00	420,258.00	
3/1/2032	0.00	100,249.50	100,249.50	535,499.00
9/1/2032	335,000.00	100,249.50	435,249.50	
3/1/2033	0.00	94,923.00	94,923.00	549,846.00
9/1/2033	360,000.00	94,923.00	454,923.00	
3/1/2034	0.00	89,199.00	89,199.00	558,398.00
9/1/2034	380,000.00	89,199.00	469,199.00	
3/1/2035	0.00	83,157.00	83,157.00	566,314.00
9/1/2035	400,000.00	83,157.00	483,157.00	
3/1/2036	0.00	76,797.00	76,797.00	578,594.00
9/1/2036	425,000.00	76,797.00	501,797.00	
3/1/2037	0.00	70,039.50	70,039.50	595,079.00
9/1/2037	455,000.00	70,039.50	525,039.50	
3/1/2038	0.00	62,805.00	62,805.00	605,610.00
9/1/2038	480,000.00	62,805.00	542,805.00	
3/1/2039	0.00	55,173.00	55,173.00	615,346.00
9/1/2039	505,000.00	55,173.00	560,173.00	
3/1/2040	0.00	47,143.50	47,143.50	624,287.00
9/1/2040	530,000.00	47,143.50	577,143.50	
3/1/2041	0.00	38,716.50	38,716.50	637,433.00
9/1/2041	560,000.00	38,716.50	598,716.50	
3/1/2042	0.00	29,812.50	29,812.50	649,625.00
9/1/2042	590,000.00	29,812.50	619,812.50	
3/1/2043	0.00	20,431.50	20,431.50	665,863.00
9/1/2043	625,000.00	20,431.50	645,431.50	
3/1/2044	0.00	10,494.00	10,494.00	680,988.00
9/1/2044	660,000.00	10,494.00	670,494.00	
Total	\$8,125,000.00	\$3,208,620.00	\$11,333,620.00	\$11,333,620.00

Exhibit E

Delinquent Annual Special Tax Report



Fixed Charge Special Assessment Delinquency Report

Year End Report for Fiscal Year 2024/2025

Improvement Area A of Poway Unified School District Community Facilities District No. 15



Summary

Year End

Total Taxes Due June 30, 2025	\$670,122.10
Amount Paid	\$661,687.74
Amount Remaining to be Collected	\$8,434.36
Number of Parcels Delinquent	3
Delinquency Rate	1.26%

Foreclosure

CFD Subject to Foreclosure Covenant:	Yes
Foreclosure Notification Date	October 1st
Foreclosure Determination Date	November 15th
Foreclosure Commencement Date	December 30th

Foreclosure Qualification

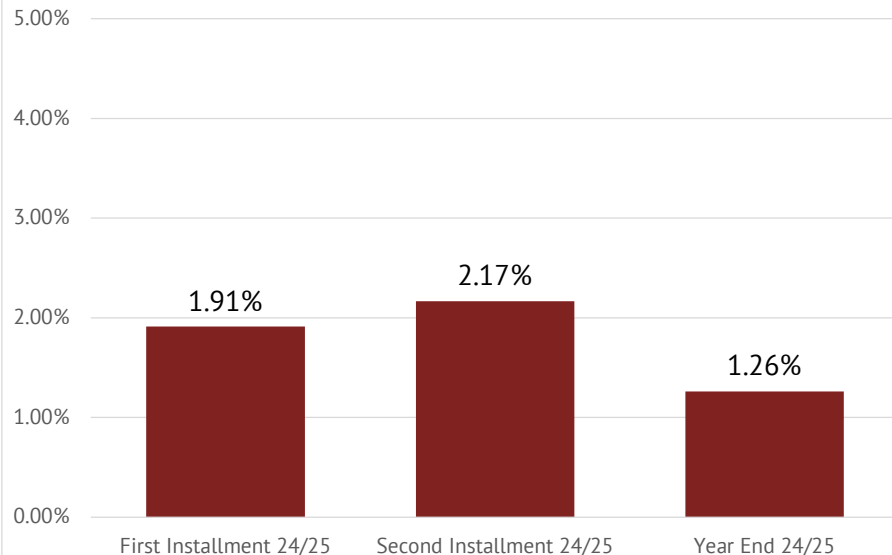
Individual Parcel Delinquency	\$7,500
Individual Owner Multiple Parcels Delinquency	\$15,000
Individual Parcels Semi-Annual Installments	N/A
Aggregate Delinquency Rate	5%

Parcels Qualifying for Foreclosure

Parcels Exceeding Individual Foreclosure Threshold	0
Parcels Exceeding CFD Aggregate	0

Pursuant to the Foreclosure Covenant in the Bond Indenture, there is no requirement to initiate Foreclosure Proceedings for aggregate delinquencies if such delinquencies do not create a draw on the Reserve Fund that would bring it below the Reserve Requirement.

Year End
Delinquency Rate Comparison





Fixed Charge Special Assessment Delinquency Report

Year End Report for Fiscal Year 2024/2025

Improvement Area A of Poway Unified School District Community Facilities District No. 15



Historical Delinquency Summary

Fiscal Year	Subject Fiscal Year					June 30, 2025	
	Aggregate Special Tax	Parcels Delinquent [1]	Amount Collected	Amount Delinquent	Delinquency Rate	Remaining Amount Delinquent	Remaining Delinquency Rate
2020/2021	\$619,087.00	N/A	\$600,451.00	\$18,636.00	3.01%	\$0.00	0.00%
2021/2022	631,468.00	N/A	618,545.00	12,923.00	2.05%	0.00	0.00%
2022/2023	644,096.04	2	639,658.05	4,437.99	0.69%	0.00	0.00%
2023/2024	656,983.06	0	656,983.06	0.00	0.00%	0.00	0.00%
2024/2025	670,122.10	3	661,687.74	8,434.36	1.26%	8,434.36	1.26%

[1] Information not provided by previous administrator for Fiscal Years 2020/2021 through 2021/2022.

Historical Delinquency Rate

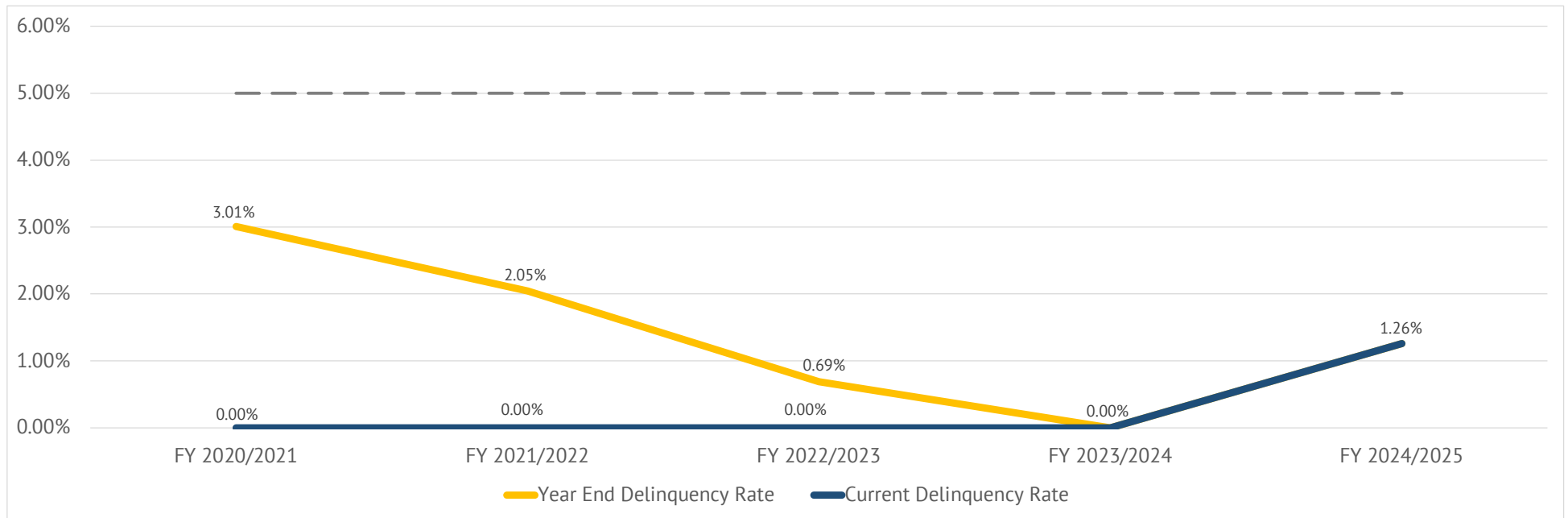


Exhibit F

Summary of Transactions for Fiscal Agent Accounts

Fund: CFD No. 15 Improvement Area A
Subfund: 7150867 - CFD No. 15 IA A Custodial Account

Date	Interest	Deposits	Transfers In	Transfers Out	Expenditures	Balance	Payee	Reference	Description
07-01-2024	\$402.10	\$4,154.84	\$0.00	\$0.00	\$0.00	\$4,556.94			BEGINNING BALANCE
07-01-2024	\$18.54					\$4,575.48		Interest	Interest Earnings
08-01-2024	\$19.27					\$4,594.75		Interest	Interest Earnings
09-03-2024	\$19.35					\$4,614.10		Interest	Interest Earnings
10-01-2024	\$18.20					\$4,632.30		Interest	Interest Earnings
11-01-2024	\$17.73					\$4,650.03		Interest	Interest Earnings
12-02-2024	\$16.49					\$4,666.52		Interest	Interest Earnings
01-02-2025	\$16.60					\$4,683.12		Interest	Interest Earnings
02-03-2025	\$16.00					\$4,699.12		Interest	Interest Earnings
03-03-2025	\$14.43					\$4,713.55		Interest	Interest Earnings
04-01-2025	\$15.90					\$4,729.45		Interest	Interest Earnings
05-01-2025	\$15.44					\$4,744.89		Interest	Interest Earnings
06-02-2025	\$15.87					\$4,760.76		Interest	Interest Earnings
	\$203.82	\$0.00	\$0.00	\$0.00	\$0.00	\$203.82			DATE RANGE BALANCE
Subfund Total	\$605.92	\$4,154.84	\$0.00	\$0.00	\$0.00	\$4,760.76	Total for 7150867 - CFD No. 15 IA A Custodial Account		

Subfund: 7150907A - Special Tax Fund (Series 2014)

Date	Interest	Deposits	Transfers In	Transfers Out	Expenditures	Balance	Payee	Reference	Description
07-01-2024	\$5,676.82	\$2,421,517.90	\$0.00	(\$2,427,145.94)	\$0.00	\$48.78			BEGINNING BALANCE
07-01-2024	\$0.20					\$48.98		Interest	Interest Earnings
08-01-2024	\$0.21					\$49.19		Interest	Interest Earnings
09-03-2024	\$0.21					\$49.40		Interest	Interest Earnings
09-11-2024				(\$49.40)		\$0.00		Transfer Out	Transfer To 7150950A Special Tax Fund (Series 2022)
10-01-2024	\$0.07					\$0.07		Interest	Interest Earnings
12-19-2024				(\$0.07)		\$0.00		Transfer Out	Transfer To 7150950A Spec Tax Fund
	\$0.69	\$0.00	\$0.00	(\$49.47)	\$0.00	(\$48.78)			DATE RANGE BALANCE
Subfund Total	\$5,677.51	\$2,421,517.90	\$0.00	(\$2,427,195.41)	\$0.00	\$0.00	Total for 7150907A - Special Tax Fund (Series 2014)		

Subfund: 7150907B - Interest Account (Series 2014)

Date	Interest	Deposits	Transfers In	Transfers Out	Expenditures	Balance	Payee	Reference	Description
07-01-2024	\$58.81	\$0.02	\$1,424,887.03	(\$92.63)	(\$1,424,853.23)	\$0.00			BEGINNING BALANCE
	\$0.00	\$0.00	\$0.00	\$0.00	\$0.00	\$0.00			DATE RANGE BALANCE
Subfund Total	\$58.81	\$0.02	\$1,424,887.03	(\$92.63)	(\$1,424,853.23)	\$0.00	Total for 7150907B - Interest Account (Series 2014)		

Subfund: 7150907C - Principal Account (Series 2014)

Date	Interest	Deposits	Transfers In	Transfers Out	Expenditures	Balance	Payee	Reference	Description
07-01-2024	\$0.00	\$0.00	\$9,935,400.00	\$0.00	(\$9,935,400.00)	\$0.00			BEGINNING BALANCE
	\$0.00	\$0.00	\$0.00	\$0.00	\$0.00	\$0.00			DATE RANGE BALANCE
Subfund Total	\$0.00	\$0.00	\$9,935,400.00	\$0.00	(\$9,935,400.00)	\$0.00	Total for 7150907C - Principal Account (Series 2014)		

Subfund: 7150907D - Reserve Fund (Series 2014)

Date	Interest	Deposits	Transfers In	Transfers Out	Expenditures	Balance	Payee	Reference	Description
07-01-2024	\$10,712.70	\$842,484.44	\$2,916.38	(\$856,065.94)	\$0.00	\$47.58			BEGINNING BALANCE
07-01-2024	\$0.19					\$47.77		Interest	Interest Earnings
08-01-2024	\$0.20					\$47.97		Interest	Interest Earnings
09-03-2024	\$0.20					\$48.17		Interest	Interest Earnings
09-11-2024				(\$48.17)		\$0.00		Transfer Out	Transfer To 7150950B Interest Account (Series 2022)
10-01-2024	\$0.07					\$0.07		Interest	Interest Earnings
12-19-2024				(\$0.07)		\$0.00		Transfer Out	Transfer To 7150950B Interest
	\$0.66	\$0.00	\$0.00	(\$48.24)	\$0.00	(\$47.58)			DATE RANGE BALANCE
Subfund Total	\$10,713.36	\$842,484.44	\$2,916.38	(\$856,114.18)	\$0.00	\$0.00	Total for 7150907D - Reserve Fund (Series 2014)		

Subfund: 7150907I - Administrative Expense Fund (Series 2014)

Date	Interest	Deposits	Transfers In	Transfers Out	Expenditures	Balance	Payee	Reference	Description
07-01-2024	\$353.12	\$27,432.98	\$65,914.46	(\$42,269.00)	(\$51,427.13)	\$4.43			BEGINNING BALANCE
07-01-2024	\$0.02					\$4.45		Interest	Interest Earnings
08-01-2024	\$0.02					\$4.47		Interest	Interest Earnings
09-03-2024	\$0.02					\$4.49		Interest	Interest Earnings
09-11-2024				(\$4.49)		\$0.00		Transfer Out	Transfer To 7150950B Interest Account (Series 2022)
10-01-2024	\$0.01					\$0.01		Interest	Interest Earnings
12-19-2024				(\$0.01)		\$0.00		Transfer Out	Transfer To 7150950B Interest
	\$0.07	\$0.00	\$0.00	(\$4.50)	\$0.00	(\$4.43)			DATE RANGE BALANCE
Subfund Total	\$353.19	\$27,432.98	\$65,914.46	(\$42,273.50)	(\$51,427.13)	\$0.00	Total for 7150907I - Administrative Expense Fund (Series 2014)		

Subfund: 7150907R - Redemption Fund (Series 2014)

Date	Interest	Deposits	Transfers In	Transfers Out	Expenditures	Balance	Payee	Reference	Description
07-01-2024	\$2.57	\$204.64	\$0.00	(\$207.20)	\$0.00	\$0.01			BEGINNING BALANCE
09-11-2024				(\$0.01)		\$0.00		Transfer Out	Transfer To 7150950B Interest Account (Series 2022)
	\$0.00	\$0.00	\$0.00	(\$0.01)	\$0.00	(\$0.01)			DATE RANGE BALANCE
Subfund Total	\$2.57	\$204.64	\$0.00	(\$207.21)	\$0.00	\$0.00	Total for 7150907R - Redemption Fund (Series 2014)		

Subfund: 7150950A - Special Tax Fund (Series 2022)

Date	Interest	Deposits	Transfers In	Transfers Out	Expenditures	Balance	Payee	Reference	Description
07-01-2024	\$29,719.46	\$1,382,873.31	\$7,052.82	(\$688,991.53)	\$0.00	\$730,654.06			BEGINNING BALANCE
07-01-2024	\$2,972.28					\$733,626.34		Interest	Interest Earnings
07-22-2024		\$1,794.39				\$735,420.73		Deposit	Special Tax Deposit
08-01-2024	\$3,092.74					\$738,513.47		Interest	Interest Earnings
09-03-2024	\$3,109.62					\$741,623.09		Interest	Interest Earnings
09-03-2024				(\$190,000.00)		\$551,623.09		Transfer Out	Transfer To 7150950C Principal Account
09-03-2024				(\$132,208.50)		\$419,414.59		Transfer Out	Transfer To 7150950B Interest Account
09-11-2024			\$49.40			\$419,463.99		Transfer In	Transfer From 7150907A Special Tax Fund
10-01-2024	\$1,741.38					\$421,205.37		Interest	Interest Earnings
10-16-2024		\$4,514.73				\$425,720.10		Deposit	Special Tax Deposit
11-01-2024	\$1,620.69					\$427,340.79		Interest	Interest Earnings

Subfund: 7150950A - Special Tax Fund (Series 2022)

Date	Interest	Deposits	Transfers In	Transfers Out	Expenditures	Balance	Payee	Reference	Description
11-20-2024		\$88,423.67				\$515,764.46		Deposit	Special Tax Deposit
12-02-2024	\$1,629.02					\$517,393.48		Interest	Interest Earnings
12-16-2024		\$112,991.66				\$630,385.14		Deposit	Special Tax Deposit
12-19-2024			\$0.07			\$630,385.21		Transfer In	Transfer From 7150907A Special Tax Fund (Series 2014)
01-02-2025	\$2,044.92					\$632,430.13		Interest	Interest Earnings
01-15-2025		\$164,686.78				\$797,116.91		Deposit	Special Tax Deposit
01-17-2025				(\$23,779.54)		\$773,337.37		Transfer Out	Transfer To 7150950I Administrative Expense Fund
02-03-2025	\$2,428.73					\$775,766.10		Interest	Interest Earnings
02-19-2025		\$28,472.52				\$804,238.62		Deposit	Special Tax Deposit
03-03-2025	\$2,413.63					\$806,652.25		Interest	Interest Earnings
03-03-2025				(\$125,458.80)		\$681,193.45		Transfer Out	Transfer To 7150950B Interest Account
03-19-2025		\$26,969.75				\$708,163.20		Deposit	Special Tax Deposit
04-01-2025	\$2,362.78					\$710,525.98		Interest	Interest Earnings
04-21-2025		\$204,922.21				\$915,448.19		Deposit	Special Tax Deposit
05-01-2025	\$2,542.37					\$917,990.56		Interest	Interest Earnings
05-14-2025		\$26,618.13				\$944,608.69		Deposit	Special Tax Deposit
06-02-2025	\$3,122.69					\$947,731.38		Interest	Interest Earnings
06-18-2025		\$1,785.38				\$949,516.76		Deposit	Special Tax Deposit
	\$29,080.85	\$661,179.22	\$49.47	(\$471,446.84)	\$0.00	\$218,862.70			DATE RANGE BALANCE
Subfund Total	\$58,800.31	\$2,044,052.53	\$7,102.29	(\$1,160,438.37)	\$0.00	\$949,516.76	Total for 7150950A - Special Tax Fund (Series 2022)		

Subfund: 7150950B - Interest Account (Series 2022)

Date	Interest	Deposits	Transfers In	Transfers Out	Expenditures	Balance	Payee	Reference	Description
07-01-2024	\$335.55	\$390.95	\$467,273.51	\$0.00	(\$466,132.79)	\$1,867.22			BEGINNING BALANCE
07-01-2024	\$7.60					\$1,874.82		Interest	Interest Earnings
08-01-2024	\$7.90					\$1,882.72		Interest	Interest Earnings
09-03-2024					(\$132,208.50)	(\$130,325.78)	Cede & Company	Debt Service Interest	Debt Service Interest
09-03-2024			\$132,208.50			\$1,882.72		Transfer In	Transfer From 7150950A Special Tax Fund
09-03-2024	\$7.93					\$1,890.65		Interest	Interest Earnings
09-04-2024			\$1,718.62			\$3,609.27		Transfer In	Transfer From 7150950D Reserve Fund (Series 2022)
09-11-2024			\$0.01			\$3,609.28		Transfer In	Transfer From 7150907R Redemption Fund (Series 2014)
09-11-2024			\$48.17			\$3,657.45		Transfer In	Transfer From 7150907D Reserve Fund (Series 2014)
09-11-2024			\$4.49			\$3,661.94		Transfer In	Transfer From 7150907I Administrative Expense Fund (Series 2014)
10-01-2024	\$13.67					\$3,675.61		Interest	Interest Earnings
11-01-2024	\$14.07					\$3,689.68		Interest	Interest Earnings
12-02-2024	\$13.08					\$3,702.76		Interest	Interest Earnings
12-19-2024			\$0.01			\$3,702.77		Transfer In	Transfer From 7150907I Administrative Expense Fund (Series 2014)
12-19-2024			\$0.07			\$3,702.84		Transfer In	Transfer From 7150907D Reserve Fund (Series 2014)
01-02-2025	\$13.17					\$3,716.01		Interest	Interest Earnings
02-03-2025	\$12.69					\$3,728.70		Interest	Interest Earnings
03-03-2025					(\$129,187.50)	(\$125,458.80)	Cede & Company	Debt Service Interest	Debt Service Interest
03-03-2025			\$125,458.80			\$0.00		Transfer In	Transfer From 7150950A Special Tax Fund

Subfund: 7150950B - Interest Account (Series 2022)

Date	Interest	Deposits	Transfers In	Transfers Out	Expenditures	Balance	Payee	Reference	Description
03-03-2025			\$1,468.31			\$1,468.31		Transfer In	Transfer From 7150950D Reserve Fund
03-03-2025	\$11.45					\$1,479.76		Interest	Interest Earnings
04-01-2025	\$5.49					\$1,485.25		Interest	Interest Earnings
05-01-2025	\$4.85					\$1,490.10		Interest	Interest Earnings
06-02-2025	\$4.99					\$1,495.09		Interest	Interest Earnings
	\$116.89	\$0.00	\$260,906.98	\$0.00	(\$261,396.00)	(\$372.13)			DATE RANGE BALANCE
Subfund Total	\$452.44	\$390.95	\$728,180.49	\$0.00	(\$727,528.79)	\$1,495.09	Total for 7150950B - Interest Account (Series 2022)		

Subfund: 7150950C - Principal Account (Series 2022)

Date	Interest	Deposits	Transfers In	Transfers Out	Expenditures	Balance	Payee	Reference	Description
07-01-2024	\$0.00	\$0.00	\$180,000.00	\$0.00	(\$180,000.00)	\$0.00			BEGINNING BALANCE
09-03-2024					(\$190,000.00)	(\$190,000.00)	Cede & Company	Debt Service Principal	Debt Service Principal
09-03-2024			\$190,000.00			\$0.00		Transfer In	Transfer From 7150950A Special Tax Fund
	\$0.00	\$0.00	\$190,000.00	\$0.00	(\$190,000.00)	\$0.00			DATE RANGE BALANCE
Subfund Total	\$0.00	\$0.00	\$370,000.00	\$0.00	(\$370,000.00)	\$0.00	Total for 7150950C - Principal Account (Series 2022)		

Subfund: 7150950D - Reserve Fund (Series 2022)

Date	Interest	Deposits	Transfers In	Transfers Out	Expenditures	Balance	Payee	Reference	Description
07-01-2024	\$5,490.48	\$68,098.80	\$0.00	(\$4,636.73)	\$0.00	\$68,952.55			BEGINNING BALANCE
07-01-2024	\$280.50					\$69,233.05		Interest	Interest Earnings
08-01-2024	\$291.63					\$69,524.68		Interest	Interest Earnings
09-03-2024	\$292.74					\$69,817.42		Interest	Interest Earnings
09-04-2024				(\$1,718.62)		\$68,098.80		Transfer Out	Transfer To 7150950B Interest Account
10-01-2024	\$269.28					\$68,368.08		Interest	Interest Earnings
11-01-2024	\$261.63					\$68,629.71		Interest	Interest Earnings
12-02-2024	\$243.38					\$68,873.09		Interest	Interest Earnings
01-02-2025	\$244.95					\$69,118.04		Interest	Interest Earnings
02-03-2025	\$236.08					\$69,354.12		Interest	Interest Earnings
03-03-2025	\$212.99					\$69,567.11		Interest	Interest Earnings
03-03-2025				(\$1,468.31)		\$68,098.80		Transfer Out	Transfer To 7150950B Interest Account
04-01-2025	\$229.97					\$68,328.77		Interest	Interest Earnings
05-01-2025	\$223.09					\$68,551.86		Interest	Interest Earnings
06-02-2025	\$229.34					\$68,781.20		Interest	Interest Earnings
	\$3,015.58	\$0.00	\$0.00	(\$3,186.93)	\$0.00	(\$171.35)			DATE RANGE BALANCE
Subfund Total	\$8,506.06	\$68,098.80	\$0.00	(\$7,823.66)	\$0.00	\$68,781.20	Total for 7150950D - Reserve Fund (Series 2022)		

Subfund: 7150950I - Administrative Expense Fund (Series 2022)

Date	Interest	Deposits	Transfers In	Transfers Out	Expenditures	Balance	Payee	Reference	Description
07-01-2024	\$2,864.17	\$42,259.17	\$46,169.42	\$0.00	(\$27,151.40)	\$64,141.36			BEGINNING BALANCE
07-01-2024	\$260.92					\$64,402.28		Interest	Interest Earnings
08-01-2024	\$271.29					\$64,673.57		Interest	Interest Earnings
08-20-2024					(\$14,000.00)	\$50,673.57	Poway Unified School District	Professional Services	Req# 950I-2425-0001 Inv# 2023-2024 Memo
09-03-2024	\$249.50					\$50,923.07		Interest	Interest Earnings

Subfund: 7150950I - Administrative Expense Fund (Series 2022)

Date	Interest	Deposits	Transfers In	Transfers Out	Expenditures	Balance	Payee	Reference	Description
10-01-2024	\$200.83					\$51,123.90		Interest	Interest Earnings
10-09-2024					(\$1,950.00)	\$49,173.90	Zions First National	Professional Services	Req. No. 950I-2425-0003 Fiscal Agent Annual Admin Fee June 2024 - May 2025 Invoice No. 12293
10-09-2024					(\$500.00)	\$48,673.90	Zions First National	Professional Services	Req. No. 950I-2425-0002 Custodial Annual Admin Fee June 2024 - May 2025 Invoice No. 12283
11-01-2024	\$188.71					\$48,862.61		Interest	Interest Earnings
12-02-2024	\$173.28					\$49,035.89		Interest	Interest Earnings
01-02-2025	\$174.40					\$49,210.29		Interest	Interest Earnings
01-17-2025			\$23,779.54			\$72,989.83		Transfer In	Transfer From 7150950A Special Tax Fund
02-03-2025	\$207.32					\$73,197.15		Interest	Interest Earnings
03-03-2025	\$224.80					\$73,421.95		Interest	Interest Earnings
04-01-2025	\$247.60					\$73,669.55		Interest	Interest Earnings
04-10-2025					(\$30,000.00)	\$43,669.55	Poway Unified School District	Professional Services	Req#950I-2425-0004 dtd 04-09-25 Inv#2024-2025 Memo dtd 04-08-25-2024-2025 Memo
05-01-2025	\$172.06					\$43,841.61		Interest	Interest Earnings
06-02-2025	\$146.67					\$43,988.28		Interest	Interest Earnings
	\$2,517.38	\$0.00	\$23,779.54	\$0.00	(\$46,450.00)	(\$20,153.08)			DATE RANGE BALANCE
Subfund Total	\$5,381.55	\$42,259.17	\$69,948.96	\$0.00	(\$73,601.40)	\$43,988.28	Total for 7150950I - Administrative Expense Fund (Series 2022)		

Subfund: 7150950J - Cost of Issuance Fund (Series 2022)

Date	Interest	Deposits	Transfers In	Transfers Out	Expenditures	Balance	Payee	Reference	Description
07-01-2024	\$147.46	\$238,101.81	\$0.00	(\$7,052.82)	(\$231,196.45)	\$0.00			BEGINNING BALANCE
	\$0.00	\$0.00	\$0.00	\$0.00	\$0.00	\$0.00			DATE RANGE BALANCE
Subfund Total	\$147.46	\$238,101.81	\$0.00	(\$7,052.82)	(\$231,196.45)	\$0.00	Total for 7150950J - Cost of Issuance Fund (Series 2022)		

Subfund: 7150951Z - Escrow

Date	Interest	Deposits	Transfers In	Transfers Out	Expenditures	Balance	Payee	Reference	Description
07-01-2024	\$20,971.18	\$8,188,799.39	\$1,587,038.82	(\$9,796,809.39)	\$0.00	\$0.00			BEGINNING BALANCE
	\$0.00	\$0.00	\$0.00	\$0.00	\$0.00	\$0.00			DATE RANGE BALANCE
Subfund Total	\$20,971.18	\$8,188,799.39	\$1,587,038.82	(\$9,796,809.39)	\$0.00	\$0.00	Total for 7150951Z - Escrow		
Fund Total	\$111,670.36	\$13,877,497.47	\$14,191,388.43	(\$14,298,007.17)	(\$12,814,007.00)	\$1,068,542.09	Total for CFD No. 15 Improvement Area A		
Grand Total	\$111,670.36	\$13,877,497.47	\$14,191,388.43	(\$14,298,007.17)	(\$12,814,007.00)	\$1,068,542.09	Grand Total for Selected Funds/SubFunds		

Exhibit G

Annual Special Tax Roll for Fiscal Year 2025/2026

Poway Unified School District
Community Facilities District No. 15 Improvement Area A
Fiscal Year 2025/2026 Special Tax Roll

Tract	Lot	Assessor's Parcel Number	Maximum Special Tax	Assigned Special Tax
15950	1	678-681-19-00	\$3,367.06	\$3,367.06
15950	2	678-681-20-00	\$2,703.22	\$2,703.22
15950	3	678-681-21-00	\$3,139.80	\$3,139.80
15950	4	678-681-22-00	\$3,367.06	\$3,367.06
15950	5	678-681-23-00	\$2,703.22	\$2,703.22
15950	6	678-681-24-00	\$3,139.80	\$3,139.80
15950	7	678-681-25-00	\$3,367.06	\$3,367.06
15950	8	678-681-26-00	\$2,703.22	\$2,703.22
15950	9	678-681-27-00	\$3,139.80	\$3,139.80
15950	10	678-681-28-00	\$3,367.06	\$3,367.06
15950	11	678-681-29-00	\$2,703.22	\$2,703.22
15950	12	678-681-30-00	\$3,139.80	\$3,139.80
15950	13	678-681-31-00	\$3,367.06	\$3,367.06
15950	14	678-681-32-00	\$2,703.22	\$2,703.22
15950	15	678-681-33-00	\$3,139.80	\$3,139.80
15950	16	678-681-34-00	\$3,367.06	\$3,367.06
15950	17	678-681-35-00	\$2,703.22	\$2,703.22
15950	18	678-681-36-00	\$3,139.80	\$3,139.80
15950	19	678-681-37-00	\$3,367.06	\$3,367.06
15950	20	678-681-38-00	\$2,703.22	\$2,703.22
15950	21	678-681-39-00	\$3,367.06	\$3,367.06
15950	22	678-681-40-00	\$3,139.80	\$3,139.80
15950	23	678-681-41-00	\$2,703.22	\$2,703.22
15950	24	678-681-42-00	\$3,367.06	\$3,367.06
15950	25	678-681-43-00	\$3,139.80	\$3,139.80
15950	26	678-681-44-00	\$2,703.22	\$2,703.22
15950	27	678-681-45-00	\$3,367.06	\$3,367.06
15950	28	678-681-46-00	\$3,139.80	\$3,139.80
15950	29	678-681-47-00	\$2,703.22	\$2,703.22
15950	30	678-681-48-00	\$3,367.06	\$3,367.06
15950	31	678-681-49-00	\$3,139.80	\$3,139.80
15950	32	678-681-50-00	\$2,703.22	\$2,703.22
15950	33	678-681-51-00	\$3,367.06	\$3,367.06
15950	34	678-681-52-00	\$3,139.80	\$3,139.80
15950	35	678-681-53-00	\$2,703.22	\$2,703.22
15950	36	678-681-54-00	\$3,367.06	\$3,367.06
15950	37	678-681-55-00	\$3,139.80	\$3,139.80
15950	38	678-681-56-00	\$2,703.22	\$2,703.22
15950	39	678-681-57-00	\$3,367.06	\$3,367.06
15950	40	678-681-58-00	\$3,367.06	\$3,367.06
15950	41	678-681-59-00	\$2,703.22	\$2,703.22
15950	42	678-681-60-00	\$3,367.06	\$3,367.06

Poway Unified School District
Community Facilities District No. 15 Improvement Area A
Fiscal Year 2025/2026 Special Tax Roll

Tract	Lot	Assessor's Parcel Number	Maximum Special Tax	Assigned Special Tax
15950	A	678-681-61-00	\$0.00	\$0.00
15950	B	678-681-62-00	\$0.00	\$0.00
15919	29	678-681-64-01	\$2,703.22	\$2,703.22
15919	29	678-681-64-02	\$2,469.96	\$2,469.96
15919	29	678-681-64-03	\$2,469.96	\$2,469.96
15919	29	678-681-64-04	\$2,469.96	\$2,469.96
15919	29	678-681-64-05	\$2,469.96	\$2,469.96
15919	29	678-681-64-06	\$2,703.22	\$2,703.22
15919	29	678-681-65-01	\$2,703.22	\$2,703.22
15919	29	678-681-65-02	\$2,469.96	\$2,469.96
15919	29	678-681-65-03	\$2,469.96	\$2,469.96
15919	29	678-681-65-04	\$2,469.96	\$2,469.96
15919	29	678-681-65-05	\$2,469.96	\$2,469.96
15919	29	678-681-65-06	\$2,703.22	\$2,703.22
15919	29	678-681-66-01	\$2,703.22	\$2,703.22
15919	29	678-681-66-02	\$2,469.96	\$2,469.96
15919	29	678-681-66-03	\$2,598.54	\$2,598.54
15919	29	678-681-66-04	\$2,469.96	\$2,469.96
15919	29	678-681-66-05	\$2,469.96	\$2,469.96
15919	29	678-681-66-06	\$2,703.22	\$2,703.22
15919	29	678-681-67-01	\$2,703.22	\$2,703.22
15919	29	678-681-67-02	\$2,469.96	\$2,469.96
15919	29	678-681-67-03	\$2,469.96	\$2,469.96
15919	29	678-681-67-04	\$2,469.96	\$2,469.96
15919	29	678-681-67-05	\$2,703.22	\$2,703.22
15919	29	678-681-68-01	\$2,703.22	\$2,703.22
15919	29	678-681-68-02	\$2,469.96	\$2,469.96
15919	29	678-681-68-03	\$2,469.96	\$2,469.96
15919	29	678-681-68-04	\$2,703.22	\$2,703.22
15919	29	678-681-69-01	\$2,703.22	\$2,703.22
15919	29	678-681-69-02	\$2,469.96	\$2,469.96
15919	29	678-681-69-03	\$2,598.54	\$2,598.54
15919	29	678-681-69-04	\$2,469.96	\$2,469.96
15919	29	678-681-69-05	\$2,469.96	\$2,469.96
15919	29	678-681-69-06	\$2,703.22	\$2,703.22
15919	29	678-681-71-01	\$2,703.22	\$2,703.22
15919	29	678-681-71-02	\$2,469.96	\$2,469.96
15919	29	678-681-71-03	\$2,469.96	\$2,469.96
15919	29	678-681-71-04	\$2,469.96	\$2,469.96
15919	29	678-681-71-05	\$2,469.96	\$2,469.96
15919	29	678-681-71-06	\$2,703.22	\$2,703.22
15919	29	678-681-71-07	\$2,703.22	\$2,703.22

Poway Unified School District
Community Facilities District No. 15 Improvement Area A
Fiscal Year 2025/2026 Special Tax Roll

Tract	Lot	Assessor's Parcel Number	Maximum Special Tax	Assigned Special Tax
15919	29	678-681-71-08	\$2,469.96	\$2,469.96
15919	29	678-681-71-09	\$2,469.96	\$2,469.96
15919	29	678-681-71-10	\$2,469.96	\$2,469.96
15919	29	678-681-71-11	\$2,469.96	\$2,469.96
15919	29	678-681-71-12	\$2,703.22	\$2,703.22
15875	50	678-682-02-00	\$3,773.74	\$3,773.74
15875	51	678-682-03-00	\$3,773.74	\$3,773.74
15875	52	678-682-04-00	\$3,773.74	\$3,773.74
15875	53	678-682-05-00	\$3,367.06	\$3,367.06
15875	54	678-682-06-00	\$3,773.74	\$3,773.74
15875	55	678-682-07-00	\$3,773.74	\$3,773.74
15875	56	678-682-08-00	\$3,773.74	\$3,773.74
15875	57	678-682-09-00	\$3,367.06	\$3,367.06
15875	58	678-682-10-00	\$3,773.74	\$3,773.74
15875	59	678-682-11-00	\$3,773.74	\$3,773.74
15875	60	678-682-12-00	\$3,367.06	\$3,367.06
15875	61	678-682-13-00	\$3,773.74	\$3,773.74
15875	62	678-682-14-00	\$3,773.74	\$3,773.74
15875	63	678-682-15-00	\$3,367.06	\$3,367.06
15875	64	678-682-16-00	\$3,773.74	\$3,773.74
15875	65	678-682-17-00	\$3,773.74	\$3,773.74
15875	66	678-682-18-00	\$3,773.74	\$3,773.74
15875	67	678-682-19-00	\$3,367.06	\$3,367.06
15875	68	678-682-20-00	\$3,773.74	\$3,773.74
15875	69	678-682-21-00	\$3,773.74	\$3,773.74
15875	70	678-682-22-00	\$3,773.74	\$3,773.74
15875	71	678-682-23-00	\$3,773.74	\$3,773.74
15875	72	678-682-24-00	\$3,367.06	\$3,367.06
15875	73	678-682-25-00	\$3,773.74	\$3,773.74
15875	74	678-682-26-00	\$3,773.74	\$3,773.74
15875	75	678-682-27-00	\$3,367.06	\$3,367.06
15875	76	678-682-28-00	\$3,773.74	\$3,773.74
15875	77	678-682-29-00	\$3,773.74	\$3,773.74
15875	78	678-682-30-00	\$3,773.74	\$3,773.74
15875	79	678-682-31-00	\$3,367.06	\$3,367.06
15875	80	678-682-32-00	\$3,773.74	\$3,773.74
15875	S	678-682-49-00	\$0.00	\$0.00
15875	T	678-682-50-00	\$0.00	\$0.00
15875	U	678-682-51-00	\$0.00	\$0.00
15875	W	678-682-53-00	\$0.00	\$0.00
15875	X	678-682-54-00	\$0.00	\$0.00
15875	Y	678-682-55-00	\$0.00	\$0.00

Poway Unified School District
Community Facilities District No. 15 Improvement Area A
Fiscal Year 2025/2026 Special Tax Roll

Tract	Lot	Assessor's Parcel Number	Maximum Special Tax	Assigned Special Tax
15875	Z	678-682-56-00	\$0.00	\$0.00
15875	AA	678-682-57-00	\$0.00	\$0.00
15875	AB	678-682-58-00	\$0.00	\$0.00
15875	AC	678-682-59-00	\$0.00	\$0.00
15875	AD	678-682-60-00	\$0.00	\$0.00
15875	AE	678-682-61-00	\$0.00	\$0.00
15875	AF	678-682-62-00	\$0.00	\$0.00
15875	AG	678-682-63-00	\$0.00	\$0.00
15875	AS	678-682-64-00	\$0.00	\$0.00
15875	AW	678-682-65-00	\$0.00	\$0.00
15875	AX	678-682-66-00	\$0.00	\$0.00
15875	AY	678-682-67-00	\$0.00	\$0.00
15908	G	678-682-82-00	\$0.00	\$0.00
15908	H	678-682-83-00	\$0.00	\$0.00
15908	D	678-682-88-00	\$0.00	\$0.00
15875	81	678-683-01-00	\$3,367.06	\$3,367.06
15875	82	678-683-02-00	\$3,773.74	\$3,773.74
15875	83	678-683-03-00	\$3,367.06	\$3,367.06
15875	84	678-683-04-00	\$3,773.74	\$3,773.74
15875	85	678-683-05-00	\$3,773.74	\$3,773.74
15875	86	678-683-06-00	\$3,773.74	\$3,773.74
15875	87	678-683-07-00	\$3,367.06	\$3,367.06
15875	88	678-683-08-00	\$3,773.74	\$3,773.74
15875	89	678-683-09-00	\$3,773.74	\$3,773.74
15875	90	678-683-10-00	\$3,773.74	\$3,773.74
15875	91	678-683-11-00	\$3,367.06	\$3,367.06
15875	92	678-683-12-00	\$3,773.74	\$3,773.74
15875	93	678-683-13-00	\$3,773.74	\$3,773.74
15875	94	678-683-14-00	\$3,773.74	\$3,773.74
15875	95	678-683-15-00	\$3,367.06	\$3,367.06
15875	96	678-683-16-00	\$3,773.74	\$3,773.74
15875	97	678-683-17-00	\$3,367.06	\$3,367.06
15875	98	678-683-18-00	\$3,773.74	\$3,773.74
15875	99	678-683-19-00	\$3,773.74	\$3,773.74
15875	100	678-683-20-00	\$3,773.74	\$3,773.74
15875	101	678-683-21-00	\$3,367.06	\$3,367.06
15875	P	678-683-41-00	\$0.00	\$0.00
15875	AH	678-683-43-00	\$0.00	\$0.00
15875	AI	678-683-44-00	\$0.00	\$0.00
15875	AJ	678-683-45-00	\$0.00	\$0.00
15875	AK	678-683-46-00	\$0.00	\$0.00
15875	AL	678-683-47-00	\$0.00	\$0.00

Poway Unified School District
Community Facilities District No. 15 Improvement Area A
Fiscal Year 2025/2026 Special Tax Roll

Tract	Lot	Assessor's Parcel Number	Maximum Special Tax	Assigned Special Tax
15875	AM	678-683-48-00	\$0.00	\$0.00
15875	AN	678-683-49-00	\$0.00	\$0.00
15875	AP	678-683-51-00	\$0.00	\$0.00
15875	AZ	678-683-52-00	\$0.00	\$0.00
15875	BA	678-683-53-00	\$0.00	\$0.00
15908	1	678-686-01-00	\$3,977.08	\$3,977.08
15908	2	678-686-02-00	\$3,642.16	\$3,642.16
15908	3	678-686-03-00	\$3,977.08	\$3,977.08
15908	4	678-686-04-00	\$3,642.16	\$3,642.16
15908	5	678-686-05-00	\$3,977.08	\$3,977.08
15908	6	678-686-06-00	\$3,642.16	\$3,642.16
15908	7	678-686-07-00	\$3,642.16	\$3,642.16
15908	8	678-686-08-00	\$3,642.16	\$3,642.16
15908	9	678-686-09-00	\$3,977.08	\$3,977.08
15908	10	678-686-10-00	\$3,642.16	\$3,642.16
15908	11	678-686-11-00	\$3,977.08	\$3,977.08
15908	12	678-686-12-00	\$3,642.16	\$3,642.16
15908	13	678-686-13-00	\$3,642.16	\$3,642.16
15908	14	678-686-14-00	\$3,977.08	\$3,977.08
15908	15	678-686-15-00	\$3,642.16	\$3,642.16
15908	16	678-686-16-00	\$3,642.16	\$3,642.16
15908	17	678-686-17-00	\$3,977.08	\$3,977.08
15908	18	678-686-18-00	\$3,642.16	\$3,642.16
15908	19	678-686-19-00	\$3,642.16	\$3,642.16
15908	20	678-686-20-00	\$3,642.16	\$3,642.16
15908	21	678-686-21-00	\$3,977.08	\$3,977.08
15908	22	678-686-22-00	\$3,977.08	\$3,977.08
15908	23	678-686-23-00	\$3,642.16	\$3,642.16
15908	24	678-686-24-00	\$3,642.16	\$3,642.16
15908	25	678-686-25-00	\$3,642.16	\$3,642.16
15908	26	678-686-26-00	\$3,977.08	\$3,977.08
15908	27	678-686-27-00	\$3,642.16	\$3,642.16
15908	28	678-686-28-00	\$3,642.16	\$3,642.16
15908	29	678-686-29-00	\$3,977.08	\$3,977.08
15908	30	678-686-30-00	\$3,642.16	\$3,642.16
15908	31	678-686-31-00	\$3,642.16	\$3,642.16
15908	32	678-686-32-00	\$3,977.08	\$3,977.08
15908	33	678-686-33-00	\$3,642.16	\$3,642.16
15908	34	678-686-34-00	\$3,642.16	\$3,642.16
15908	35	678-686-35-00	\$3,642.16	\$3,642.16
15908	36	678-686-36-00	\$3,977.08	\$3,977.08
15908	37	678-686-37-00	\$3,642.16	\$3,642.16

Poway Unified School District
Community Facilities District No. 15 Improvement Area A
Fiscal Year 2025/2026 Special Tax Roll

Tract	Lot	Assessor's Parcel Number	Maximum Special Tax	Assigned Special Tax
15908	38	678-686-38-00	\$3,642.16	\$3,642.16
15908	39	678-686-39-00	\$3,977.08	\$3,977.08
15908	40	678-686-40-00	\$3,642.16	\$3,642.16
15908	41	678-686-41-00	\$3,642.16	\$3,642.16
15908	42	678-686-42-00	\$3,642.16	\$3,642.16
15908	43	678-686-43-00	\$3,977.08	\$3,977.08
15908	44	678-686-44-00	\$3,642.16	\$3,642.16
15908	45	678-686-45-00	\$3,977.08	\$3,977.08
15908	46	678-686-46-00	\$3,642.16	\$3,642.16
15908	50	678-686-47-00	\$3,642.16	\$3,642.16
15908	51	678-686-48-00	\$3,642.16	\$3,642.16
15908	52	678-686-49-00	\$3,977.08	\$3,977.08
15908	A	678-686-50-00	\$0.00	\$0.00
15908	B	678-686-51-00	\$0.00	\$0.00
15908	C	678-686-52-00	\$0.00	\$0.00
15908	D	678-686-53-00	\$0.00	\$0.00
15908	E	678-686-54-00	\$0.00	\$0.00
15908	F	678-686-55-00	\$0.00	\$0.00
15908	I	678-686-56-00	\$0.00	\$0.00
15908	M	678-686-57-00	\$0.00	\$0.00
15908	O	678-686-58-00	\$0.00	\$0.00
15908	P	678-686-59-00	\$0.00	\$0.00
15908	S	678-686-60-00	\$0.00	\$0.00
15908	T	678-686-61-00	\$0.00	\$0.00
15950	43	678-687-01-00	\$3,139.80	\$3,139.80
15950	44	678-687-02-00	\$2,703.22	\$2,703.22
15950	45	678-687-03-00	\$3,367.06	\$3,367.06
15950	46	678-687-04-00	\$3,139.80	\$3,139.80
15950	47	678-687-05-00	\$2,703.22	\$2,703.22
15950	48	678-687-06-00	\$3,367.06	\$3,367.06
15950	49	678-687-07-00	\$3,139.80	\$3,139.80
15950	50	678-687-08-00	\$2,703.22	\$2,703.22
15950	51	678-687-09-00	\$3,367.06	\$3,367.06
15950	52	678-687-10-00	\$3,139.80	\$3,139.80
15950	53	678-687-11-00	\$2,703.22	\$2,703.22
15950	54	678-687-12-00	\$3,367.06	\$3,367.06
15950	55	678-687-13-00	\$3,139.80	\$3,139.80
15950	56	678-687-14-00	\$2,703.22	\$2,703.22
15950	57	678-687-15-00	\$3,367.06	\$3,367.06
15950	58	678-687-16-00	\$3,139.80	\$3,139.80
15950	59	678-687-17-00	\$2,703.22	\$2,703.22
15950	60	678-687-18-00	\$3,367.06	\$3,367.06

Poway Unified School District
Community Facilities District No. 15 Improvement Area A
Fiscal Year 2025/2026 Special Tax Roll

Tract	Lot	Assessor's Parcel Number	Maximum Special Tax	Assigned Special Tax
15950	61	678-687-19-00	\$3,367.06	\$3,367.06
15950	62	678-687-20-00	\$2,703.22	\$2,703.22
15950	63	678-687-21-00	\$3,367.06	\$3,367.06
15950	C	678-687-22-00	\$0.00	\$0.00

Total Parcels	256
Total Taxable Parcels	209
Total Assigned Special Tax	\$683,524.74