



Improvement Area C of Community Facilities District No. 10

Annual Special Tax Report

Fiscal Year Ending June 30, 2025

Poway Unified School District

2025 / 2026



A division of California Financial Services

School District

Poway Unified School District
15250 Avenue of Science
San Diego, CA 92128
T. (858) 521-2800

Fiscal Agent

Zion Bancorporation, National Association
707 Wilshire Boulevard, Suite 5000
Los Angeles, CA 90017
T. (213) 593-3152

Special Tax Administrator

KeyAnalytics
27201 Puerta Real, Suite 260
Mission Viejo, CA 92691
T. (949) 282-1077

Special Assessment Questions
T. (877) 575-0265
taxinfo@calschools.com

Bond Counsel

Chapman & Cutler, LLP
595 Market Street
San Francisco, CA 94105

Table of Contents

Introduction	1
I. CFD Background	3
A. Location	3
B. Formation	3
C. Bonds	4
II. Fiscal Year 2024/2025 Special Tax Levy	6
A. Special Tax Levy	6
B. Special Tax Collections and Delinquencies	7
III. Fund and Account Activity and Balances	8
A. Fiscal Agent Accounts	8
B. Sources and Uses of Funds	9
IV. Senate Bill 165	10
A. Authorized Facilities	10
B. 2003 Special Tax Bonds	14
C. Special Tax Refunding Bonds, Series 2013	15
D. Special Tax Refunding Bonds, Series 2022	16
E. Special Taxes	17
F. Pooled Special Tax Accounts	18
V. Minimum Annual Special Tax Requirement	20
A. Minimum Annual Special Tax Requirement	20
B. Administrative Expense Budget	21
VI. Special Tax Classification	22
A. Developed Property	22
VII. Fiscal Year 2025/2026 Special Tax Levy	23

Exhibit A – First Amended Rate and Method of Apportionment

Exhibit B – CFD Boundary Map

Exhibit C – Assessor’s Parcel Maps

Exhibit D – Special Tax Refunding Bonds, Series 2022 Debt Service Schedule

Exhibit E – Delinquent Annual Special Tax Report

Exhibit F – Summary of Transactions for Fiscal Agent Accounts

Exhibit G – Annual Special Tax Roll for Fiscal Year 2025/2026

Introduction

Improvement Area (“IA”) C of Community Facilities District (“CFD”) No. 10 of the Poway Unified School District (the “School District”) was formed pursuant to the terms and provisions of the “Mello-Roos Community Facilities Act of 1982”, as amended (the “Act”), being Chapter 2.5, Part 1, Division 2, Title 5 of the Government Code of the State of California. IA C of CFD No. 10 is authorized under the Act to finance certain facilities (the “Authorized Facilities”) as established at the time of formation.

This Annual Special Tax Report (the “Report”) summarizes certain general and administrative information and analyzes the financial obligations of IA C of CFD No. 10 for the purpose of establishing the Annual Special Tax Levy for Fiscal Year 2025/2026. The Annual Special Tax Levy is calculated pursuant to the First Amended Rate and Method of Apportionment (the “RMA”) which is attached to this Report as Exhibit A.

All capitalized terms not defined herein are used as defined in the RMA and/or Bond Indenture, dated March 1, 2022, between the School District and Zion Bancorporation, National Association acting as Fiscal Agent (the “Fiscal Agent”).

This Report is organized into the following Sections:

Section I – CFD Background

Section I provides background information relating to the formation of IA C of CFD No. 10 and the long-term obligations issued to finance the Authorized Facilities.

Section II – Fiscal Year 2024/2025 Special Tax Levy

Section II provides information regarding the levy and collection of Special Taxes for Fiscal Year 2024/2025 and an accounting of the remaining collections.

Section III – Fund and Account Balances

Section III examines the financial activity within the funds and accounts associated with IA C of CFD No. 10.

Section IV – Senate Bill 165

Section IV provides information required under Senate Bill 165 regarding the initial allocation of bond proceeds and the expenditure of the Annual Special Taxes and bond proceeds utilized to fund the Authorized Facilities of IA C of CFD No. 10 for Fiscal Year 2024/2025.

Section V – Minimum Annual Special Tax Requirement

Section V calculates the Minimum Annual Special Tax Requirement based on the obligations of IA C of CFD No. 10 for Fiscal Year 2025/2026.

Section VI – Special Tax Classification

Section VI provides updated information regarding the Special Tax classification of parcels within IA C of CFD No. 10.

Section VII – Fiscal Year 2025/2026 Special Tax Levy

Section VII provides the Fiscal Year 2025/2026 Special Tax levy based on updated Special Tax classifications and the Minimum Annual Special Tax Requirement.

I. CFD Background

This Section provides background information regarding the formation of IA C of CFD No. 10 and the bonds issued to fund the Authorized Facilities.

A. Location

CFD No. 10 is located in several non-contiguous areas of land located in a portion of the School District which is within the City of San Diego (“City”). It straddles State Route 56 to the north and south and includes parcels on both the east and west side of Camino del Sur adjacent to Westview High School. IA C of CFD No. 10 is divided into two communities by State Route 56. The top portion is located southeast of the intersection of Torrey Meadows Drive and Via Sabbia with State Route 56 on the southerly border. The bottom portion is located northeast of the intersection of Torrey Meadows Drive and Torrey Santa Fe Road with State Route 56 on the northerly border. For reference, the boundary map of IA C of CFD No. 10 is included as Exhibit B and the current Assessor’s Parcel maps are included as Exhibit C.

B. Formation

CFD No. 10 was formed and established by the School District on August 27, 2001, under the Act, following a public hearing conducted by the Board of Education of the School District (the “Board”), as legislative body of CFD No. 10, and a landowner election at which the qualified electors of CFD No. 10 authorized IA C of CFD No. 10 to incur bonded indebtedness in an amount not to exceed \$3,000,000 and approved the levy of Annual Special Taxes.

CFD No. 10 was formed pursuant to the Subarea IV – Torrey Highlands School Impact Mitigation Agreement dated July 1, 1996, with various owners to impose the levy of special taxes to finance the public school facilities and related infrastructure required by the School District and the City. Additionally, IA C of CFD No. 10 was formed pursuant to the Joint

Community Facilities Agreement by and between the School District and City dated July 9, 2001.

The table below provides information related to the formation of IA C of CFD No. 10.

**Board Actions Related to
Formation of IA C of CFD No. 10**

Resolution	Board Meeting Date	Resolution No.
Resolution of Intention	April 16, 2001	42-2001
Resolution to Incur Bonded Indebtedness	April 16, 2001	43-2001
Resolution of Formation	August 27, 2001	08-2002
Ordinance Levying Special Taxes	August 27, 2001	2002-01
Resolution of Intention to Amend RMA	April 21, 2003	72-2003
Resolution Approving First Amended RMA	June 3, 2003	89-2003
Ordinance Amending Levy of Special Taxes	May 16, 2003	2003-02

A Notice of Special Tax Lien was recorded in the real property records of the County on September 21, 2001, on all property within IA C of CFD No. 10 as Document No. 2001-0681528. An Amendment to Notice of Special Tax Lien was recorded in the real property records of the County on September 4, 2003, on all property within IA C of CFD No. 10 as Document No. 2003-1081847.

C. Bonds

1. 2003 Special Tax Bonds

On October 16, 2003, the 2003 Special Tax Bonds ("2003 Bonds") of the School District were issued in the amount of \$3,000,000 for IA C of CFD No. 10. The 2003 Bonds were issued under and subject to the terms of the Bond Indenture dated September 1, 2003 ("2003 Indenture"), and the Act. The proceeds of the 2003 Bonds were used to (i) finance, either directly or indirectly, the acquisition and construction of certain school

and road improvements, (ii) fund a reserve fund for the 2003 Bonds, (iii) pay interest on the 2003 Bonds through September 1, 2004, (iv) pay certain administrative expenses of IA C of CFD No. 10, and (v) pay the costs of issuing the 2003 Bonds.

2. Special Tax Refunding Bonds, Series 2013

On February 14, 2013, the Special Tax Refunding Bonds, Series 2013 (“2013 Bonds”) of the School District were issued in the amount of \$2,625,000. The 2013 Bonds were issued under and subject to the terms of the Bond Indenture dated January 1, 2013 (“2013 Indenture”), and the Act. The 2013 Bonds were used to defease and refund the 2003 Bonds. The 2013 Bonds are Local Obligation Bonds of the Poway Unified School District Public Financing Authority (“Authority”) and are utilized, along with the debt service payments from IA No. 1 of CFD No. 2, IA D of CFD No. 10, IA E of CFD No. 10, IA A of CFD No. 11, Zone 1 of CFD No. 11, Zone 2 of CFD No. 11, and Zone 3 of CFD No. 11, to pay the debt service of the 2013 Special Tax Revenue Bonds of the Authority.

2. Special Tax Refunding Bonds, Series 2022

On March 25, 2022, the Special Tax Refunding Bonds, Series 2022 (“2022 Bonds”, collectively with the 2003 Bonds and 2013 Bonds, “Bonds”), of the School District were issued in the amount of \$1,985,000. The 2022 Bonds were issued under and subject to the terms of the Bond Indenture dated March 1, 2022 (“2022 Indenture”), and the Act. The purpose of the 2022 Bonds is to defease and refund a portion of the 2013 Special Tax Revenue Bonds of the Authority, thereby causing the discharge of the 2013 Bonds. The 2022 Bonds are Local Obligations Bonds of the Authority and are utilized, along with the debt service payments from IA No. 1 of CFD No. 2, IA D of CFD No. 10, IA E of CFD No. 10, IA A of CFD No. 11, Zone 1 of CFD No. 11, Zone 2 of CFD No. 11, and Zone 3 of CFD No. 11 to pay debt service of the Special Tax Revenue Refunding Bonds, Series 2013 of the Authority. For more information regarding the use of the 2022 Bonds proceeds, please refer to Section IV of this Report.

A copy of the debt service schedule of the 2022 Bonds is included as Exhibit D.

II. Fiscal Year 2024/2025 Special Tax Levy

Each Fiscal Year, IA C of CFD No. 10 levies and collects Special Taxes pursuant to the RMA in order to meet the obligation for that Fiscal Year. This Section provides a summary of the levy and collection of Special Taxes in Fiscal Year 2024/2025.

A. Special Tax Levy

The Special Tax levy for Fiscal Year 2024/2025 is summarized by Special Tax classification in the table below.

**Fiscal Year 2024/2025
Annual Special Tax Levy**

Tax Class/ Land Use	Unit Type	Number of Units/Acres	Assigned Special Tax Rate	Total Special Taxes
Zone 1				
1	≤ 1,150 Sq. Ft.	25 Units	\$1,896.58 per Unit	\$47,414.50
2	1,151 - 1,400 Sq. Ft.	28 Units	\$2,151.58 per Unit	60,244.24
3	> 1,400 Sq. Ft.	28 Units	\$2,333.72 per Unit	65,344.16
Developed Property		81 Units	N/A	\$173,002.90
Undeveloped Property		0.00 Acres	\$0.00 per Acre	\$0.00
Zone 2				
4	≤ 1,850 Sq. Ft.	26 Units	\$1,510.86 per Unit	\$39,282.36
5	1,851 - 2,000 Sq. Ft.	24 Units	\$1,693.00 per Unit	40,632.00
6	2,001 - 2,250 Sq. Ft.	27 Units	\$1,875.14 per Unit	50,628.78
7	> 2,250 Sq. Ft.	29 Units	\$1,996.58 per Unit	57,900.82
Developed Property		106 Units	N/A	\$188,443.96
Undeveloped Property		0.00 Acres	\$0.00 per Acre	\$0.00
Total		187 Units		\$361,446.86

B. Special Tax Collections and Delinquencies

Delinquent Annual Special Taxes for IA C of CFD No. 10, as of June 30, 2025, for Fiscal Year 2024/2025 is summarized in the table below. Based on the Foreclosure Covenant outlined in the 2022 Indenture and the current delinquency rates, no parcel exceeds the foreclosure threshold. A detailed listing of the Fiscal Year 2024/2025 Delinquent Annual Special Taxes, based on the year end collections and information regarding the Foreclosure Covenant is provided as Exhibit E.

IA C of CFD No. 10 Special Tax Collections and Delinquencies

Fiscal Year	Subject Fiscal Year					June 30, 2025	
	Aggregate Special Tax	Parcels Delinquent ^[1]	Amount Collected	Amount Delinquent	Delinquency Rate	Remaining Amount Delinquent	Remaining Delinquency Rate
2020/2021	\$340,740.00	N/A	\$338,988.00	\$1,752.00	0.51%	\$0.00	0.00%
2021/2022	345,766.00	N/A	341,800.00	3,966.00	1.15%	0.00	0.00%
2022/2023	352,680.42	1	351,866.79	813.63	0.23%	0.00	0.00%
2023/2024	359,739.64	0	359,739.64	0.00	0.00%	0.00	0.00%
2024/2025	361,446.86	1	360,371.07	1,075.79	0.30%	1,075.79	0.30%

[1] Information not provided by previous administrator for Fiscal Years 2020/2021 through 2021/2022.

III. Fund and Account Activity and Balances

Special Taxes are collected by the County Tax Collector as part of the regular property tax bills. Once received by the County Tax Collector the Special Taxes are transferred to the School District where they are then deposited into the Special Tax Fund held with the Fiscal Agent. Special Taxes are periodically transferred to make debt service payments on the 2022 Bonds and pay other authorized costs. This Section summarizes the account activity and balances of the funds and accounts associated with IA C of CFD No. 10.

A. Fiscal Agent Accounts

Funds and accounts associated with the Bonds are currently being held by the Fiscal Agent. These funds and accounts were established pursuant to the 2022 Indenture.

The balances, as of June 30, 2025, of the funds, accounts and subaccounts by the Fiscal Agent are listed in the table below. Exhibit F contains a detailed listing of the transactions within these funds for Fiscal Year 2024/2025.

**Fund and Account Balances
as of June 30, 2025**

Account Name	Account Number	Balance
Special Tax Fund	7150944A	\$313,458.25
Interest Account	7150944B	0.10
Principal Account	7150944C	0.00
Administrative Expense Fund	7150944I	40,777.62
Purchase Transfer Account	7150944P	0.00
Redemption Fund	7150944R	3,015.56
Total		\$357,251.53

B. Sources and Uses of Funds

The sources and uses of funds collected and expended by IA C of CFD No. 10 are limited based on the restrictions as described within the 2022 Indenture. The table below presents the sources and uses of all funds and accounts for IA C of CFD No. 10 from July 1, 2024, through June 30, 2025. For a more detailed description of the sources and uses of funds please refer to Section III of the 2022 Indenture.

Fiscal Year 2024/2025 Sources and Uses of Funds

Sources	
Bond Proceeds	\$0.00
Annual Special Tax Receipts	359,418.66
Investment Earnings	10,190.69
Total	\$369,609.35
Uses	
Interest Payments	(\$56,100.00)
Principal Payments	(150,000.00)
Authorized Facilities	0.00
Administrative Expenses	(36,097.00)
Transfer to the 2022B Rental Payment Surplus Account	(166,117.50)
Total	(\$408,314.50)

IV. Senate Bill 165

Senate Bill 165, or the Local Agency Special Tax and Bond Accountability Act (“SB 165”), requires any local special tax/local bond measure subject to voter approval contain a statement indicating the specific purposes of the Special Tax, require that the proceeds of the Special Tax be applied to those purposes, require the creation of an account into which the proceeds shall be deposited, and require an annual report containing specified information concerning the use of the proceeds. SB 165 only applies to CFDs authorized on or after January 1, 2001, in accordance with Sections 50075.1 and 53410 of the California Government Code.

A. Authorized Facilities

Pursuant to the Mello-Roos Community Facilities Act of 1982, as Amended (“Act”), CFD No. 10 can only be used to fund the “Authorized Facilities” as outlined at the time of formation. The following is an excerpt which describes the Authorized Facilities of CFD No. 10:

School Facilities - School Facilities shall include the acquisition, acquisition, planning, construction and/or financing of those school facilities, including classrooms, multi-purpose, administration and auxiliary space at each school, central support and administrative facilities, interim housing, transportation and special education facilities, together with furniture, equipment and technology, needed by the School District in order to serve directly or indirectly the student population to be generated as a result of the development of the property within CFD No. 10, together with all land or interests in land required for the construction of such facilities and all land or interests in land required to be provided by the School District as mitigation of environmental impacts associated with the development of such school facilities as well as all that portion of the related incidental expenses and the costs to the School District related to the negotiation, execution and implementation of the Subarea IV – Torrey Highlands School Impact Mitigation Agreement dated as of July 1, 1996 between the District and each “Owner” named therein allocable to the properties

within CFD No. 10. “School Facilities” shall also mean the acquisition, planning, construction, and/or financing of other additional school facilities, including classrooms, multi-purpose, administration and auxiliary space at each school, central support and administrative facilities, interim housing, transportation and special education facilities, together with furniture, equipment and technology, needed by the School District to serve the student population of the School District and which are financed in whole or in part from the revenues of special taxes levied in any fiscal year on Developed Property within any Improvement Area or Improvement Areas in excess of that required to satisfy the Minimum Annual Special Tax Requirements for such Improvement Area or Improvement Areas for such fiscal year.

The School facilities shall also include the attributable costs of engineering, design, planning, materials testing, coordination, construction staking and construction, together with the expenses related to the issuance and sale of any debt as defined in Section 53317(d) of the Act, including but not limited to, underwriters’ discount, appraisals, market studies, reserve fund, capitalized interest, bond counsel, special tax consultant, bond and official statement printing, administrative expenses of the School District, CFD No. 10 and bond trustee or fiscal agent related to the CFD No. 10 and any such debt and all the other incidental expenses..

The School Facilities shall be constructed, whether or not acquired in their completed states, pursuant to plans and specifications approved by the School District.

The School Facilities listed are representative of the types of improvements authorized to be financed by CFD No. 10. Detailed scope and limits of specific projects will be determined as appropriate, consistent with the standards of the School District. Addition, deletion, or modification of descriptions of School Facilities may be made

consistent with the requirements of the Board of Education of the School District, the CFD, and the Act.

City Improvements - City Improvements means the acquisition, planning, construction and/or financing of those improvements to be owned by the City of San Diego, including (a) Camino Ruiz Northerly (grading 4 lanes, construction 2 lanes) from “A” Street to Carmel Valley Road, (b) Camino Ruiz Northerly (completion of full length, 4 lane improvements, (c) “B” Street from “A” Street to Camino Ruiz, (d) “A” Street and (e) Camino Ruiz/SR 56 Phase I interchange improvements

The City Improvements shall also include the attributable costs of right of way acquisition, grading and site preparation, slope and erosion control, sanitary sewers, storm drainage, water distribution facilities traffic signals, street lightning, street paving, curb, gutter, sidewalk, median, landscaping, dry utilities, engineering, design, planning, materials testing, coordination, construction staking and construction, construction management and supervision together with the expenses related to the issuance and sale of any “debt” as defined in Section 53317(d) of the Act, including but not limited to, underwriters’ discount, appraisals, market studies, reserve fund, capitalized interest, bond counsel, special tax consultant, bond and official statement printing, administrative expenses of the District, CFD No. 10 and bond trustee or fiscal agent related to any Improvement Area in CFD No. 10 and any such debt and all other incidental expenses.

The City Improvements shall be constructed, whether or not acquired in their completed states, pursuant to plans and specification approved by the City of San Diego.

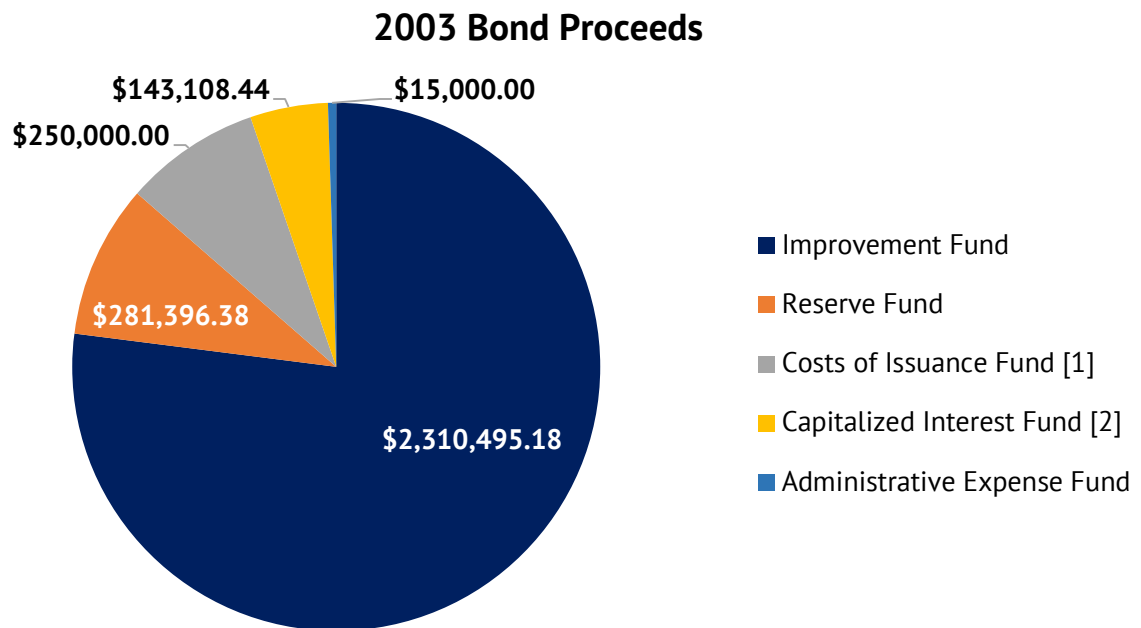
The City Improvements listed are representative of the types of improvement that are to be owned, operated, and maintained by the City and to be financed by CFD No. 10 Detailed scope and limits of specific projects will be determined as appropriate, consistent with the

standards of the City. Addition, deletion, or modification of descriptions of City Improvements may be made consistent with the requirements of the City subject to the approval by the Board of Education of the School District, CFD No. 10, and the Act.

B. 2003 Special Tax Bonds

1. Bond Proceeds

In accordance with the 2003 Bond Indenture by and between IA C of CFD No. 10 and the Fiscal Agent, the proceeds of the 2003 Bonds were deposited in the amount \$3,000,000 into the funds and accounts shown in the graph below.



[1] Costs of Issuance includes Underwriter's Discount, Bond Counsel fees, Disclosure Counsel fees, Special Tax Consultant fees, Municipal Advisor fees, Trustee fees, Printing Costs, and other issuance costs. The actual amount deposited into the Costs of Issuance Fund was \$160,000.00.

[2] Capitalized Interest through September 1, 2004.

2. Construction Funds and Accounts

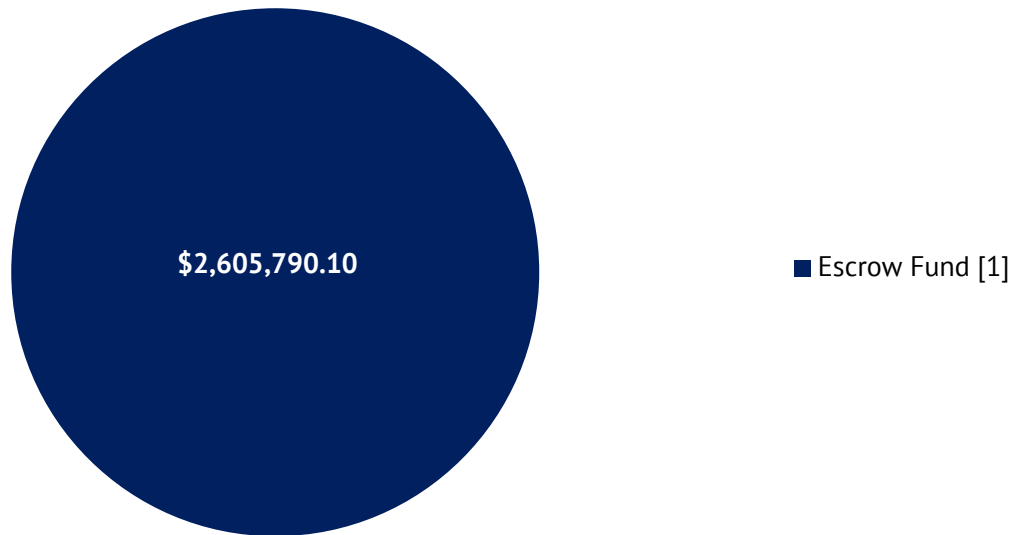
All construction funds generated from the issuance of the 2003 Bonds for School Facilities have been expended on the Authorized School Facilities of IA C of CFD No. 10 and all construction accounts have been closed. For information for previously accrued and expended funds, please refer to previous Reports.

C. Special Tax Refunding Bonds, Series 2013

1. Bond Proceeds

In accordance with the 2013 Indenture by and between IA C of CFD No. 10 and the Fiscal Agent, the proceeds of the 2013 Bonds were deposited in the amount \$2,625,000, less the Authority Discount of \$19,209.90, into the funds and accounts shown in the graph below.

2013 Bond Proceeds



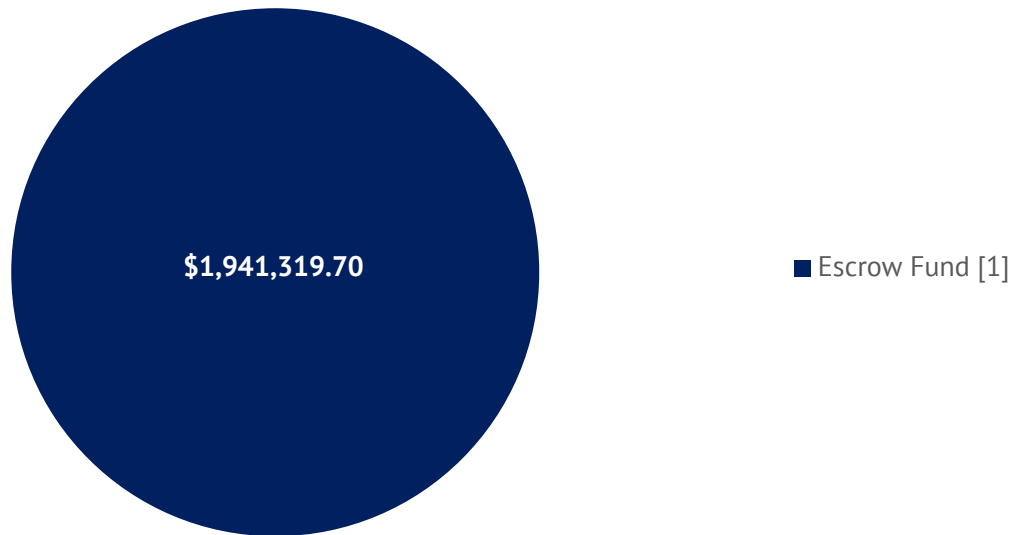
[1] Funds used to redeem in full the 2004 Bonds on March 1, 2013.

D. Special Tax Refunding Bonds, Series 2022

1. Bond Proceeds

In accordance with the 2022 Indenture by and between IA C of CFD No. 10 and the Fiscal Agent, the proceeds of the 2022 Bonds were deposited in the amount \$1,985,000, less the Authority Discount of \$43,680.30, into the funds and accounts shown in the graph below.

2022 Bond Proceeds



[1] Funds used to redeem in full the 2013 Bonds on March 15, 2023.

E. Special Taxes

IA C of CFD No. 10 has covenanted to levy the Special Taxes in accordance with the RMA. The Special Taxes collected can only be used for the purposes as outlined in the 2022 Indenture. The table below presents a detailed accounting of the Special Taxes collected and expended by IA C of CFD No. 10 within the 2022 Special Tax Fund created under the 2022 Indenture.

2022 Special Tax Fund

Balance as of July 1, 2024		\$316,293.49
Accruals		\$367,088.15
Special Tax Deposits	\$359,418.66	
Investment Earnings	7,669.49	
Expenditures		(\$369,923.39)
Transfer to the Administrative Expense Fund	(\$22,735.00)	
Transfer to the Interest Account	(56,070.89)	
Transfer to the Principal Account	(125,000.00)	
Transfer to the 2022B PFA Rental Payment Surplus Account	(166,117.50)	
Balance as of June 30, 2025		\$313,458.25

The table below presents a detailed listing of the Annual Special Taxes collected and expended within the Custodial Account of IA C of CFD No. 10.

IA C of CFD No. 10 Custodial Account

Balance as of July 1, 2024		\$74.27
Accruals		\$3.33
Investment Earnings	\$3.33	
Expenditures		\$0.00
Balance as of June 30, 2025		\$77.60

F. Pooled Special Tax Accounts

Pursuant to 2022 Indenture, after all expenses have been paid, all Surplus Special Taxes are to be transferred to the Rental Payment Surplus Fund of the 2022B Public Financing Authority. The table below presents a detailed listing of the Annual Special Taxes collected and expended by the Rental Payment Surplus Fund of the Public Financing Authority from July 1, 2024, through June 30, 2025.

2022B PFA Rental Payment Surplus Fund

Balance as of July 1, 2024		\$14,679.52
Accruals		\$1,133,154.91
Investment Earnings	\$12,488.66	
Transfer from IA C of CFD No. 10 Special Tax Fund	166,117.50	
Transfer from IA D of CFD No. 10 Special Tax Fund	142,737.85	
Transfer from IA E of CFD No. 10 Special Tax Fund	214,023.87	
Transfer from IA A of CFD No. 11 Special Tax Fund	300,047.63	
Transfer from 2022B Authority Surplus Fund	297,739.40	
Expenditures		(\$840,761.12)
Transfer to 2012 Certificates Payment Account	(\$840,761.12)	
Balance as of June 30, 2025		\$307,073.31

On August 9, 2007, the School District issued the Lease Revenue Bonds, Series 2007 ("2007 LRBs") in the amount of \$34,783,991. The construction proceeds of the 2007 LRBs were used to (i) complete the expansion projects at several existing school sites, (ii) acquire, construct, and install central administrative and support facilities, and (iii) repay an advance of funds for the construction of improvements at Rancho Bernardo High School. On September 4, 2012, the 2007 LRBs were refinanced by the School District with the issuance of the 2012 School Facilities Restructuring Program Certificates of Participation ("2012 Certificates"). Special Taxes remaining after all obligations are paid are being used to pay Lease Payments on the 2012 Certificates. The table on the following page presents a detailed listing of the sources and uses of CFD Special Taxes associated with the 2012 Certificates through June 30, 2025.

2012 Certificates Payment Account (2007 Custodial Account)

Balance as of July 1, 2024		\$11,547,494.45
Accruals		\$5,445,276.59
Investment Earnings	\$549,767.78	
Transfer from IA A of CFD No. 6 Special Tax Fund	621,360.36	
Transfer from IA B of CFD No. 6 Special Tax Fund	1,363,708.12	
Transfer from IA C of CFD No. 6 Special Tax Fund	180,956.94	
Transfer from IA A of CFD No. 10 Special Tax Fund	463,800.98	
Transfer from IA B of CFD No. 10 Special Tax Fund	232,082.75	
Transfer from IA F of CFD No. 10 Special Tax Fund	44,278.39	
Transfer from IA A of CFD No. 14 Special Tax Fund	1,148,560.15	
Transfer from 2022B PFA Rental Payment Surplus Account	840,761.12	
Expenditures		(\$2,171,578.00)
Lease Payments	(\$2,166,878.00)	
Administrative Expenses	(4,700.00)	
Balance as of June 30, 2025		\$14,821,193.04

A portion of the remaining Special Taxes were deposited into a pooled Improvement Area Surplus Custodial Account. The balance of the Improvement Area Surplus Custodial account will be used to fund projects within the authorized facilities of each participating CFD. The table below shows the accounts and expenditures in the Improvement Area Surplus Custodial Account through June 30, 2025.

Improvement Area Surplus Custodial Account

Balance as of July 1, 2024		\$673,500.40
Accruals		\$28,598.39
Investment Earnings	\$28,598.39	
Expenditures		(\$68,061.17)
Capital Facilities Planning Expenses	(\$23,324.00)	
Authorized Facilities	(23,744.00)	
Administrative Expenses	(20,993.17)	
Balance as of June 30, 2025		\$634,037.62

V. Minimum Annual Special Tax Requirement

This Section outlines the calculation of the Minimum Annual Special Tax Requirement of IA C of CFD No. 10 based on the financial obligations for Fiscal Year 2025/2026.

A. Minimum Annual Special Tax Requirement

The Annual Special Taxes of IA C of CFD No. 10 are calculated in accordance and pursuant to the RMA. Pursuant to the 2022 Indenture, any amounts not required to pay Administrative Expenses and Debt Service on the Bonds shall be transferred to the Authority Rental Payment Surplus Account. The table below shows the calculation of the Minimum Annual Special Tax Requirement for Fiscal Year 2025/2026.

Minimum Annual Special Tax Requirement for IA C of CFD No. 10	
Fiscal Year 2024/2025 Remaining Sources	\$314,564.50
Balance of Special Tax Fund	\$313,458.25
Balance of Interest Fund	0.10
Balance of Principal Fund	0.00
Anticipated Special Taxes	1,106.15
Fiscal Year 2024/2025 Remaining Obligations	(\$314,564.50)
September 1, 2025 Interest Payment	(\$26,812.50)
September 1, 2025 Principal Payment	(145,000.00)
Transfer to the Rental Payment Surplus Account	(142,752.00)
Fiscal Year 2024/2025 Surplus (Reserve Fund Draw)	\$0.00
Fiscal Year 2025/2026 Obligations	(\$368,675.50)
Administrative Expense Budget	(\$23,189.70)
Anticipated Special Tax Delinquencies ^[1]	(1,097.30)
March 1, 2026 Interest Payment	(24,420.00)
September 1, 2026 Interest Payment	(24,420.00)
September 1, 2026 Principal Payment	(155,000.00)
Transfer to the Rental Payment Surplus Account	(140,548.50)
Fiscal Year 2025/2026 Minimum Annual Special Tax Requirement	\$368,675.50

[1] Assumes the Fiscal Year 2024/2025 Year End delinquency rate of 0.30%.

B. Administrative Expense Budget

Each year a portion of the Annual Special Tax levy is used to pay for the administrative expenses incurred by the School District to levy the Annual Special Tax and administer the debt issued to finance Authorized Facilities. The estimated Fiscal Year 2025/2026 Administrative Expenses are shown in the table below.

Fiscal Year 2025/2026 Budgeted Administrative Expenses

Administrative Expense	Budget
District Staff and Expenses	\$11,171.00
Consultant/Trustee Expenses	7,000.00
County Tax Collection Fees	18.70
Contingency for Legal	5,000.00
Total Expenses	\$23,189.70

VI. Special Tax Classification

Each Fiscal Year, parcels within IA C of CFD No. 10 are assigned a Special Tax classification based on the parameters outlined in the RMA. This Section outlines how parcels are classified and the amount of Taxable Property within IA C of CFD No. 10.

A. Developed Property

Pursuant to the RMA, a parcel is considered to be classified as Developed Property once a Building Permit is issued on or prior to May 1st of the prior Fiscal Year. Building Permits have been issued for 191 Units by the City within IA C of CFD No. 10. According to the County Assessor, all property zoned for residential development within IA C of CFD No. 10 has been built and completed. As of the date of this Report, four (4) Units have prepaid their Special Tax obligation and is no longer considered taxable property and is no longer subject to the Special Tax. The table below summarizes the Special Tax classification for the Units within IA C of CFD No. 10.

**Fiscal Year 2025/2026
Special Tax Classification**

Initial Tax Year	Land Use	Number of Units
2003/2004	Developed Property	147
2004/2005	Developed Property	40
Total		187

VII. Fiscal Year 2025/2026 Special Tax Levy

Each Fiscal Year, the Special Tax is levied up to the Maximum Special Tax rate, as determined by the provisions of the RMA, in the amount needed to satisfy the Minimum Annual Special Tax Requirement.

Based on the Minimum Annual Special Tax Requirement listed in Section V, IA C of CFD No. 10 will levy at the applied Special Tax rate allowable for each parcel classified as Developed Property. The special tax roll, containing a listing of each parcel's applied Special Tax and Maximum Special Tax, calculated pursuant to the RMA, can be found attached as Exhibit G.

A summary of the Special Tax levy for Fiscal Year 2025/2026 by Special Tax classification as determined by the RMA for IA C of CFD No. 10 can be found in the table below.

Fiscal Year 2025/2026 Annual Special Tax Levy

Tax Class/ Land Use	Unit Type	Number of Units/Acres	Assigned Special Tax Rate	Total Special Taxes
Zone 1				
1	≤ 1,150 Sq. Ft.	25 Units	\$1,934.52 per Unit	\$48,363.00
2	1,151 - 1,400 Sq. Ft.	28 Units	\$2,194.60 per Unit	61,448.80
3	> 1,400 Sq. Ft.	28 Units	\$2,380.40 per Unit	66,651.20
Developed Property		81 Units	N/A	\$176,463.00
Undeveloped Property		0.00 Acres	\$0.00 per Acre	\$0.00
Zone 2				
4	≤ 1,850 Sq. Ft.	26 Units	\$1,541.08 per Unit	\$40,068.08
5	1,851 - 2,000 Sq. Ft.	24 Units	\$1,726.86 per Unit	41,444.64
6	2,001 - 2,250 Sq. Ft.	27 Units	\$1,912.64 per Unit	51,641.28
7	> 2,250 Sq. Ft.	29 Units	\$2,036.50 per Unit	59,058.50
Developed Property		106 Units	N/A	\$192,212.50
Undeveloped Property		0.00 Acres	\$0.00 per Acre	\$0.00
Total		187 Units		\$368,675.50

https://calschools.sharepoint.com/cfs/unregulated/poway unified/developer revenue/cfd admin/cfd no. 10 ia c/fy 2025-26/poway usd_cfd 10 ia c_fy2025-26_specialtaxreport_d1.docx

Exhibit A

First Amended Rate and Method of Apportionment

**FIRST AMENDED
RATE AND METHOD OF APPORTIONMENT FOR
COMMUNITY FACILITIES DISTRICT NO. 10
OF THE POWAY UNIFIED SCHOOL DISTRICT
(IMPROVEMENT AREA C)**

An Annual Special Tax shall be levied on and collected in Improvement Area C ("IA C") of Community Facilities District No. 10 ("CFD No. 10") of the Poway Unified School District ("School District") in each Fiscal Year, in an amount determined through the application of the rate and method of apportionment described below. All of the real property in IA C of CFD No. 10, unless exempted by law or by the provisions hereof, shall be taxed for the purposes, to the extent, and in the manner herein provided.

**SECTION A
DEFINITIONS**

The terms hereinafter set forth have the following meanings:

"Acre" or "Acreage" means the land area of an Assessor's Parcel as shown on an Assessor's Parcel Map, or if the land area is not shown on an Assessor's Parcel Map, the land area shown on the applicable final map, parcel map, condominium plan, or other recorded County parcel map.

"Act" means the Mello-Roos Community Facilities Act of 1982 as amended, being Chapter 2.5, Division 2 of Title 5 of the Government Code of the State of California.

"Administrative Expenses" means any ordinary and necessary expenses of the School District to carry out its duties as the legislative body of IA C of CFD No. 10.

"Affordable Unit" means any Unit subject to deed restrictions, resale restrictions, and/or regulatory agreements recorded in favor of the City or County providing for affordable housing.

"Annual Special Tax" means the Special Tax levied in each Fiscal Year on an Assessor's Parcel as set forth in Section F. In each Fiscal Year Annual Special Tax revenues shall be used in the following order of priority: (i) to satisfy the Minimum Annual Special Tax Requirement and (ii) to pay for the acquisition, construction, rehabilitation, and improvement of School Facilities.

"Assessor's Parcel" means a lot or parcel of land in IA C of CFD No. 10 which is designated on an Assessor's Parcel Map with an assigned Assessor's Parcel Number.

"Assessor's Parcel Map" means an official map of the Assessor of the County designating parcels by Assessor's Parcel Number.

"Assessor's Parcel Number" means that number assigned to an Assessor's Parcel by the County Assessor for purposes of identification.

"Assigned Annual Special Tax" means the Special Tax of that name as set forth in Section D.

"Associate Superintendent" means the Associate Superintendent of Business Support Services of the School District or his/her designee.

"Attached Unit" means a Unit that (i) consists or shall consist of a building or buildings in which each of the individual Units has at least one common wall with another Unit and (ii) is not an Affordable Unit or a Senior Citizen Unit.

"Backup Annual Special Tax" means the Special Tax of that name described in Section E below.

"Board" means the Board of Education of the School District or its designee.

"Bonds" means any obligation to repay a sum of money, including obligations in the form of bonds, notes, certificates of participation, long-term leases, loans from government agencies, or loans from banks, other financial institutions, private businesses, or individuals, or long-term contracts, or any refunding thereof, to the repayment of which Special Taxes of IA C of CFD No. 10 are pledged.

"Building Permit" means a permit for the construction of one or more Units issued by the City, or another public agency in the event the City no longer issues said permits for the construction of Units within IA C of CFD No. 10. For purposes of this definition, "Building Permit" shall not include permits for construction or installation on commercial/industrial structures, parking structures, retaining walls, utility improvements, or other such improvements not intended for human habitation.

"Building Square Footage" or "BSF" means the square footage of internal living space of a Unit, exclusive of garages or other structures not used as living space, as determined by reference to the building permit application for such Unit or other applicable records of the City.

"Calendar Year" means any period beginning January 1 and ending December 31.

"City" means the City of San Diego.

"County" means the County of San Diego.

"Detached Unit" means a Unit which is not an Attached Unit, an Affordable Unit, or a Senior Citizen Unit.

"Developed Property" means all Assessor's Parcels for which Building Permits for the construction of Units were issued on or before May 1 of the prior Fiscal Year, provided that such Assessor's Parcels were created on or before January 1 of the prior Fiscal Year and that each such Assessor's Parcel is associated with a Lot, as determined reasonably by the Associate Superintendent.

"Exempt Property" means the property designated as Exempt Property in Section J.

"Final Subdivision Map" means a final tract map, parcel map, lot line adjustment, or functionally equivalent map or instrument that creates building sites, recorded in the County Office of the Recorder.

"Fiscal Year" means the period commencing on July 1 of any year and ending the following June 30.

"Gross Floor Area" or "GFA" means the covered and enclosed space within the perimeters of a commercial or industrial structure, not including any storage area incidental to the principal use of the development, garage, parking structure, unenclosed walkway, or utility or disposable area, as

used in Section 65995 of the Government Code.

"Gross Prepayment Amount" means any amount determined by reference to Table 3 and adjusted as set forth in Section G.

"Lot" means an individual legal lot created by a Final Subdivision Map for which a building permit for a Unit has been or could be issued, provided that land for which one or more building permits have been or could be issued for the construction of one or more model Units shall not be construed as a Lot until such land has been subdivided by a Final Subdivision Map.

"Maximum Special Tax" means, the Maximum Special Tax determined in accordance with Section C that can be levied by IAC of CFD No. 10 in any Fiscal Year on any Assessor's Parcel.

"Minimum Annual Special Tax Requirement" means the amount required in any Fiscal Year to pay: (i) the debt service on the Bonds or other indebtedness or other periodic costs on the Bonds, (ii) the Administrative Expenses of IA C of CFD No. 10, (iii) any costs associated with the release of funds from an escrow account, (iv) any amount required to establish or replenish any reserve funds established in association with the Bonds, less (v) any amounts on deposit in any fund or account which are available to pay for items (i) through (iv) above pursuant to any applicable fiscal agent agreement, bond indenture, or trust agreement.

"Minimum Taxable Acreage" means, for any Zone, the applicable acreage listed in Table 4 below.

"Partial Prepayment Amount" means the dollar amount required to prepay a portion of the Annual Special Tax obligation on any Assessor's Parcel, determined pursuant to Section H.

"Prepayment Amount" means the dollar amount required to prepay all of the Annual Special Tax obligation on any Assessor's Parcel, determined pursuant to Sections G.

"Proportionately" means that the ratio of the actual Annual Special Tax levy to the applicable Special Tax is equal for all applicable Assessor's Parcels.

"School Facilities" means any public facilities owned or to be owned by the School District.

"Senior Citizen Unit" means a Unit designated as senior citizen housing, part of a residential care facility for the elderly, or part of a multi-level care facility for the elderly as referred to in California Government Code Section 65995.1. For purposes hereof, it shall be sufficient to designate a Unit as a Senior Citizen Unit if Senior Citizen Restrictions have been effected with respect to such Unit.

"Senior Citizen Restriction" means (i) a restriction limiting the use of Units to senior citizen housing under a specific plan, a final map or other governmental entitlements, or a declaration of covenants, conditions and restrictions or any similar recorded instrument or (ii) licensing from appropriate agencies received for residential care facilities for the elderly or multi-level care facilities as those terms are defined in Health and Safety Code Section 1569.2 and Government Code Section 15432(d)(9), respectively.

"Special Tax" means any of the special taxes authorized to be levied in IA C of CFD No. 10 under the Act.

"Taxable Developed Property" means all Assessor's Parcels of Developed Property which are not Exempt Property.

"Taxable Property" means all Assessor's Parcels which are not Exempt Property.

"Taxable Undeveloped Property" means all Assessor's Parcels of Undeveloped Property which are not Exempt Property.

"Undeveloped Property" means all Assessor's Parcels which are not Developed Property.

"Unit" means each separate residential dwelling unit which comprises an independent facility capable of conveyance separate from adjacent residential dwelling units. Each Unit shall be classified as an Affordable Unit, an Attached Unit, a Detached Unit, or a Senior Citizen Unit.

"Zone" means any of the areas identified as a Zone in Exhibit A to this Rate and Method of Apportionment.

"Zone 1" means all property located within the area identified as Zone 1 in Exhibit A to this Rate and Method of Apportionment.

"Zone 2" means all property located within the area identified as Zone 2 in Exhibit A to this Rate and Method of Apportionment.

SECTION B ASSIGNMENT OF ASSESSOR'S PARCELS

For each Fiscal Year, beginning with Fiscal Year 2002-03, (i) each Assessor's Parcel shall be classified as Developed Property or Undeveloped Property; (ii) each Assessor's Parcel of Developed Property shall be classified as Taxable Developed Property or Exempt Property; (iii) each Assessor's Parcel of Undeveloped Property shall be classified as Taxable Undeveloped Property or Exempt Property; and (iv) each Assessor's Parcel shall be assigned to a Zone in accordance with Exhibit A.

SECTION C MAXIMUM SPECIAL TAX

1. Taxable Developed Property

The Maximum Special Tax for each Assessor's Parcel classified as Taxable Developed Property in any Fiscal Year shall be the greater of (i) the Assigned Annual Special Tax or (ii) the Backup Annual Special Tax.

2. Taxable Undeveloped Property

The Maximum Special Tax for any Assessor's Parcel classified as Taxable Undeveloped Property in any Fiscal Year shall be the Assigned Annual Special Tax.

SECTION D
ASSIGNED ANNUAL SPECIAL TAXES

1. Taxable Developed Property

The Assigned Annual Special Tax for each Assessor's Parcel of Taxable Developed Property in Fiscal Year 2002-03 shall be the amount determined by reference to Table 1 below. No Assigned Annual Special Tax shall apply to Affordable Units or Senior Citizen Units.

TABLE 1

**ASSIGNED ANNUAL SPECIAL TAX FOR
TAXABLE DEVELOPED PROPERTY FOR FISCAL YEAR 2002-03**

Zone	Building Square Feet	Assigned Annual Special Tax ¹
1	≤ 1,150	\$1,226.79 per Detached/Attached Unit
1	1,151 – 1,400	\$1,391.73 per Detached/Attached Unit
1	> 1,400	\$1,509.55 per Detached/Attached Unit
2	≤ 1,850	\$977.29 per Detached/Attached Unit
2	1,851 – 2,000	\$1,095.11 per Detached/Attached Unit
2	2,001 – 2,250	\$1,212.92 per Detached/Attached Unit
2	> 2,250	\$1,291.47 per Detached/Attached Unit
¹ No Assigned Annual Special Tax shall apply to Affordable Units or Senior Citizen Units.		

Each July 1, commencing July 1, 2003, the Assigned Annual Special Tax for each Assessor's Parcel of Taxable Developed Property shall be increased by two percent (2.00%) of the amount in effect in the prior Fiscal Year.

2. Taxable Undeveloped Property

The Assigned Annual Special Tax for an Assessor's Parcel of Taxable Undeveloped Property in Fiscal Year 2002-03 shall be the amount determined by reference to Table 2.

TABLE 2

**ASSIGNED ANNUAL SPECIAL TAX FOR
TAXABLE UNDEVELOPED PROPERTY FOR FISCAL YEAR 2002-03**

Zone	Assigned Annual Special Tax
Zone 1	\$27,919.34 per Acre
Zone 2	\$15,463.99 per Acre

On each July 1, commencing July 1, 2003, the Assigned Annual Special Tax per Acre for each Zone shall be increased by two percent (2.00%) of the amount in effect in the prior Fiscal Year.

SECTION E BACKUP ANNUAL SPECIAL TAX

Each Fiscal Year, each Assessor's Parcel of Taxable Developed Property shall be subject to a Backup Annual Special Tax. In each Fiscal Year, the Backup Annual Special Tax rate for Taxable Developed Property shall be the rate per Lot calculated according to the following formula:

$$B = (Z * A) / L$$

The terms above have the following meanings:

B	=	Backup Annual Special Tax per Lot for the applicable Fiscal Year
Z	=	Assigned Annual Special Tax per Acre of Taxable Undeveloped Property for the applicable Zone for the applicable Fiscal Year
A	=	Acreage of Taxable Developed Property expected to exist in the applicable Final Subdivision Map at buildout, as determined by the Associate Superintendent pursuant to Section J
L	=	Lots in the Final Subdivision Map

Notwithstanding the foregoing, if all or any portion of the Final Subdivision Map(s) described in the preceding paragraph is subsequently changed or modified, then the Backup Annual Special Tax for each Assessor's Parcel of Developed Property in such Final Subdivision Map area changed or modified shall be a rate per square foot of Acreage calculated as follows:

1. Determine the total Backup Annual Special Taxes anticipated to apply to the changed or modified Final Subdivision Map area prior to the change or modification.
2. The result of paragraph 1 above shall be divided by the Acreage of Taxable Property which is ultimately expected to exist in such changed or modified Final Subdivision Map area, as reasonably determined by the Board.
3. The result of paragraph 2 above shall be divided by 43,560. The result is the Backup Annual Special Tax per square foot of Acreage which shall be applicable to Assessor's Parcels of Developed Property in such changed or modified Final Subdivision Map area for all remaining Fiscal Years in which the Special Tax may be levied.

SECTION F
METHOD OF APPORTIONMENT OF THE ANNUAL SPECIAL TAX

Commencing Fiscal Year 2002-03 and for each subsequent Fiscal Year, the Board shall levy Annual Special Taxes as follows:

- Step One: The Board shall levy an Annual Special Tax on each Assessor's Parcel of Taxable Developed Property in an amount equal to the Assigned Annual Special Tax applicable to each such Assessor's Parcel.
- Step Two: If the sum of the amounts collected in step one is insufficient to satisfy the Minimum Annual Special Tax Requirement, then the Board shall additionally levy an Annual Special Tax Proportionately on each Assessor's Parcel of Undeveloped Property, up to the Assigned Annual Special Tax applicable to each such Assessor's Parcel, to satisfy the Minimum Annual Special Tax Requirement.
- Step Three: If the sum of the amounts collected in steps one and two is insufficient to satisfy the Minimum Annual Special Tax Requirement, then the Board shall additionally levy an Annual Special Tax Proportionately on each Assessor's Parcel of Developed Property, up to the Maximum Special Tax applicable to each such Assessor's Parcel, to satisfy the Minimum Annual Special Tax Requirement.

SECTION G
PREPAYMENT OF ANNUAL SPECIAL TAX

The Annual Special Tax obligation of an Assessor's Parcel of Taxable Developed Property or an Assessor's Parcel of Taxable Undeveloped Property for which a Building Permit has been issued may be prepaid in full, provided that there are no delinquent Special Taxes, penalties, or interest charges outstanding with respect to such Assessor's Parcel at the time the Annual Special Tax obligation would be prepaid. The Prepayment Amount for an Assessor's Parcel eligible for prepayment shall be determined as described below.

1. Prior to Issuance of Bonds

Prior to the issuance of Bonds, the Prepayment Amount for each Assessor's Parcel of Developed Property and each Assessor's Parcel of Undeveloped Property for which a Building Permit has been issued shall be the amount equal to the Gross Prepayment Amount. The Gross Prepayment Amount for the period May 1, 2002 to April 30, 2003 shall be the amount determined by reference to Table 3.

TABLE 3

**GROSS PREPAYMENT AMOUNT FOR
MAY 1, 2002 TO APRIL 30, 2003**

Zone	Building Square Feet	Gross Prepayment Amount ¹
1	≤ 1,150	\$12,971.17 per Detached/Attached Unit
1	1,151 – 1,400	\$14,715.14 per Detached/Attached Unit
1	> 1,400	\$15,960.84 per Detached/Attached Unit
2	≤ 1,850	\$10,333.15 per Detached/Attached Unit
2	1,851 – 2,000	\$11,578.85 per Detached/Attached Unit
2	2,001 – 2,250	\$12,824.55 per Detached/Attached Unit
2	> 2,250	\$13,655.01 per Detached/Attached Unit

¹ No Assigned Annual Special Tax shall apply to Affordable Units or Senior Citizen Units.

On each May 1, commencing May 1, 2003, the Gross Prepayment Amount for each Unit shall be increased by two percent (2.00%) of the amount in effect in the prior Fiscal Year, provided that the Gross Prepayment Amount applicable to a Unit shall not increase after the issuance of the Building Permit for such Unit.

2. Subsequent to Issuance of Bonds

Subsequent to the issuance of Bonds, the Prepayment Amount for each applicable Assessor's Parcel shall be calculated according to the following formula (capitalized terms defined below):

	Bond Redemption Amount
plus	Redemption Premium
plus	Defeasance
plus	Administrative Fee
less	<u>Reserve Fund Credit</u>
equals	Prepayment Amount

As of the date of prepayment, the Prepayment Amount shall be calculated as follows:

1. For each Assessor's Parcel of Taxable Developed Property, compute the Assigned Annual Special Tax and the Backup Annual Special Tax. For each Assessor's Parcel of Taxable Undeveloped Property, compute the Assigned Annual Special Tax and the Backup Annual Special Tax applicable to the Assessor's Parcel as though it was already designated as Taxable Developed Property, based upon the building permit issued for that Assessor's Parcel.

2. For each Annual Special Tax obligation to be prepaid, (a) divide the Assigned Annual Special Tax computed pursuant to paragraph 1 for such Assessor's Parcel by the estimated Assigned Annual Special Tax applicable to all Assessor's Parcels of Taxable Developed Property at buildout, as reasonably determined by the Associate Superintendent, and (b) divide the Backup Annual Special Tax computed pursuant to paragraph 1 for such Assessor's Parcel by the estimated Backup Annual Special Tax applicable to all Assessor's Parcels of Taxable Developed Property at buildout, as reasonably determined by the Associate Superintendent.
3. Multiply the larger quotient computed pursuant to paragraph 2(a) or 2(b) by the face value of all outstanding Bonds. The product is the "Bond Redemption Amount."
4. Multiply the Bond Redemption Amount by the applicable redemption premium, if any, on the outstanding Bonds to be redeemed with the proceeds of the Bond Redemption Amount. This product is the "Redemption Premium."
5. Compute the amount needed to pay interest on the Bond Redemption Amount, the Redemption Premium, and the Reserve Fund Credit (see step 9) to be redeemed with the proceeds of the Prepayment Amount until the earliest call date for the outstanding Bonds.
6. Estimate the amount of interest earnings to be derived from the reinvestment of the Bond Redemption Amount plus the Redemption Premium until the earliest call date for the outstanding Bonds.
7. Subtract the amount computed pursuant to paragraph 6 from the amount computed pursuant to paragraph 5. *This difference is the "Defeasance."*
8. Estimate the administrative fees and expenses associated with the prepayment, including the costs of computation of the Prepayment Amount, the costs of redeeming Bonds, and the costs of recording any notices to evidence the prepayment and the redemption. This amount is the "Administrative Fee."
9. Calculate the "Reserve Fund Credit" as the lesser of: (a) the expected reduction in the applicable reserve requirements, if any, associated with the redemption of outstanding Bonds as a result of the prepayment, or (b) the amount derived by subtracting the new reserve requirements in effect after the redemption of outstanding Bonds as a result of the prepayment from the balance in the applicable reserve funds on the prepayment date. Notwithstanding the foregoing, if the reserve fund requirement is satisfied by a surety bond or other instrument at the time of the prepayment, then no Reserve Fund Credit shall be given. Notwithstanding the foregoing, the Reserve Fund Credit shall in no event be less than 0.

10. The Prepayment Amount is equal to the sum of the Bond Redemption Amount, the Redemption Premium, the Defeasance, and the Administrative Fee, less the Reserve Fund Credit.

With respect to an Annual Special Tax obligation that is prepaid pursuant to this Section G, the Associate Superintendent shall indicate in the records of IA C of CFD No. 10 that there has been a prepayment of the Annual Special Tax obligation and shall cause a suitable notice to be recorded in compliance with the Act within thirty (30) days of receipt of such prepayment to indicate the prepayment of the Annual Special Tax obligation and the release of the Annual Special Tax lien on such Assessor's Parcel, and the obligation of such Assessor's Parcel to pay such Annual Special Tax shall cease.

Notwithstanding the foregoing, no prepayment will be allowed unless the amount of Annual Special Tax that may be levied in IA C of CFD No. 10, net of an allocable portion of Administrative Expenses, shall be at least 1.1 times the regularly scheduled annual interest and principal payments on all currently outstanding Bonds in each future Fiscal Year, as reasonably determined by the Associate Superintendent.

SECTION H PARTIAL PREPAYMENT OF SPECIAL TAX

Prior to the issuance of a Building Permit for the construction of a production Unit on a Lot within a Final Subdivision Map area, the owner of no less than the entire Final Subdivision Map area may elect to prepay any portion of the applicable Annual Special Tax obligations for all of the Assessor's Parcels within such Final Subdivision Map area. In order to prepay any portion of the applicable Annual Special Tax obligations, the residential Final Subdivision Map area must contain at least 25 Detached Units or 50 Attached Units. The partial prepayment of each Annual Special Tax obligation shall be collected at the issuance of each applicable Building Permit, provided that the Annual Special Tax obligations with respect to model Units for which Building Permits have already been issued must be partially prepaid at the time of the election. The Partial Prepayment Amount shall be calculated according to the following formula:

$$PP = P_G * F$$

These terms have the following meanings:

PP = the Partial Prepayment Amount
P_G = the Prepayment Amount calculated according to Section G
F = the percent by which the owner of the Assessor's Parcel is partially prepaying the Annual Special Tax obligation.

The owner of any Assessor's Parcel who desires such partial prepayment shall notify the Associate Superintendent of (i) such owner's intent to partially prepay the Annual Special Tax obligation and (ii) the percentage by which the Annual Special Tax obligation shall be prepaid.

With respect to any Assessor's Parcel's Annual Special Tax obligation that is partially prepaid, the Associate Superintendent shall indicate in the records of IA C of CFD No. 10 that there has been a partial prepayment of the Annual Special Tax obligation and shall cause a suitable notice to be recorded in compliance with the Act within thirty (30) days of receipt of such partial prepayment, to indicate the partial prepayment of Annual Special Tax obligation and the partial release of the

Annual Special Tax lien on such Assessor's Parcel, and the obligation of such Assessor's Parcel to pay such prepaid portion of the Annual Special Tax shall cease. Additionally, the notice shall indicate that the Assigned Annual Special Tax and the Backup Annual Special Tax for the Assessor's Parcels has been reduced by an amount equal to the percentage which was partially prepaid.

Notwithstanding the foregoing, no partial prepayment will be allowed unless the amount of Annual Special Tax that may be levied in IA C of CFD No. 10, net of an allocable portion of Administrative Expenses, shall be at least 1.1 times the regularly scheduled annual interest and principal payments on all currently outstanding Bonds in each future Fiscal Year, as reasonably determined by the Associate Superintendent.

SECTION I TERMINATION OF SPECIAL TAX

The Annual Special Tax shall be levied for a term of thirty-four (34) Fiscal Years after the issuance of Bonds by IA C of CFD No. 10, but in no event shall the Annual Special Tax be levied later than Fiscal Year 2045-46.

SECTION J EXEMPTIONS

The Associate Superintendent shall classify as Exempt Property (i) Assessor's Parcels owned by the State of California, Federal or other local governments, (ii) Assessor's Parcels which are used as places of worship and are exempt from *ad valorem* property taxes because they are owned by a religious organization, (iii) Assessor's Parcels used exclusively by a homeowners' association, (iv) Assessor's Parcels with public or utility easements or other restrictions making impractical their utilization for other than the purposes set forth in the easement or the restriction, (v) Assessor's Parcels for which Building Permits were issued on or before May 1 of the prior Fiscal Year for the construction of Affordable Units and/or Senior Citizen Units exclusively, (vi) Assessor's Parcels for which Building Permits were issued on or before May 1 of the prior Fiscal Year for the construction of GFA and Assessor's Parcels which directly service such Assessor's Parcels, such as parking lots, as reasonably determined by the Associate Superintendent, and (vii) other types of Assessor's Parcels, at the reasonable discretion of the Associate Superintendent, provided that no such classification would reduce the Acreage of all Taxable Property in any Zone to less than the Minimum Taxable Acreage for such Zone. Assessor's Parcels which cannot be classified as Exempt Property because such classification would reduce the Acreage of all Taxable Property in a Zone to less than the Minimum Taxable Acreage for such Zone will continue to be classified as Taxable Developed Property or Taxable Undeveloped Property, as applicable, and will continue to be subject to Special Taxes accordingly.

TABLE 4

MINIMUM TAXABLE ACREAGE

Zone	Minimum Taxable Acreage
Zone 1	4.14
Zone 2	7.94

**SECTION K
APPEALS**

Any property owner claiming that the amount or application of any Special Tax is not correct may file a written notice of appeal with the Associate Superintendent not later than twelve (12) months after having paid the Special Tax that is disputed. The Associate Superintendent shall promptly review the appeal, and if necessary, meet with the property owner, consider written and oral evidence regarding the amount of the Special Tax, and rule on the appeal. If the Associate Superintendent's decision requires that the Special Tax for an Assessor's Parcel be modified or changed in favor of the property owner, a cash refund shall not be made (except for the last year of levy or in other special cases, as determined by the Associate Superintendent), but an adjustment shall be made to the Special Tax on that Assessor's Parcel in the subsequent Fiscal Year(s).

**SECTION L
MANNER OF COLLECTION**

The Annual Special Tax shall be collected in the same manner and at the same time as ordinary *ad valorem* property taxes, provided, however, that IA C of CFD No. 10 may collect Annual Special Taxes at a different time or in a different manner if necessary to meet its financial obligations.

Exhibit B

CFD Boundary Map

PROPOSED BOUNDARIES OF POWAY UNIFIED SCHOOL DISTRICT COMMUNITY FACILITIES DISTRICT NO. 10 SAN DIEGO COUNTY STATE OF CALIFORNIA

- (1) Filed in the office of the Secretary to the Board of Education this 16th day of April, 2001.

John R. Call
Secretary of the Board of Education

- (2) I hereby certify that the within map showing the proposed boundaries of Community Facilities District No. 10, San Diego County, State of California, was approved by the Board of Education at a regular meeting thereof, held on this 16th day of April, 2001, by its Resolution No. 42-2001.

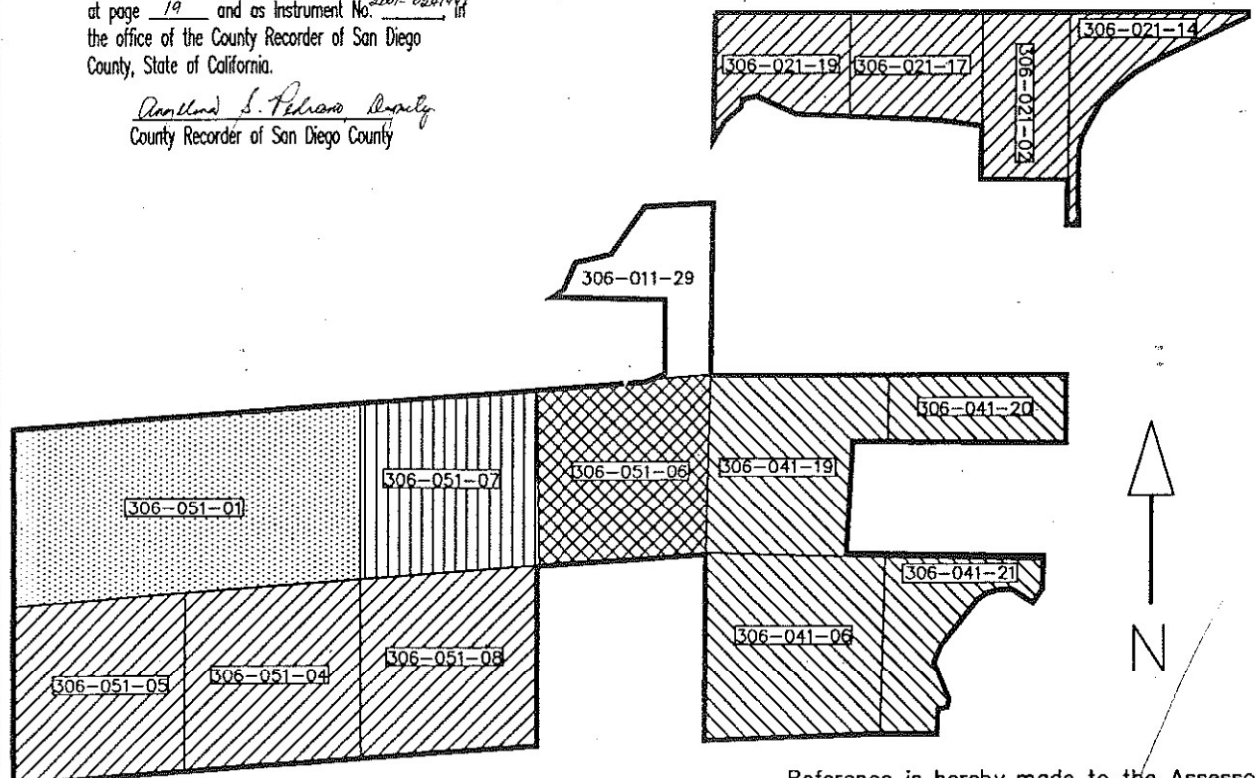
John R. Call
Secretary of the Board of Education

- (3) Filed this 19th day of APRIL, 2001, at the hour of 10:35 o'clock A.M., in Book 35 of Maps of Assessment and Community Facilities Districts at page 19 and as Instrument No. 2001-0241418 in the office of the County Recorder of San Diego County, State of California.

David L. Pelham
County Recorder of San Diego County

LEGEND

	CFD Boundary
	Assessor Parcel Boundary
nnn-nnn-nn	Assessor Parcel Number
	Improvement Area A
	Improvement Area B
	Improvement Area C
	Improvement Area D
	Improvement Area E
	Improvement Area F



PREPARED BY
DAVID TAUSSIG & ASSOCIATES, INC.

Reference is hereby made to the Assessor maps of the County of San Diego for an exact description of the lines and dimensions of each lot and parcel.

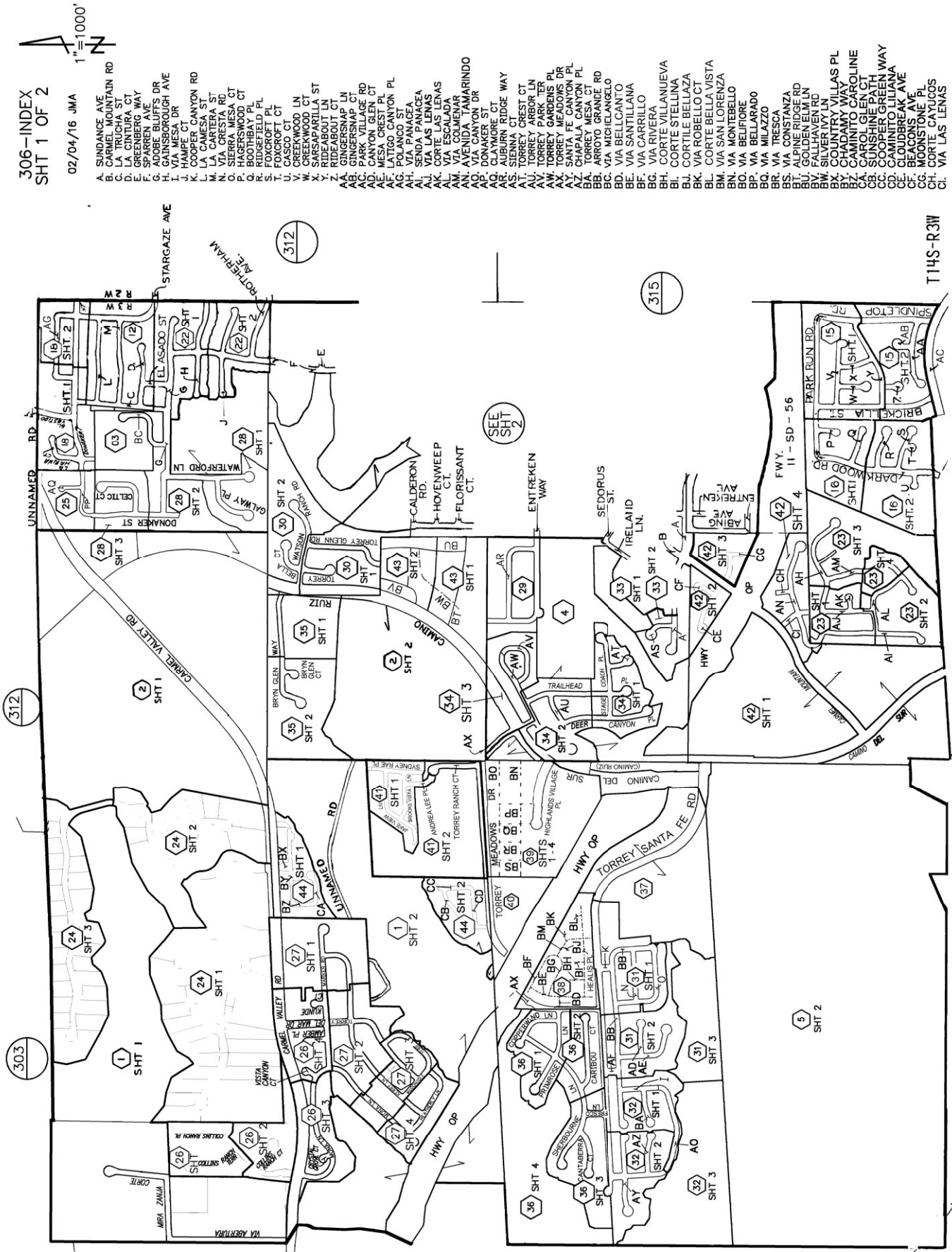
BK 35 PG 19

2001-0241418

Exhibit C

Assessor's Parcel Maps

309



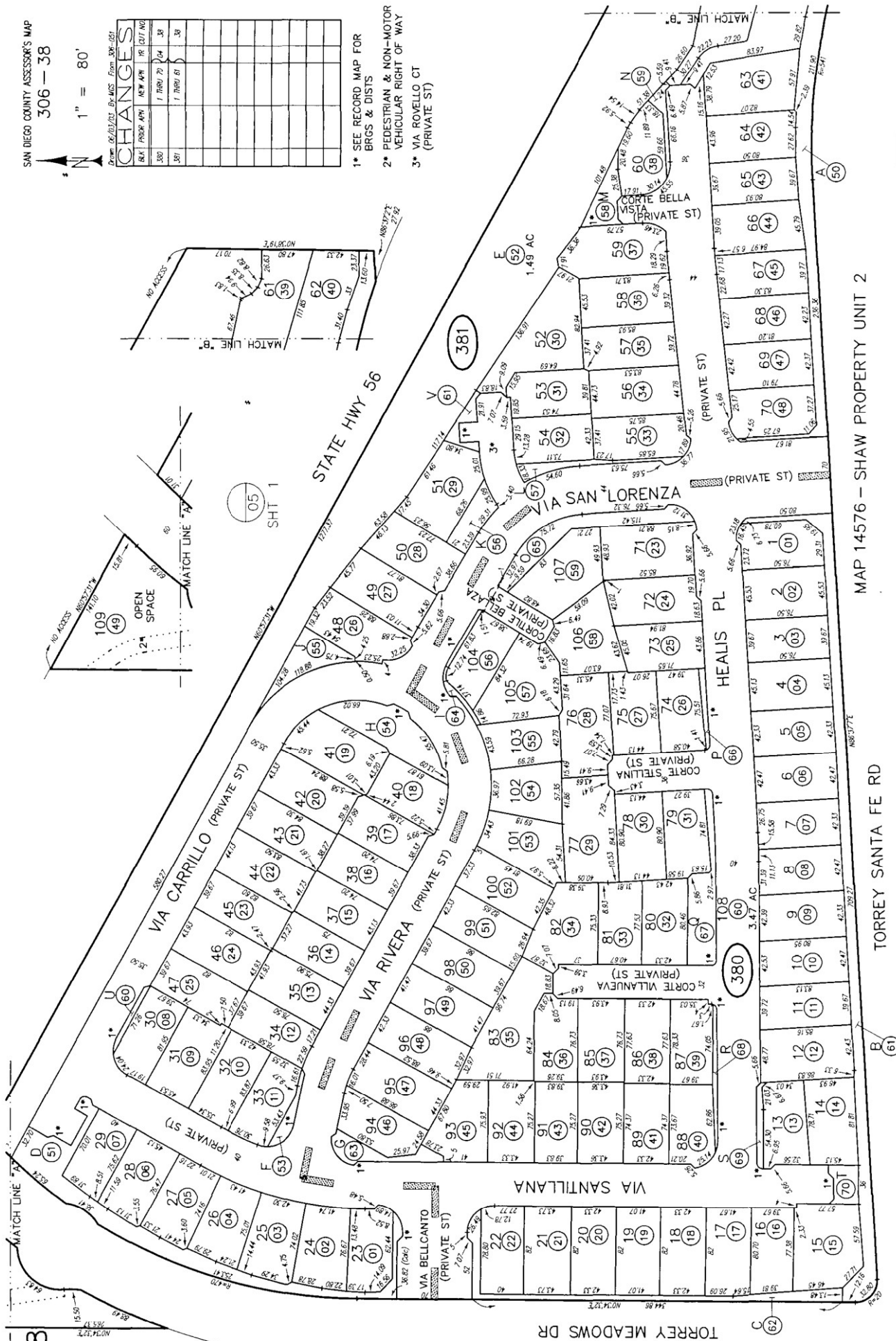
$$1'' = 80'$$

CHANGES						
BLK	PROG	APN	NEW APN	TR	DTY	MC
380			1 THRU 70	64	38	
381			1 THRU 61	63	38	

1* SEE RECORD MAP FOR
BRGS & DIST

2* PEDESTRIAN & NON-MOTOR
VEHICULAR RIGHT OF WAY

3* VIA ROVELLO CT
(PRIVATE ST)



08

SAN DIEGO COUNTY ASSESSOR'S MAP
306-40

1" = 100'

12/18/03 JAM

Drawn: 07/30/03 By: JAM From: 306-051

CHANGES				
BLK	PROJ	APN	NEW APN	PR
400			01 THRU 04	04
			05	04
			06 THRU 12	04
			13 THRU 15	04
			16 THRU 17	04
			18 THRU 19	04
			20 THRU 21	04
			22 THRU 23	04
			24 THRU 25	04
			26 THRU 27	04
			28 THRU 29	04
			30 THRU 31	04
			32 THRU 33	04
			34 THRU 35	04
			36 THRU 37	04
			38 THRU 39	04
			40 THRU 41	04
			42 THRU 43	04
			44 THRU 45	04
			46 THRU 47	04
			48 THRU 49	04
			50 THRU 51	04
			52 THRU 53	04
			54 THRU 55	04
			56 THRU 57	04
			58 THRU 59	04
			60 THRU 61	04
			62 THRU 63	04
			64 THRU 65	04
			66 THRU 67	04
			68 THRU 69	04
			70 THRU 71	04
			72 THRU 73	04
			74 THRU 75	04
			76 THRU 77	04
			78 THRU 79	04
			80 THRU 81	04
			82 THRU 83	04
			84 THRU 85	04
			86 THRU 87	04
			88 THRU 89	04
			90 THRU 91	04
			92 THRU 93	04
			94 THRU 95	04
			96 THRU 97	04
			98 THRU 99	04
			100 THRU 101	04
			102 THRU 103	04
			104 THRU 105	04
			106 THRU 107	04
			108 THRU 109	04
			110 THRU 111	04
			112 THRU 113	04
			114 THRU 115	04
			116 THRU 117	04
			118 THRU 119	04
			120 THRU 121	04
			122 THRU 123	04
			124 THRU 125	04
			126 THRU 127	04
			128 THRU 129	04
			130 THRU 131	04
			132 THRU 133	04
			134 THRU 135	04
			136 THRU 137	04
			138 THRU 139	04
			140 THRU 141	04
			142 THRU 143	04
			144 THRU 145	04
			146 THRU 147	04
			148 THRU 149	04
			150 THRU 151	04
			152 THRU 153	04
			154 THRU 155	04
			156 THRU 157	04
			158 THRU 159	04
			160 THRU 161	04
			162 THRU 163	04
			164 THRU 165	04
			166 THRU 167	04
			168 THRU 169	04
			170 THRU 171	04
			172 THRU 173	04
			174 THRU 175	04
			176 THRU 177	04
			178 THRU 179	04
			180 THRU 181	04
			182 THRU 183	04
			184 THRU 185	04
			186 THRU 187	04
			188 THRU 189	04
			190 THRU 191	04
			192 THRU 193	04
			194 THRU 195	04
			196 THRU 197	04
			198 THRU 199	04
			200 THRU 201	04
			202 THRU 203	04
			204 THRU 205	04
			206 THRU 207	04
			208 THRU 209	04
			210 THRU 211	04
			212 THRU 213	04
			214 THRU 215	04
			216 THRU 217	04
			218 THRU 219	04
			220 THRU 221	04
			222 THRU 223	04
			224 THRU 225	04
			226 THRU 227	04
			228 THRU 229	04
			230 THRU 231	04
			232 THRU 233	04
			234 THRU 235	04
			236 THRU 237	04
			238 THRU 239	04
			240 THRU 241	04
			242 THRU 243	04
			244 THRU 245	04
			246 THRU 247	04
			248 THRU 249	04
			250 THRU 251	04
			252 THRU 253	04
			254 THRU 255	04
			256 THRU 257	04
			258 THRU 259	04
			260 THRU 261	04
			262 THRU 263	04
			264 THRU 265	04
			266 THRU 267	04
			268 THRU 269	04
			270 THRU 271	04
			272 THRU 273	04
			274 THRU 275	04
			276 THRU 277	04
			278 THRU 279	04
			280 THRU 281	04
			282 THRU 283	04
			284 THRU 285	04
			286 THRU 287	04
			288 THRU 289	04
			290 THRU 291	04
			292 THRU 293	04
			294 THRU 295	04
			296 THRU 297	04
			298 THRU 299	04
			300 THRU 301	04
			302 THRU 303	04
			304 THRU 305	04
			306 THRU 307	04
			308 THRU 309	04
			310 THRU 311	04
			312 THRU 313	04
			314 THRU 315	04
			316 THRU 317	04
			318 THRU 319	04
			320 THRU 321	04
			322 THRU 323	04
			324 THRU 325	04
			326 THRU 327	04
			328 THRU 329	04
			330 THRU 331	04
			332 THRU 333	04
			334 THRU 335	04
			336 THRU 337	04
			338 THRU 339	04
			340 THRU 341	04
			342 THRU 343	04
			344 THRU 345	04
			346 THRU 347	04
			348 THRU 349	04
			350 THRU 351	04
			352 THRU 353	04
			354 THRU 355	04
			356 THRU 357	04
			358 THRU 359	04
			360 THRU 361	04
			362 THRU 363	04
			364 THRU 365	04
			366 THRU 367	04
			368 THRU 369	04
			370 THRU 371	04
			372 THRU 373	04
			374 THRU 375	04
			376 THRU 377	04
			378 THRU 379	04
			380 THRU 381	04
			382 THRU 383	04
			384 THRU 385	04
			386 THRU 387	04
			388 THRU 389	04
			390 THRU 391	04
			392 THRU 393	04
			394 THRU 395	04
			396 THRU 397	04
			398 THRU 399	04
			400 THRU 401	04
			402 THRU 403	04
			404 THRU 405	04
			406 THRU 407	04
			408 THRU 409	04
			410 THRU 411	04
			412 THRU 413	04
			414 THRU 415	04
			416 THRU 417	04
			418 THRU 419	04
			420 THRU 421	04
			422 THRU 423	04
			424 THRU 425	04
			426 THRU 427	04
			428 THRU 429	04
			430 THRU 431	04
			432 THRU 433	04
			434 THRU 435	04
			436 THRU 437	04
			438 THRU 439	04
			440 THRU 441	04
			442 THRU 443	04
			444 THRU 445	04
			446 THRU 447	04
			448 THRU 449	04
			450 THRU 451	04
			452 THRU 453	04
			454 THRU 455	04
			456 THRU 457	04
			458 THRU 459	04
			460 THRU 461	04
			462 THRU 463	04
			464 THRU 465	04
			466 THRU 467	04
			468 THRU 469	04
			470 THRU 471	04
			472 THRU 473	04
			474 THRU 475	04
			476 THRU 477	04
			478 THRU 479	04
			480 THRU 481	04
			482 THRU 483	04
			484 THRU 485	04
			486 THRU 487	04
			488 THRU 489	04
			490 THRU 491	04
			492 THRU 493	04
			494 THRU 495	04
			496 THRU 497	04
			498 THRU 499	04
			500 THRU 501	04
			502 THRU 503	04
			504 THRU 505	04
			506 THRU 507	04
			508 THRU 509	04
			510 THRU 511	04
			512 THRU 513	04
			514 THRU 515	04
			516 THRU 517	04
			518 THRU 519	04
			520 THRU 521	04
			522 THRU 523	04
			524 THRU 525	04
			526 THRU 527	04
			528 THRU 529	04
			530 THRU 531	04
			532 THRU 533	04
			534 THRU 535	04
			536 THRU 537	04
			538 THRU 539	04
			540 THRU 541	04
			542 THRU 543	04
			544 THRU 545	04
			546 THRU 547	04
			548 THRU 549	04
			550 THRU 551	04
			552 THRU 553	04
			554 THRU 555	04
			556 THRU 557	04
			558 THRU 559	04
			560 THRU 561	04
			562 THRU 563	04
			564 THRU 565	04
			566 THRU 567	04
			568 THRU 569	04
			570 THRU 571	04
			572 THRU 573	04
			574 THRU 575	04
			576 THRU 577	04
			578 THRU 579	04
			580 THRU 581	04
			582 THRU 583	04
			584 THRU 585	04
			586 THRU 587	04
			588 THRU 589	04
			590 THRU 591	04
			592 THRU 593	04
			594 THRU 595	04
			596 THRU 597	04
			598 THRU 599	04
			600 THRU 601	04
			602 THRU 603	04
			604 THRU 605	04
			606 THRU 607	04
			608 THRU 609	04
			610 THRU 611	04
			612 THRU 613	04
			614 THRU 615	04
			616 THRU 617	04
			618 THRU 619	04
			620 THRU 621	04
			622 THRU 623	04
			624 THRU 625	04
			626 THRU 627	04
			628 THRU 629	04
			630 THRU 631	04
			632 THRU 633	04
			634 THRU 635	04
			636 THRU 637	04
			638 THRU 639	04
			640 THRU 641	04
			642 THRU 643	04
			644 THRU 645	04
			646 THRU 647	04
			648 THRU 649	04
			650 THRU 651	04
			652 THRU 653	04
			654 THRU 655	04

Exhibit D

Special Tax Refunding Bonds, Series 2022

Debt Service Schedule

Poway Unified School District
Improvement Area C of Community Facilities District No. 10
Series 2022 Special Tax Refunding Bonds
Debt Service Schedule

Period Ending	Series 2022 Special Tax Refunding Bonds		Semi-Annual Debt Service Payment	Annual Debt Service Payment
	Principal	Interest		
3/1/2025	\$0.00	\$26,812.50	\$26,812.50	198,625.00
9/1/2025	145,000.00	26,812.50	171,812.50	
3/1/2026	0.00	24,420.00	24,420.00	203,840.00
9/1/2026	155,000.00	24,420.00	179,420.00	
3/1/2027	0.00	21,862.50	21,862.50	208,725.00
9/1/2027	165,000.00	21,862.50	186,862.50	
3/1/2028	0.00	19,140.00	19,140.00	203,280.00
9/1/2028	165,000.00	19,140.00	184,140.00	
3/1/2029	0.00	16,417.50	16,417.50	212,835.00
9/1/2029	180,000.00	16,417.50	196,417.50	
3/1/2030	0.00	13,447.50	13,447.50	216,895.00
9/1/2030	190,000.00	13,447.50	203,447.50	
3/1/2031	0.00	10,312.50	10,312.50	220,625.00
9/1/2031	200,000.00	10,312.50	210,312.50	
3/1/2032	0.00	7,012.50	7,012.50	219,025.00
9/1/2032	205,000.00	7,012.50	212,012.50	
3/1/2033	0.00	3,630.00	3,630.00	227,260.00
9/1/2033	220,000.00	3,630.00	223,630.00	
Total	\$1,625,000.00	\$286,110.00	\$1,911,110.00	\$1,911,110.00

Exhibit E

Delinquent Annual Special Tax Report



Fixed Charge Special Assessment Delinquency Report

Year End Report for Fiscal Year 2024/2025

Improvement Area C of Poway Unified School District Community Facilities District No. 10



Summary

Year End

Total Taxes Due June 30, 2025	\$361,446.86
Amount Paid	\$360,371.07
Amount Remaining to be Collected	\$1,075.79
Number of Parcels Delinquent	1
Delinquency Rate	0.30%

Foreclosure

CFD Subject to Foreclosure Covenant:	Yes
Foreclosure Notification Date	October 1st
Foreclosure Determination Date	November 15th
Foreclosure Commencement Date	December 30th

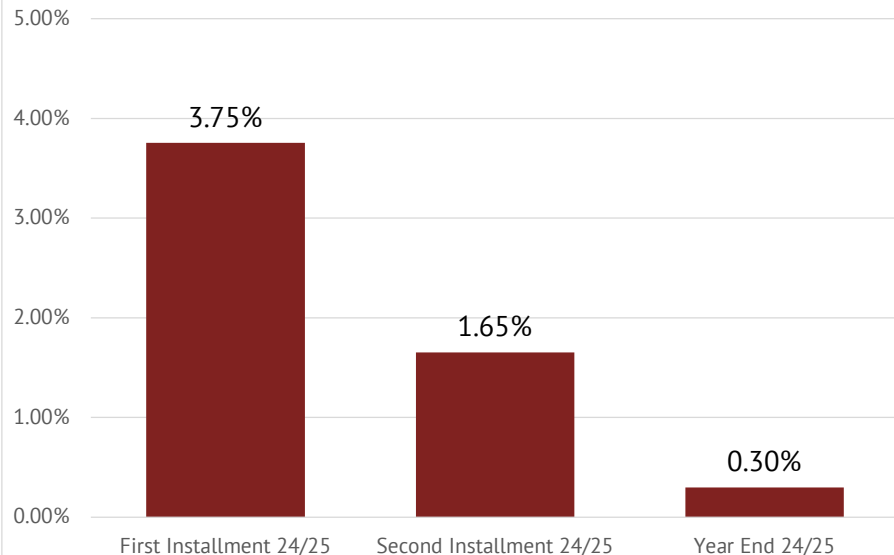
Foreclosure Qualification

Individual Parcel Delinquency	\$7,500
Individual Owner Multiple Parcels Delinquency	\$15,000
Individual Parcels Semi-Annual Installments	N/A
Aggregate Delinquency Rate	5%

Parcels Qualifying for Foreclosure

Parcels Exceeding Individual Foreclosure Threshold	0
Parcels Exceeding CFD Aggregate	0
Pursuant to the Foreclosure Covenant in the Bond Indenture, there is no requirement to initiate Foreclosure Proceedings for aggregate delinquencies if such delinquencies do not create a draw on the Reserve Fund that would bring it below the Reserve Requirement.	

Year End
Delinquency Rate Comparison





Fixed Charge Special Assessment Delinquency Report

Year End Report for Fiscal Year 2024/2025

Improvement Area C of Poway Unified School District Community Facilities District No. 10



Historical Delinquency Summary

Fiscal Year	Subject Fiscal Year					June 30, 2025	
	Aggregate Special Tax	Parcels Delinquent [1]	Amount Collected	Amount Delinquent	Delinquency Rate	Remaining Amount Delinquent	Remaining Delinquency Rate
2020/2021	\$340,740.00	N/A	\$338,988.00	\$1,752.00	0.51%	\$0.00	0.00%
2021/2022	345,766.00	N/A	341,800.00	3,966.00	1.15%	0.00	0.00%
2022/2023	352,680.42	1	351,866.79	813.63	0.23%	0.00	0.00%
2023/2024	359,739.64	0	359,739.64	0.00	0.00%	0.00	0.00%
2024/2025	361,446.86	1	360,371.07	1,075.79	0.30%	1,075.79	0.30%

[1] Information not provided by previous administrator for Fiscal Years 2020/2021 through 2021/2022.

Historical Delinquency Rate

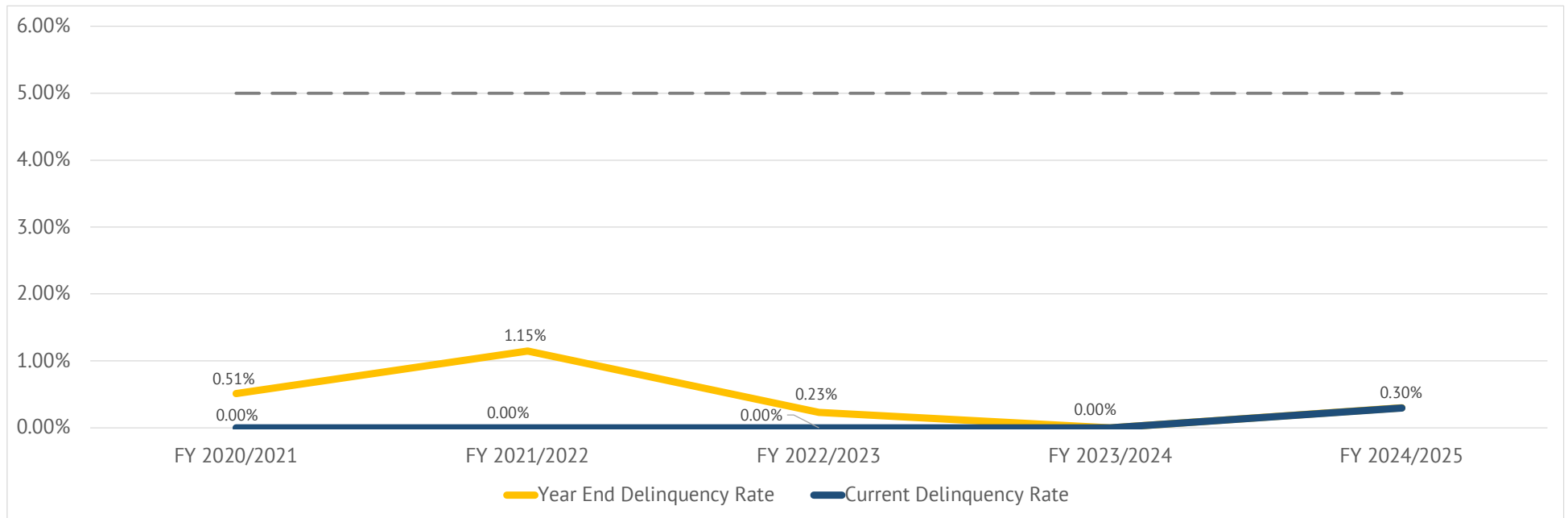


Exhibit F

Summary of Transactions for Fiscal Agent Accounts

Fund: CFD No. 10 Improvement Area C

Subfund: 7150944A - Special Tax Fund (Series 2022)

Date	Interest	Deposits	Transfers In	Transfers Out	Expenditures	Balance	Payee	Reference	Description
07-01-2024	\$19,589.42	\$994,375.20	\$22.45	(\$697,693.58)	\$0.00	\$316,293.49			BEGINNING BALANCE
07-01-2024	\$1,276.38					\$317,569.87		Interest	Interest Earnings
07-22-2024		\$153.74				\$317,723.61		Deposit	Special Tax Deposit
08-01-2024	\$1,337.93					\$319,061.54		Interest	Interest Earnings
09-03-2024	\$1,343.46					\$320,405.00		Interest	Interest Earnings
09-03-2024				(\$29,287.50)		\$291,117.50		Transfer Out	Transfer To 7150944B Interest Account
09-03-2024				(\$125,000.00)		\$166,117.50		Transfer Out	Transfer To 7150944C Principal Account
09-04-2024				(\$166,117.50)		\$0.00		Transfer Out	Transfer To 7150939U Rental Payment Surplus Account
10-01-2024	\$109.04					\$109.04		Interest	Interest Earnings
10-16-2024		\$948.29				\$1,057.33		Deposit	Special Tax Deposit
11-01-2024	\$2.28					\$1,059.61		Interest	Interest Earnings
11-20-2024		\$31,477.92				\$32,537.53		Deposit	Special Tax Deposit
12-02-2024	\$44.18					\$32,581.71		Interest	Interest Earnings
12-16-2024		\$75,198.24				\$107,779.95		Deposit	Special Tax Deposit
01-02-2025	\$252.15					\$108,032.10		Interest	Interest Earnings
01-15-2025		\$86,647.42				\$194,679.52		Deposit	Special Tax Deposit
01-17-2025				(\$22,735.00)		\$171,944.52		Transfer Out	Transfer To 7150944I Administrative Expense Fund
02-03-2025	\$493.46					\$172,437.98		Interest	Interest Earnings
02-19-2025		\$9,927.40				\$182,365.38		Deposit	Special Tax Deposit
03-03-2025	\$540.46					\$182,905.84		Interest	Interest Earnings
03-03-2025				(\$26,783.39)		\$156,122.45		Transfer Out	Transfer To 7150944B Interest Account
03-19-2025		\$18,137.32				\$174,259.77		Deposit	Special Tax Deposit
04-01-2025	\$557.99					\$174,817.76		Interest	Interest Earnings
04-21-2025		\$117,455.76				\$292,273.52		Deposit	Special Tax Deposit
05-01-2025	\$698.31					\$292,971.83		Interest	Interest Earnings
05-14-2025		\$17,398.49				\$310,370.32		Deposit	Special Tax Deposit
06-02-2025	\$1,013.85					\$311,384.17		Interest	Interest Earnings
06-18-2025		\$2,074.08				\$313,458.25		Deposit	Special Tax Deposit
	\$7,669.49	\$359,418.66	\$0.00	(\$369,923.39)	\$0.00	(\$2,835.24)			DATE RANGE BALANCE
Subfund Total	\$27,258.91	\$1,353,793.86	\$22.45	(\$1,067,616.97)	\$0.00	\$313,458.25	Total for 7150944A - Special Tax Fund (Series 2022)		

Subfund: 7150944B - Interest Account (Series 2022)

Date	Interest	Deposits	Transfers In	Transfers Out	Expenditures	Balance	Payee	Reference	Description
07-01-2024	\$54.49	\$0.00	\$119,851.75	\$0.00	(\$119,878.00)	\$28.24			BEGINNING BALANCE
07-01-2024	\$0.11					\$28.35		Interest	Interest Earnings
08-01-2024	\$0.12					\$28.47		Interest	Interest Earnings
09-03-2024					(\$29,287.50)	(\$29,259.03)	Cede & Company	Debt Service Interest	Debt Service Interest
09-03-2024			\$29,287.50			\$28.47		Transfer In	Transfer From 7150944A Special Tax Fund
09-03-2024	\$0.12					\$28.59		Interest	Interest Earnings
10-01-2024	\$0.11					\$28.70		Interest	Interest Earnings

Subfund: 7150944B - Interest Account (Series 2022)

Date	Interest	Deposits	Transfers In	Transfers Out	Expenditures	Balance	Payee	Reference	Description
11-01-2024	\$0.11					\$28.81		Interest	Interest Earnings
12-02-2024	\$0.10					\$28.91		Interest	Interest Earnings
01-02-2025	\$0.10					\$29.01		Interest	Interest Earnings
02-03-2025	\$0.10					\$29.11		Interest	Interest Earnings
03-03-2025					(\$26,812.50)	(\$26,783.39)	Cede & Company	Debt Service Interest	Debt Service Interest
03-03-2025			\$26,783.39			\$0.00		Transfer In	Transfer From 7150944A Special Tax Fund
03-03-2025	\$0.09					\$0.09		Interest	Interest Earnings
04-01-2025	\$0.01					\$0.10		Interest	Interest Earnings
	\$0.97	\$0.00	\$56,070.89	\$0.00	(\$56,100.00)	(\$28.14)			DATE RANGE BALANCE
Subfund Total	\$55.46	\$0.00	\$175,922.64	\$0.00	(\$175,978.00)	\$0.10	Total for 7150944B - Interest Account (Series 2022)		

Subfund: 7150944C - Principal Account (Series 2022)

Date	Interest	Deposits	Transfers In	Transfers Out	Expenditures	Balance	Payee	Reference	Description
07-01-2024	\$0.00	\$0.00	\$210,000.00	\$0.00	(\$210,000.00)	\$0.00			BEGINNING BALANCE
09-03-2024					(\$125,000.00)	(\$125,000.00)	Cede & Company	Debt Service Principal	Debt Service Principal
09-03-2024			\$125,000.00			\$0.00		Transfer In	Transfer From 7150944A Special Tax Fund
	\$0.00	\$0.00	\$125,000.00	\$0.00	(\$125,000.00)	\$0.00			DATE RANGE BALANCE
Subfund Total	\$0.00	\$0.00	\$335,000.00	\$0.00	(\$335,000.00)	\$0.00	Total for 7150944C - Principal Account (Series 2022)		

Subfund: 7150944I - Administrative Expense Fund (Series 2022)

Date	Interest	Deposits	Transfers In	Transfers Out	Expenditures	Balance	Payee	Reference	Description
07-01-2024	\$3,951.07	\$63,662.73	\$44,146.88	\$0.00	(\$59,695.84)	\$52,064.84			BEGINNING BALANCE
07-01-2024	\$211.80					\$52,276.64		Interest	Interest Earnings
08-01-2024	\$220.21					\$52,496.85		Interest	Interest Earnings
08-12-2024					(\$1,000.00)	\$51,496.85	Zions First National	Professional Services	Req. No. 944I-2425-0001 Admin Fee June 2024 - May 2025 Invoice No. 12247
08-20-2024					(\$13,000.00)	\$38,496.85	Poway Unified School District	Professional Services	Req# 944I-2425-0002 Inv# 2023-2024 Memo
09-03-2024	\$197.14					\$38,693.99		Interest	Interest Earnings
10-01-2024	\$152.60					\$38,846.59		Interest	Interest Earnings
11-01-2024	\$148.66					\$38,995.25		Interest	Interest Earnings
12-02-2024	\$138.29					\$39,133.54		Interest	Interest Earnings
01-02-2025	\$139.18					\$39,272.72		Interest	Interest Earnings
01-17-2025			\$22,735.00			\$62,007.72		Transfer In	Transfer From 7150944A Special Tax Fund
02-03-2025	\$171.66					\$62,179.38		Interest	Interest Earnings
03-03-2025	\$190.96					\$62,370.34		Interest	Interest Earnings
04-01-2025	\$210.33					\$62,580.67		Interest	Interest Earnings
04-10-2025					(\$20,000.00)	\$42,580.67	Poway Unified School District	Professional Services	Req#944I-2425-0003 dtd 04-09-25 Inv#2024-2025 Memo dtd 04-08-25-2024-2025 Memo
04-28-2025					(\$147.00)	\$42,433.67	Zions First National	Professional Services	Req. No. 944I-2425-0004 Trustee Services Annual Admin Mar 25 - Feb 26 Invoice No. 12971
04-28-2025					(\$1,950.00)	\$40,483.67	Zions First National	Professional Services	Req. No. 944I-2425-0004 Fiscal Agent Services Annual Admin Mar 25 - Feb 26 Invoice No. 12974
05-01-2025	\$157.99					\$40,641.66		Interest	Interest Earnings
06-02-2025	\$135.96					\$40,777.62		Interest	Interest Earnings
	\$2,074.78	\$0.00	\$22,735.00	\$0.00	(\$36,097.00)	(\$11,287.22)			DATE RANGE BALANCE
Subfund Total	\$6,025.85	\$63,662.73	\$66,881.88	\$0.00	(\$95,792.84)	\$40,777.62	Total for 7150944I - Administrative Expense Fund (Series 2022)		

Subfund: 7150944P - Purchase Transfer Account (Series 2022)

Date	Interest	Deposits	Transfers In	Transfers Out	Expenditures	Balance	Payee	Reference	Description
07-01-2024	\$0.00	\$1,941,319.70	\$0.00	(\$1,941,319.70)	\$0.00	\$0.00			BEGINNING BALANCE
	\$0.00	\$0.00	\$0.00	\$0.00	\$0.00	\$0.00			DATE RANGE BALANCE
Subfund Total	\$0.00	\$1,941,319.70	\$0.00	(\$1,941,319.70)	\$0.00	\$0.00	Total for 7150944P - Purchase Transfer Account (Series 2022)		

Subfund: 7150944R - Redemption Fund (Series 2022)

Date	Interest	Deposits	Transfers In	Transfers Out	Expenditures	Balance	Payee	Reference	Description
07-01-2024	\$165.09	\$27,404.94	\$0.08	\$0.00	\$0.00	\$27,570.11			BEGINNING BALANCE
07-01-2024	\$112.17					\$27,682.28		Interest	Interest Earnings
08-01-2024	\$116.61					\$27,798.89		Interest	Interest Earnings
09-03-2024					(\$25,000.00)	\$2,798.89	Cede & Company	Debt Service Principal	Debt Service Principal
09-03-2024	\$117.05					\$2,915.94		Interest	Interest Earnings
10-01-2024	\$18.26					\$2,934.20		Interest	Interest Earnings
11-01-2024	\$11.23					\$2,945.43		Interest	Interest Earnings
12-02-2024	\$10.45					\$2,955.88		Interest	Interest Earnings
01-02-2025	\$10.51					\$2,966.39		Interest	Interest Earnings
02-03-2025	\$10.13					\$2,976.52		Interest	Interest Earnings
03-03-2025	\$9.14					\$2,985.66		Interest	Interest Earnings
04-01-2025	\$10.07					\$2,995.73		Interest	Interest Earnings
05-01-2025	\$9.78					\$3,005.51		Interest	Interest Earnings
06-02-2025	\$10.05					\$3,015.56		Interest	Interest Earnings
	\$445.45	\$0.00	\$0.00	\$0.00	(\$25,000.00)	(\$24,554.55)			DATE RANGE BALANCE
Subfund Total	\$610.54	\$27,404.94	\$0.08	\$0.00	(\$25,000.00)	\$3,015.56	Total for 7150944R - Redemption Fund (Series 2022)		
Fund Total	\$33,950.76	\$3,386,181.23	\$577,827.05	(\$3,008,936.67)	(\$631,770.84)	\$357,251.53	Total for CFD No. 10 Improvement Area C		
Grand Total	\$33,950.76	\$3,386,181.23	\$577,827.05	(\$3,008,936.67)	(\$631,770.84)	\$357,251.53	Grand Total for Selected Funds/SubFunds		

Exhibit G

Annual Special Tax Roll for Fiscal Year 2025/2026

Poway Unified School District
Community Facilities District No. 10 Improvement Area C
Fiscal Year 2025/2026 Special Tax Roll

Tract	Lot	Assessor's Parcel Number	Maximum Special Tax	Assigned Special Tax
14576	1	306-380-01-00	\$1,726.86	\$1,726.86
14576	2	306-380-02-00	\$2,036.50	\$2,036.50
14576	3	306-380-03-00	\$1,912.64	\$1,912.64
14576	4	306-380-04-00	\$2,036.50	\$2,036.50
14576	5	306-380-05-00	\$1,541.08	\$1,541.08
14576	6	306-380-06-00	\$1,726.86	\$1,726.86
14576	7	306-380-07-00	\$1,541.08	\$1,541.08
14576	8	306-380-08-00	\$1,726.86	\$1,726.86
14576	9	306-380-09-00	\$2,036.50	\$2,036.50
14576	10	306-380-10-00	\$1,912.64	\$1,912.64
14576	11	306-380-11-00	\$1,912.64	\$1,912.64
14576	12	306-380-12-00	\$1,541.08	\$1,541.08
14576	13	306-380-13-00	\$1,912.64	\$1,912.64
14576	14	306-380-14-00	\$1,541.08	\$1,541.08
14576	15	306-380-15-00	\$2,036.50	\$2,036.50
14576	16	306-380-16-00	\$1,912.64	\$1,912.64
14576	17	306-380-17-00	\$1,912.64	\$1,912.64
14576	18	306-380-18-00	\$1,541.08	\$1,541.08
14576	19	306-380-19-00	\$1,912.64	\$1,912.64
14576	20	306-380-20-00	\$1,541.08	\$1,541.08
14576	21	306-380-21-00	\$2,036.50	\$2,036.50
14576	22	306-380-22-00	\$1,912.64	\$1,912.64
14576	71	306-380-23-00	\$2,036.50	\$2,036.50
14576	72	306-380-24-00	\$1,541.08	\$1,541.08
14576	73	306-380-25-00	\$1,726.86	\$1,726.86
14576	74	306-380-26-00	\$1,912.64	\$1,912.64
14576	75	306-380-27-00	\$1,541.08	\$1,541.08
14576	76	306-380-28-00	\$2,036.50	\$2,036.50
14576	77	306-380-29-00	\$2,036.50	\$2,036.50
14576	78	306-380-30-00	\$1,541.08	\$1,541.08
14576	79	306-380-31-00	\$1,912.64	\$1,912.64
14576	80	306-380-32-00	\$2,036.50	\$2,036.50
14576	81	306-380-33-00	\$1,726.86	\$1,726.86
14576	82	306-380-34-00	\$2,036.50	\$2,036.50
14576	83	306-380-35-00	\$1,726.86	\$1,726.86
14576	84	306-380-36-00	\$1,912.64	\$1,912.64
14576	85	306-380-37-00	\$2,036.50	\$2,036.50
14576	86	306-380-38-00	\$1,541.08	\$1,541.08
14576	87	306-380-39-00	\$1,912.64	\$1,912.64
14576	88	306-380-40-00	\$1,726.86	\$1,726.86
14576	89	306-380-41-00	\$2,036.50	\$2,036.50
14576	90	306-380-42-00	\$1,541.08	\$1,541.08

Poway Unified School District
Community Facilities District No. 10 Improvement Area C
Fiscal Year 2025/2026 Special Tax Roll

Tract	Lot	Assessor's Parcel Number	Maximum Special Tax	Assigned Special Tax
14576	91	306-380-43-00	\$1,912.64	\$1,912.64
14576	92	306-380-44-00	\$2,036.50	\$2,036.50
14576	93	306-380-45-00	\$0.00	\$0.00
14576	94	306-380-46-00	\$1,726.86	\$1,726.86
14576	95	306-380-47-00	\$1,541.08	\$1,541.08
14576	96	306-380-48-00	\$2,036.50	\$2,036.50
14576	97	306-380-49-00	\$1,912.64	\$1,912.64
14576	98	306-380-50-00	\$1,726.86	\$1,726.86
14576	99	306-380-51-00	\$1,541.08	\$1,541.08
14576	100	306-380-52-00	\$2,036.50	\$2,036.50
14576	101	306-380-53-00	\$1,912.64	\$1,912.64
14576	102	306-380-54-00	\$1,726.86	\$1,726.86
14576	103	306-380-55-00	\$1,912.64	\$1,912.64
14576	104	306-380-56-00	\$1,912.64	\$1,912.64
14576	105	306-380-57-00	\$1,541.08	\$1,541.08
14576	106	306-380-58-00	\$1,726.86	\$1,726.86
14576	107	306-380-59-00	\$2,036.50	\$2,036.50
14576	108	306-380-60-00	\$0.00	\$0.00
14576	B	306-380-61-00	\$0.00	\$0.00
14576	C	306-380-62-00	\$0.00	\$0.00
14576	G	306-380-63-00	\$0.00	\$0.00
14576	I	306-380-64-00	\$0.00	\$0.00
14576	O	306-380-65-00	\$0.00	\$0.00
14576	P	306-380-66-00	\$0.00	\$0.00
14576	Q	306-380-67-00	\$0.00	\$0.00
14576	R	306-380-68-00	\$0.00	\$0.00
14576	S	306-380-69-00	\$0.00	\$0.00
14576	T	306-380-70-00	\$0.00	\$0.00
14576	23	306-381-01-00	\$1,726.86	\$1,726.86
14576	24	306-381-02-00	\$1,541.08	\$1,541.08
14576	25	306-381-03-00	\$1,912.64	\$1,912.64
14576	26	306-381-04-00	\$2,036.50	\$2,036.50
14576	27	306-381-05-00	\$1,912.64	\$1,912.64
14576	28	306-381-06-00	\$2,036.50	\$2,036.50
14576	29	306-381-07-00	\$1,726.86	\$1,726.86
14576	30	306-381-08-00	\$1,726.86	\$1,726.86
14576	31	306-381-09-00	\$1,541.08	\$1,541.08
14576	32	306-381-10-00	\$2,036.50	\$2,036.50
14576	33	306-381-11-00	\$1,726.86	\$1,726.86
14576	34	306-381-12-00	\$1,726.86	\$1,726.86
14576	35	306-381-13-00	\$1,912.64	\$1,912.64
14576	36	306-381-14-00	\$1,912.64	\$1,912.64

Poway Unified School District
Community Facilities District No. 10 Improvement Area C
Fiscal Year 2025/2026 Special Tax Roll

Tract	Lot	Assessor's Parcel Number	Maximum Special Tax	Assigned Special Tax
14576	37	306-381-15-00	\$1,541.08	\$1,541.08
14576	38	306-381-16-00	\$1,726.86	\$1,726.86
14576	39	306-381-17-00	\$1,541.08	\$1,541.08
14576	40	306-381-18-00	\$1,726.86	\$1,726.86
14576	41	306-381-19-00	\$2,036.50	\$2,036.50
14576	42	306-381-20-00	\$1,541.08	\$1,541.08
14576	43	306-381-21-00	\$1,912.64	\$1,912.64
14576	44	306-381-22-00	\$2,036.50	\$2,036.50
14576	45	306-381-23-00	\$1,726.86	\$1,726.86
14576	46	306-381-24-00	\$1,541.08	\$1,541.08
14576	47	306-381-25-00	\$1,912.64	\$1,912.64
14576	48	306-381-26-00	\$1,726.86	\$1,726.86
14576	49	306-381-27-00	\$2,036.50	\$2,036.50
14576	50	306-381-28-00	\$1,541.08	\$1,541.08
14576	51	306-381-29-00	\$2,036.50	\$2,036.50
14576	52	306-381-30-00	\$2,036.50	\$2,036.50
14576	53	306-381-31-00	\$1,912.64	\$1,912.64
14576	54	306-381-32-00	\$1,541.08	\$1,541.08
14576	55	306-381-33-00	\$1,726.86	\$1,726.86
14576	56	306-381-34-00	\$1,541.08	\$1,541.08
14576	57	306-381-35-00	\$1,912.64	\$1,912.64
14576	58	306-381-36-00	\$2,036.50	\$2,036.50
14576	59	306-381-37-00	\$2,036.50	\$2,036.50
14576	60	306-381-38-00	\$1,726.86	\$1,726.86
14576	61	306-381-39-00	\$2,036.50	\$2,036.50
14576	62	306-381-40-00	\$1,541.08	\$1,541.08
14576	63	306-381-41-00	\$1,541.08	\$1,541.08
14576	64	306-381-42-00	\$2,036.50	\$2,036.50
14576	65	306-381-43-00	\$1,726.86	\$1,726.86
14576	66	306-381-44-00	\$2,036.50	\$2,036.50
14576	67	306-381-45-00	\$1,912.64	\$1,912.64
14576	68	306-381-46-00	\$1,726.86	\$1,726.86
14576	69	306-381-47-00	\$1,541.08	\$1,541.08
14576	70	306-381-48-00	\$1,912.64	\$1,912.64
14576	109	306-381-49-00	\$0.00	\$0.00
14576	A	306-381-50-00	\$0.00	\$0.00
14576	D	306-381-51-00	\$0.00	\$0.00
14576	E	306-381-52-00	\$0.00	\$0.00
14576	F	306-381-53-00	\$0.00	\$0.00
14576	H	306-381-54-00	\$0.00	\$0.00
14576	J	306-381-55-00	\$0.00	\$0.00
14576	K	306-381-56-00	\$0.00	\$0.00

Poway Unified School District
Community Facilities District No. 10 Improvement Area C
Fiscal Year 2025/2026 Special Tax Roll

Tract	Lot	Assessor's Parcel Number	Maximum Special Tax	Assigned Special Tax
14576	L	306-381-57-00	\$0.00	\$0.00
14576	M	306-381-58-00	\$0.00	\$0.00
14576	N	306-381-59-00	\$0.00	\$0.00
14576	U	306-381-60-00	\$0.00	\$0.00
14576	V	306-381-61-00	\$0.00	\$0.00
14599	2	306-400-02-00	\$0.00	\$0.00
14599	40	306-400-06-01	\$1,934.52	\$1,934.52
14599	41	306-400-06-02	\$2,380.40	\$2,380.40
14599	42	306-400-06-03	\$2,194.60	\$2,194.60
14599	43	306-400-06-04	\$2,194.60	\$2,194.60
14599	44	306-400-06-05	\$2,380.40	\$2,380.40
14599	45	306-400-06-06	\$1,934.52	\$1,934.52
14599	49	306-400-06-07	\$1,934.52	\$1,934.52
14599	50	306-400-06-08	\$2,380.40	\$2,380.40
14599	51	306-400-06-09	\$2,194.60	\$2,194.60
14599	52	306-400-06-10	\$2,194.60	\$2,194.60
14599	53	306-400-06-11	\$2,380.40	\$2,380.40
14599	54	306-400-06-12	\$1,934.52	\$1,934.52
14599	55	306-400-06-13	\$1,934.52	\$1,934.52
14599	56	306-400-06-14	\$2,380.40	\$2,380.40
14599	57	306-400-06-15	\$2,194.60	\$2,194.60
14599	58	306-400-06-16	\$2,194.60	\$2,194.60
14599	59	306-400-06-17	\$2,380.40	\$2,380.40
14599	60	306-400-06-18	\$1,934.52	\$1,934.52
14599	34	306-400-07-01	\$1,934.52	\$1,934.52
14599	35	306-400-07-02	\$2,380.40	\$2,380.40
14599	36	306-400-07-03	\$2,194.60	\$2,194.60
14599	37	306-400-07-04	\$2,194.60	\$2,194.60
14599	38	306-400-07-05	\$2,380.40	\$2,380.40
14599	39	306-400-07-06	\$1,934.52	\$1,934.52
14599	61	306-400-07-07	\$1,934.52	\$1,934.52
14599	62	306-400-07-08	\$2,380.40	\$2,380.40
14599	63	306-400-07-09	\$2,194.60	\$2,194.60
14599	64	306-400-07-10	\$2,194.60	\$2,194.60
14599	65	306-400-07-11	\$2,380.40	\$2,380.40
14599	66	306-400-07-12	\$1,934.52	\$1,934.52
14599	31	306-400-08-01	\$2,194.60	\$2,194.60
14599	32	306-400-08-02	\$2,380.40	\$2,380.40
14599	33	306-400-08-03	\$1,934.52	\$1,934.52
14599	67	306-400-08-04	\$1,934.52	\$1,934.52
14599	68	306-400-08-05	\$2,380.40	\$2,380.40
14599	69	306-400-08-06	\$2,194.60	\$2,194.60

Poway Unified School District
Community Facilities District No. 10 Improvement Area C
Fiscal Year 2025/2026 Special Tax Roll

Tract	Lot	Assessor's Parcel Number	Maximum Special Tax	Assigned Special Tax
14599	70	306-400-08-07	\$2,194.60	\$2,194.60
14599	71	306-400-08-08	\$2,380.40	\$2,380.40
14599	72	306-400-08-09	\$1,934.52	\$1,934.52
14599	19	306-400-09-01	\$1,934.52	\$1,934.52
14599	20	306-400-09-02	\$2,380.40	\$2,380.40
14599	21	306-400-09-03	\$2,194.60	\$2,194.60
14599	22	306-400-09-04	\$2,194.60	\$2,194.60
14599	23	306-400-09-05	\$2,380.40	\$2,380.40
14599	24	306-400-09-06	\$1,934.52	\$1,934.52
14599	25	306-400-09-07	\$1,934.52	\$1,934.52
14599	26	306-400-09-08	\$2,380.40	\$2,380.40
14599	27	306-400-09-09	\$2,194.60	\$2,194.60
14599	28	306-400-09-10	\$2,194.60	\$2,194.60
14599	29	306-400-09-11	\$2,380.40	\$2,380.40
14599	30	306-400-09-12	\$1,934.52	\$1,934.52
14599	73	306-400-10-01	\$1,934.52	\$1,934.52
14599	74	306-400-10-02	\$2,380.40	\$2,380.40
14599	75	306-400-10-03	\$2,194.60	\$2,194.60
14599	76	306-400-10-04	\$2,194.60	\$2,194.60
14599	77	306-400-10-05	\$2,380.40	\$2,380.40
14599	78	306-400-10-06	\$0.00	\$0.00
14599	79	306-400-10-07	\$0.00	\$0.00
14599	80	306-400-10-08	\$2,380.40	\$2,380.40
14599	81	306-400-10-09	\$2,194.60	\$2,194.60
14599	82	306-400-10-10	\$2,194.60	\$2,194.60
14599	83	306-400-10-11	\$2,380.40	\$2,380.40
14599	84	306-400-10-12	\$1,934.52	\$1,934.52
14599	1	306-400-11-01	\$1,934.52	\$1,934.52
14599	2	306-400-11-02	\$2,380.40	\$2,380.40
14599	3	306-400-11-03	\$2,194.60	\$2,194.60
14599	4	306-400-11-04	\$2,194.60	\$2,194.60
14599	5	306-400-11-05	\$2,380.40	\$2,380.40
14599	6	306-400-11-06	\$1,934.52	\$1,934.52
14599	7	306-400-11-07	\$0.00	\$0.00
14599	8	306-400-11-08	\$2,380.40	\$2,380.40
14599	9	306-400-11-09	\$2,194.60	\$2,194.60
14599	10	306-400-11-10	\$2,194.60	\$2,194.60
14599	11	306-400-11-11	\$2,380.40	\$2,380.40
14599	12	306-400-11-12	\$1,934.52	\$1,934.52
14599	13	306-400-11-13	\$1,934.52	\$1,934.52
14599	14	306-400-11-14	\$2,380.40	\$2,380.40
14599	15	306-400-11-15	\$2,194.60	\$2,194.60

Poway Unified School District
Community Facilities District No. 10 Improvement Area C
Fiscal Year 2025/2026 Special Tax Roll

Tract	Lot	Assessor's Parcel Number	Maximum Special Tax	Assigned Special Tax
14599	16	306-400-11-16	\$2,194.60	\$2,194.60
14599	17	306-400-11-17	\$2,380.40	\$2,380.40
14599	18	306-400-11-18	\$1,934.52	\$1,934.52
14599	46	306-400-12-01	\$1,934.52	\$1,934.52
14599	47	306-400-12-02	\$2,380.40	\$2,380.40
14599	48	306-400-12-03	\$2,194.60	\$2,194.60

Total Parcels	216
Total Taxable Parcels	187
Total Assigned Special Tax	\$368,675.50